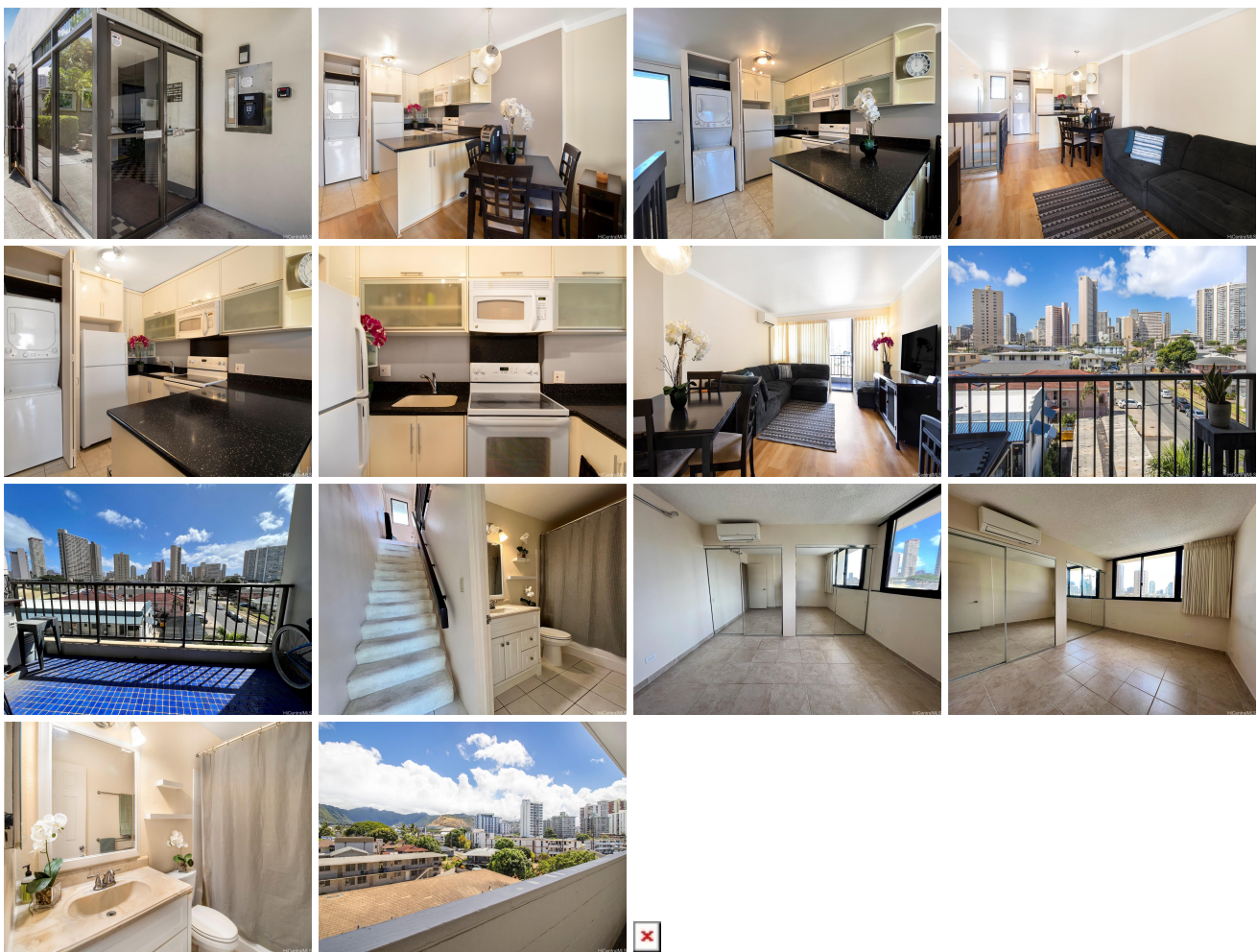


Hausten 739 Hausten Street Unit 501, Honolulu 96826 * Hausten * \$399,000

Beds: 1	MLS#: 202408183, FS	Year Built: 1975
Bath: 1/0	Status: Active Under Contract	Remodeled:
Living Sq. Ft.: 615	List Date & DOM: 04-12-2024 & 68	Total Parking: 1
Land Sq. Ft.: 0	Condition: Excellent	Assessed Value
Lanai Sq. Ft.: 63	Frontage:	Building: \$360,200
Sq. Ft. Other: 0	Tax/Year: \$93/2023	Land: \$31,900
Total Sq. Ft. 678	Neighborhood: Moiliili	Total: \$392,100
Maint./Assoc. \$781 / \$0	Flood Zone : Zone X - Tool	Stories / CPR: 8-14 / No
Parking: Assigned, Covered - 1, Compact	Frontage:	
Zoning : 12 - A-2 Medium Density Apartme	View: City, Mountain, Sunset	

Public Remarks: A great opportunity to own a wonderful unit in the heart of Moiliili! This one bedroom, split level unit has a spacious living area, open concept kitchen and includes split air conditioning units, a washer/dryer and covered patio! You'll appreciate the natural breeze that flows throughout this split level unit along with the amazing city and mountain views that it has to offer! Enjoy the conveniences of being near shopping, restaurants, UH-Manoa, freeways and public transportation!
Sale Conditions: None **Schools:** , , * [Request Showing](#), [Photos](#), [History](#), [Maps](#), [Deed](#), [Watch List](#), [Tax Info](#)



Address	Price	Bd & Bth	Living / Avg.	Land Avg.	Lanai	Occ.	FL	DOM
739 Hausten Street 501	\$399,000	1 & 1/0	615 \$649	0 inf	63	56%	5	68

Address	Tax Maint. Ass.	Assessed Land	Assessed Building	Assessed Total	Ratio	Year & Remodeled
739 Hausten Street 501	\$93 \$781 \$0	\$31,900	\$360,200	\$392,100	102%	1975 & NA

[739 Hausten Street 501](#) - MLS#: [202408183](#) - A great opportunity to own a wonderful unit in the heart of Moiliili! This one bedroom, split level unit has a spacious living area, open concept kitchen and includes split air conditioning units, a washer/dryer and covered patio! You'll appreciate the natural breeze that flows throughout this split level unit along with the amazing city and mountain views that it has to offer! Enjoy the conveniences of being near shopping, restaurants, UH-Manoa, freeways and public transportation! **Region:** Metro **Neighborhood:** Moiliili **Condition:** Excellent **Parking:** Assigned, Covered - 1, Compact **Total Parking:** 1 **View:** City, Mountain, Sunset **Frontage:** **Pool:** **Zoning:** 12 - A-2 Medium Density Apartme **Sale Conditions:** None **Schools:** , , * [Request Showing](#), [Photos](#), [History](#), [Maps](#), [Deed](#), [Watch List](#), [Tax Info](#)

DOM = Days on Market, Occ. = Occupancy, FL = Floor Number