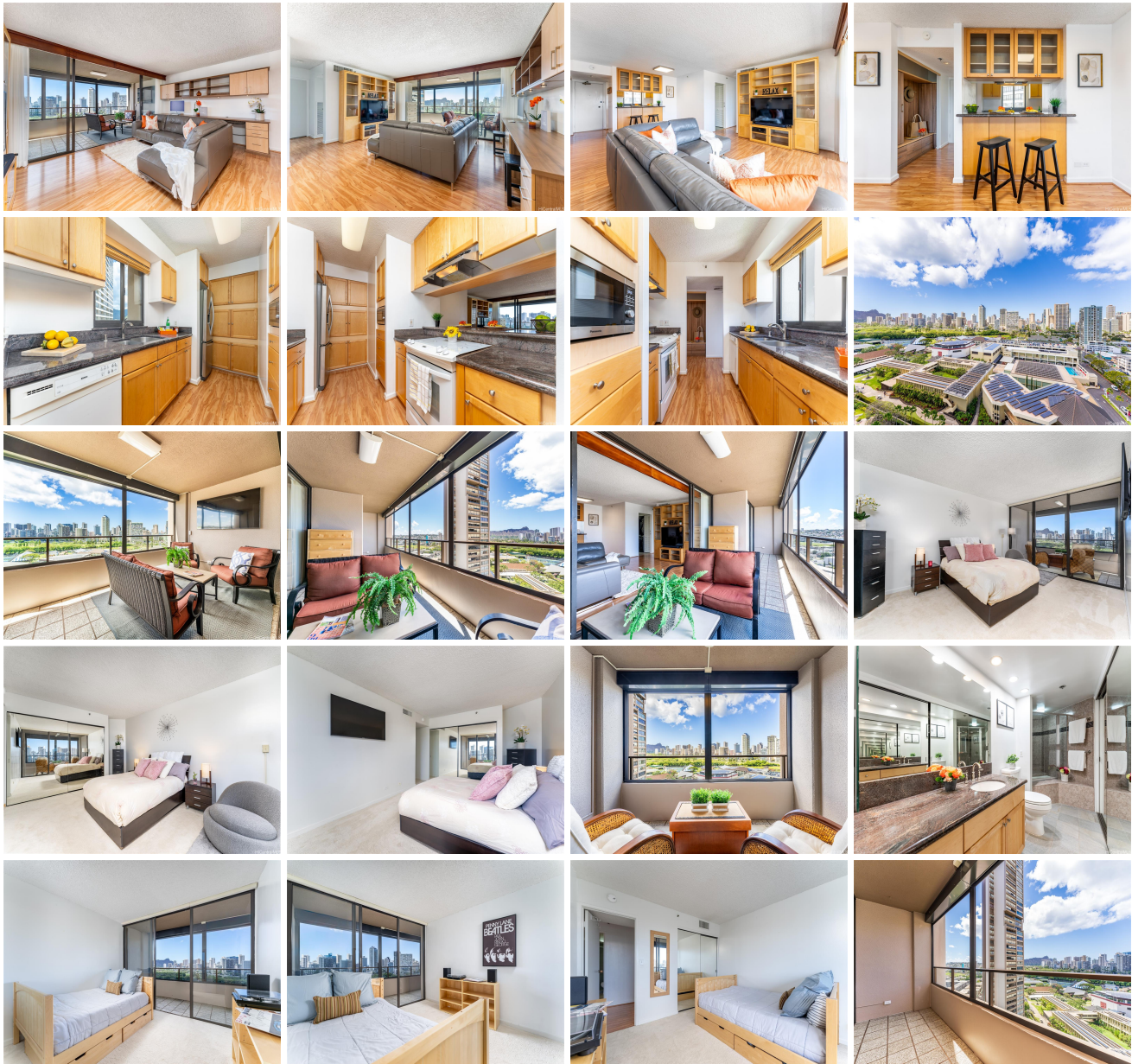


Royal Iolani 581 Kamoku Street Unit 1702, Honolulu 96826 * \$749,000

Beds: 2	MLS#: 202408281, FS	Year Built: 1978
Bath: 2/0	Status: Active Under Contract	Remodeled:
Living Sq. Ft.: 1,147	List Date & DOM: 04-19-2024 & 35	Total Parking: 1
Land Sq. Ft.: 0	Condition: Excellent, Above Average	Assessed Value
Lanai Sq. Ft.: 318	Frontage:	Building: \$618,500
Sq. Ft. Other: 0	Tax/Year: \$160/2024	Land: \$86,900
Total Sq. Ft. 1,465	Neighborhood: Kapiolani	Total: \$705,400
Maint./Assoc. \$1,729 / \$0	Flood Zone : Zone AE,Zo - Tool	Stories / CPR: 21+ / No
Parking: Assigned, Covered - 1, Garage	Frontage:	
Zoning : 13 - A-3 High Density Apartment	View: City, Diamond Head, Golf Course, Marina/Canal, Mountain	

Public Remarks: HIGHLY DESIRED & RARELY AVAILABLE this 2bd/2ba unit, in the EWA tower is waiting for you! This URBAN LIVING home w/upgraded kitchen/baths has INCREDIBLE DIAMOND HEAD, WAIKIKI & a piece of OCN views. Enjoy a leisurely breakfast or dinner on your HUGE 318sf lanai w/unobstructed views! This SPECIAL unit has a lanai fronting each room & the primary bedroom has a SEPARATE PRIVATE LANAI. Highlights include CORNER END, breezy unit w/beautiful laminate flooring, plush carpets, CENTRAL AC, natural light, LARGE CLOSETS, EV charging stations, motorized lanai shades & pet friendly. **Sale Conditions:** None **Schools:** [Ala Wai](#), [Washington](#), [Kaimuki](#) * [Request Showing](#), [Photos](#), [History](#), [Maps](#), [Deed](#), [Watch List](#), [Tax Info](#)





Address	Price	Bd & Bth	Living / Avg.	Land Avg.	DOM
581 Kamoku Street 1702	\$749,000	2 & 2/0	1,147 \$653	0 \$inf	35

Address	Tax Maint. Ass.	Assessed Land	Assessed Building	Assessed Total	Ratio	Year & Remodeled
581 Kamoku Street 1702	\$160 \$1,729 \$0	\$86,900	\$618,500	\$705,400	106%	1978 & NA

[581 Kamoku Street 1702](#) - MLS#: [202408281](#) - HIGHLY DESIRED & RARELY AVAILABLE this 2bd/2ba unit, in the EWA tower is waiting for you! This URBAN LIVING home w/upgraded kitchen/baths has INCREDIBLE DIAMOND HEAD, WAIKIKI & a piece of OCN views. Enjoy a leisurely breakfast or dinner on your HUGE 318sf lanai w/unobstructed views! This SPECIAL unit has a lanai fronting each room & the primary bedroom has a SEPARATE PRIVATE LANAI. Highlights include CORNER END, breezy unit w/beautiful laminate flooring, plush carpets, CENTRAL AC, natural light, LARGE CLOSETS, EV charging stations, motorized lanai shades & pet friendly. **Region:** Metro **Neighborhood:** Kapiolani **Condition:** Excellent, Above Average **Parking:** Assigned, Covered - 1, Garage **Total Parking:** 1 **View:** City, Diamond Head, Golf Course, Marina/Canal, Mountain **Frontage:** Pool: **Zoning:** 13 - A-3 High Density Apartment **Sale Conditions:** None **Schools:** [Ala Wai](#), [Washington](#), [Kaimuki](#)
 * [Request Showing](#), [Photos](#), [History](#), [Maps](#), [Deed](#), [Watch List](#), [Tax Info](#)

DOM = Days on Market