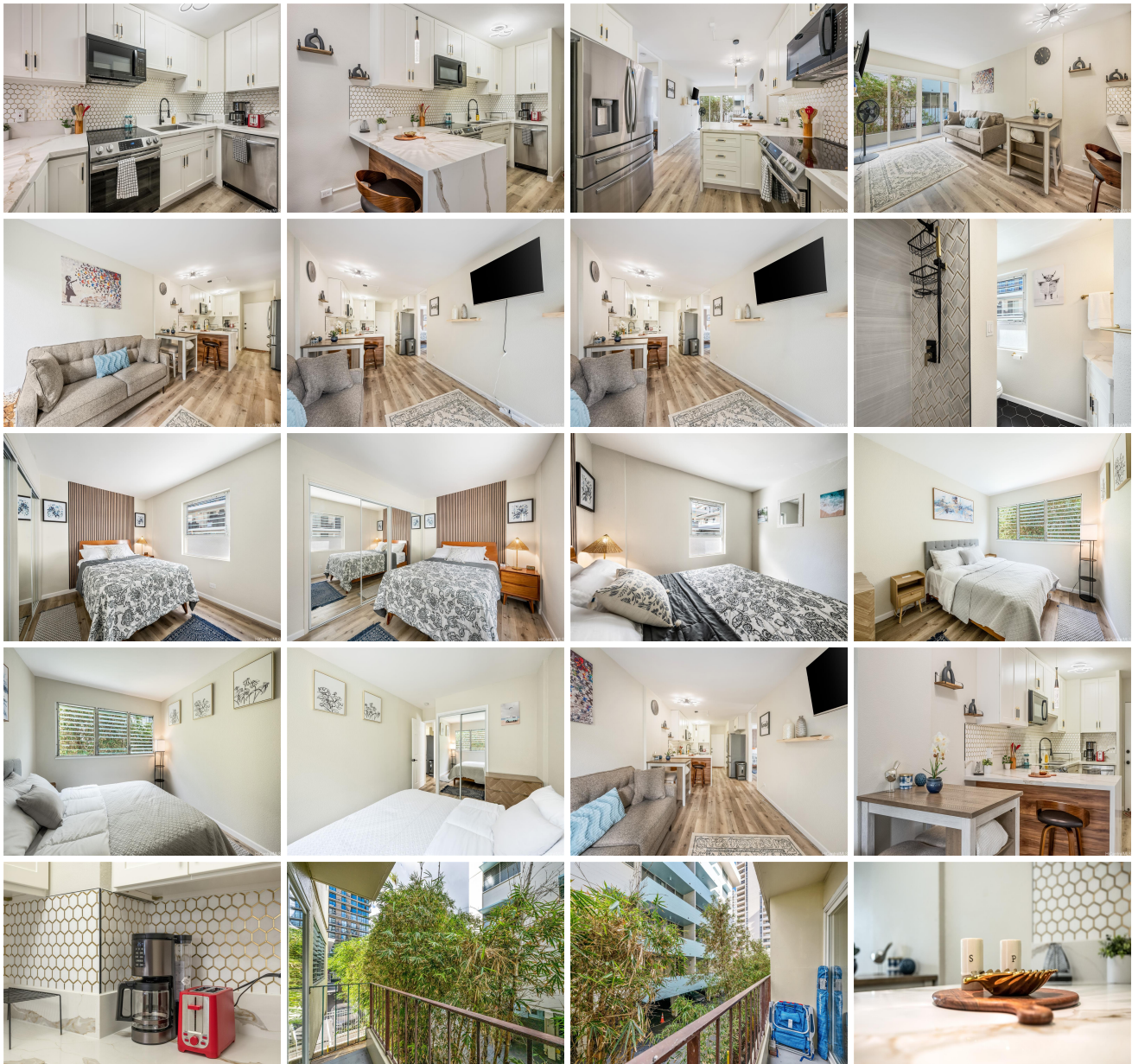


222 Kaiulani Apts 222 Kaiulani Avenue Unit 208, Honolulu 96815 * 222 Kaiulani Apts *

\$473,888 * Originally \$478,000

Beds: 2	MLS#: 202408285, FS	Year Built: 1979
Bath: 1/0	Status: Active	Remodeled: 2024
Living Sq. Ft.: 630	List Date & DOM: 04-15-2024 & 76	Total Parking: 1
Land Sq. Ft.: 30,274	Condition: Excellent	Assessed Value
Lanai Sq. Ft.: 0	Frontage: Other	Building: \$495,300
Sq. Ft. Other: 0	Tax/Year: \$110/2023	Land: \$51,600
Total Sq. Ft. 630	Neighborhood: Waikiki	Total: \$546,900
Maint./Assoc. \$862 / \$0	Flood Zone: Zone AO - Tool	Stories / CPR: One / No
Parking: Assigned, Covered - 1	Frontage: Other	
Zoning: X2 - Apartment Precinct	View: None	

Public Remarks: Stunning 2-Bedroom Condo in Prime Waikiki Location! Welcome to 222 Kaiulani 208, a beautifully appointed 2-bedroom, 1-bathroom condo ideally situated in the heart of Waikiki. This modern residence offers: Open-concept living space with city views from the private lanai. Well-equipped kitchen with modern appliances. Primary suite with a luxurious en-suite bathroom. Guest bedroom and additional full bathroom. Convenient amenities including high-speed Wi-Fi and smart TVs. Enjoy access to fantastic building amenities. Just steps away from Waikiki Beach, this location is perfect for enjoying sun, sand, and surf. Explore nearby attractions including Diamond Head and world-renowned dining and shopping along Kalakaua Avenue. Don't miss this opportunity to own a piece of paradise in Honolulu. Schedule your showing today!" \$7,000 Credit to Buyer! **Sale Conditions:** None **Schools:** , , * [Request Showing](#), [Photos](#), [History](#), [Maps](#), [Deed](#), [Watch List](#), [Tax Info](#)





Address	Price	Bd & Bth	Living / Avg.	Land Avg.	Lanai	Occ.	FL	DOM
222 Kaiulani Avenue 208	\$473,888	2 & 1/0	630 \$752	30,274 \$16	0	33%	2	76

Address	Tax Maint. Ass.	Assessed Land	Assessed Building	Assessed Total	Ratio	Year & Remodeled
222 Kaiulani Avenue 208	\$110 \$862 \$0	\$51,600	\$495,300	\$546,900	87%	1979 & 2024

[222 Kaiulani Avenue 208](#) - MLS#: [202408285](#) - Original price was \$478,000 - Stunning 2-Bedroom Condo in Prime Waikiki Location! Welcome to 222 Kaiulani 208, a beautifully appointed 2-bedroom, 1-bathroom condo ideally situated in the heart of Waikiki. This modern residence offers: Open-concept living space with city views from the private lanai. Well-equipped kitchen with modern appliances. Primary suite with a luxurious en-suite bathroom. Guest bedroom and additional full bathroom. Convenient amenities including high-speed Wi-Fi and smart TVs. Enjoy access to fantastic building amenities. Just steps away from Waikiki Beach, this location is perfect for enjoying sun, sand, and surf. Explore nearby attractions including Diamond Head and world-renowned dining and shopping along Kalakaua Avenue. Don't miss this opportunity to own a piece of paradise in Honolulu. Schedule your showing today!" \$7,000 Credit to Buyer! **Region:** Metro **Neighborhood:** Waikiki **Condition:** Excellent **Parking:** Assigned, Covered - 1 **Total Parking:** 1 **View:** None **Frontage:** Other **Pool:** **Zoning:** X2 - Apartment Precinct **Sale Conditions:** None **Schools:** , , * [Request Showing](#), [Photos](#), [History](#), [Maps](#), [Deed](#), [Watch List](#), [Tax Info](#)

DOM = Days on Market, Occ. = Occupancy, FL = Floor Number