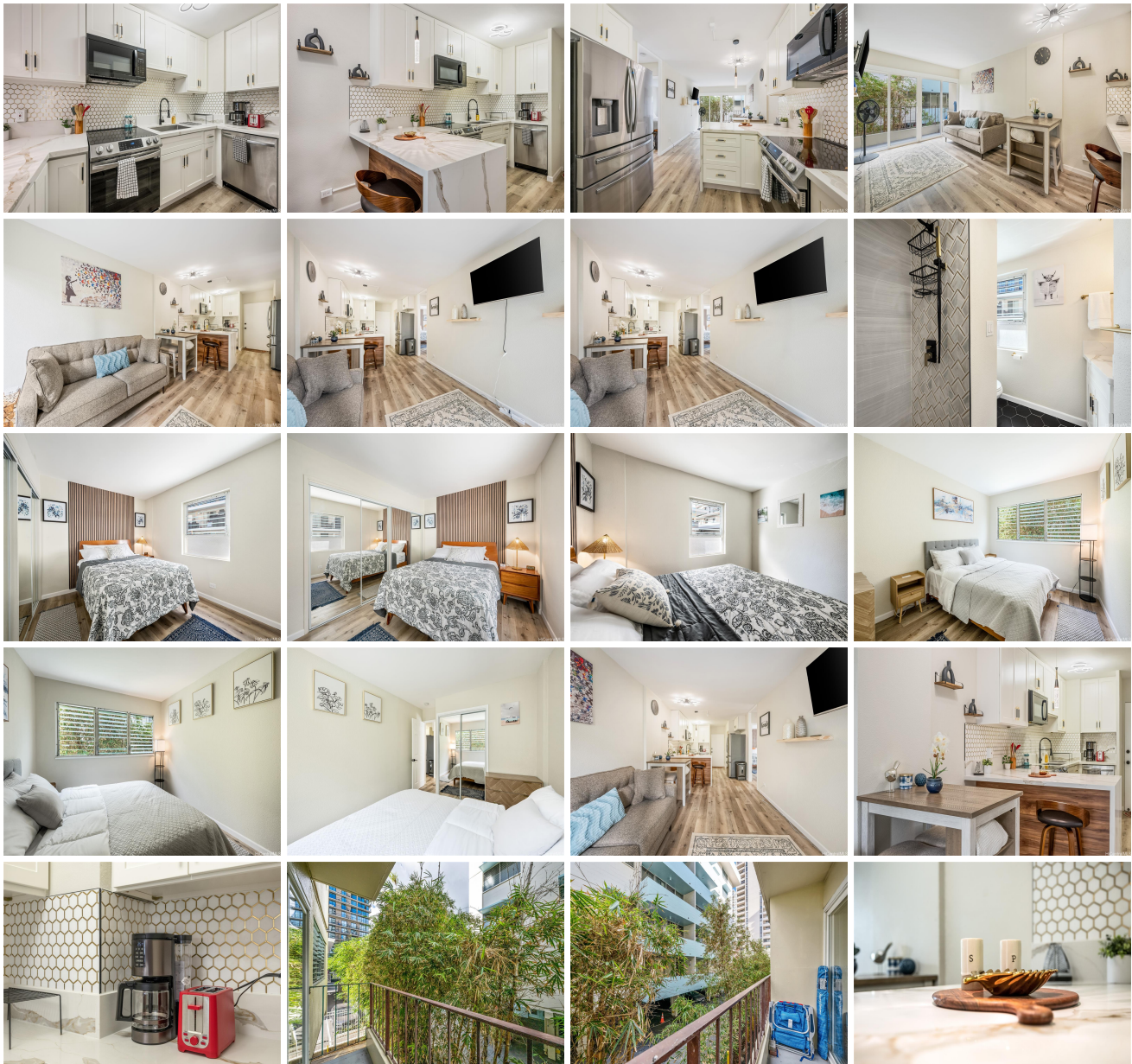


222 Kaiulani Apts 222 Kaiulani Avenue Unit 208, Honolulu 96815 * \$473,888 * Originally

\$478,000

Beds: 2 Bath: 1/0 Living Sq. Ft.: 630 Land Sq. Ft.: 30,274 Lanai Sq. Ft.: 0 Sq. Ft. Other: 0 Total Sq. Ft. 630 Maint./Assoc. \$862 / \$0 Parking: Assigned, Covered - 1 Zoning: X2 - Apartment Precinct	MLS#: 202408285, FS Status: Active List Date & DOM: 04-15-2024 & 76 Condition: Excellent Frontage: Other Tax/Year: \$110/2023 Neighborhood: Waikiki Flood Zone: Zone AO - Tool	Year Built: 1979 Remodeled: 2024 Total Parking: 1 Assessed Value Building: \$495,300 Land: \$51,600 Total: \$546,900 Stories / CPR: One / No Frontage: Other View: None
--	---	---

Public Remarks: Stunning 2-Bedroom Condo in Prime Waikiki Location! Welcome to 222 Kaiulani 208, a beautifully appointed 2-bedroom, 1-bathroom condo ideally situated in the heart of Waikiki. This modern residence offers: Open-concept living space with city views from the private lanai. Well-equipped kitchen with modern appliances. Primary suite with a luxurious en-suite bathroom. Guest bedroom and additional full bathroom. Convenient amenities including high-speed Wi-Fi and smart TVs. Enjoy access to fantastic building amenities. Just steps away from Waikiki Beach, this location is perfect for enjoying sun, sand, and surf. Explore nearby attractions including Diamond Head and world-renowned dining and shopping along Kalakaua Avenue. Don't miss this opportunity to own a piece of paradise in Honolulu. Schedule your showing today!" \$7,000 Credit to Buyer! **Sale Conditions:** None **Schools:** , , * [Request Showing](#), [Photos](#), [History](#), [Maps](#), [Deed](#), [Watch List](#), [Tax Info](#)





Address	Price	Bd & Bth	Living / Avg.	Land Avg.	DOM
222 Kaiulani Avenue 208	\$473,888	2 & 1/0	630 \$752	30,274 \$16	76

Address	Tax Maint. Ass.	Assessed Land	Assessed Building	Assessed Total	Ratio	Year & Remodeled
222 Kaiulani Avenue 208	\$110 \$862 \$0	\$51,600	\$495,300	\$546,900	87%	1979 & 2024

[222 Kaiulani Avenue 208](#) - MLS#: [202408285](#) - Original price was \$478,000 - Stunning 2-Bedroom Condo in Prime Waikiki Location! Welcome to 222 Kaiulani 208, a beautifully appointed 2-bedroom, 1-bathroom condo ideally situated in the heart of Waikiki. This modern residence offers: Open-concept living space with city views from the private lanai. Well-equipped kitchen with modern appliances. Primary suite with a luxurious en-suite bathroom. Guest bedroom and additional full bathroom. Convenient amenities including high-speed Wi-Fi and smart TVs. Enjoy access to fantastic building amenities. Just steps away from Waikiki Beach, this location is perfect for enjoying sun, sand, and surf. Explore nearby attractions including Diamond Head and world-renowned dining and shopping along Kalakaua Avenue. Don't miss this opportunity to own a piece of paradise in Honolulu. Schedule your showing today!" \$7,000 Credit to Buyer! **Region:** Metro **Neighborhood:** Waikiki **Condition:** Excellent **Parking:** Assigned, Covered - 1 **Total Parking:** 1 **View:** None **Frontage:** Other **Pool:** **Zoning:** X2 - Apartment Precinct **Sale Conditions:** None **Schools:** , , * [Request Showing](#), [Photos](#), [History](#), [Maps](#), [Deed](#), [Watch List](#), [Tax Info](#)

DOM = Days on Market