

Hawaiki Tower 88 Piikoi Street Unit 2709, Honolulu 96814 * \$1,700,000 * Originally

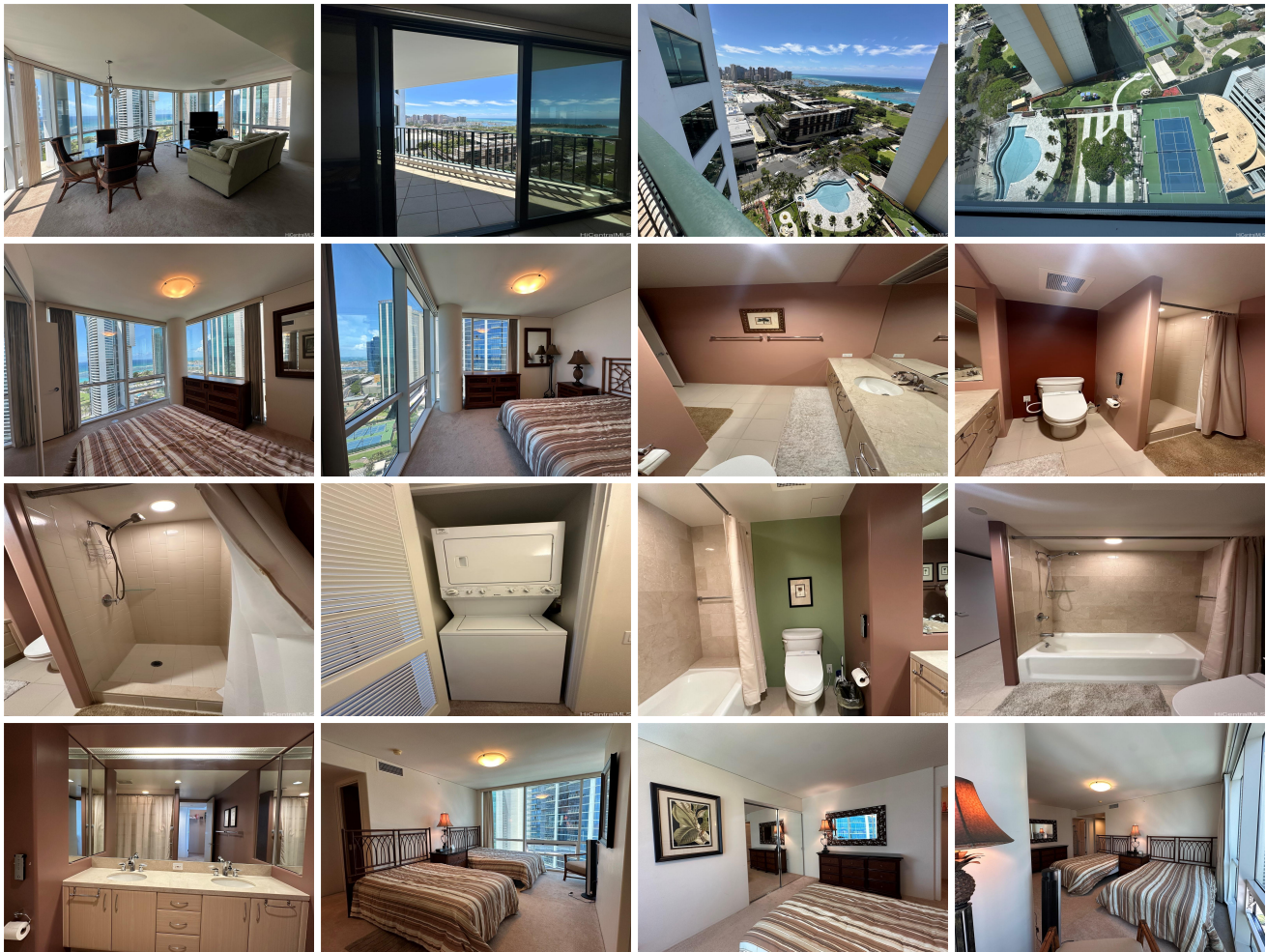
\$1,800,000

Beds: 2	MLS#: 202408300, FS	Year Built: 1999
Bath: 2/0	Status: Active	Remodeled:
Living Sq. Ft.: 1,413	List Date & DOM: 04-17-2024 & 89	Total Parking: 2
Land Sq. Ft.: 267,981	Condition: Above Average	Assessed Value
Lanai Sq. Ft.: 55	Frontage: Other	Building: \$1,214,500
Sq. Ft. Other: 0	Tax/Year: \$613/2023	Land: \$79,400
Total Sq. Ft. 1,468	Neighborhood: Kakaako	Total: \$1,293,900
Maint./Assoc. \$1,247 / \$0	Flood Zone: Zone AE - Tool	Stories / CPR: 21+ / No
Parking: Assigned, Covered - 2, Secured Entry	Frontage: Other	

Zoning: **Kak - Kakaako Community Development Project**

View: **City, Coastline, Diamond Head, Marina/Canal, Mountain, Ocean, Sunrise, Sunset**

Public Remarks: Location! Location! Location! Highly coveted end unit with breathtaking ocean views! Enjoy the beauty and splendor of Honolulu from sunrise to sunset with sweeping views of Diamond Head, Magic Island and Ala Moana beach park. Steps from Ala Moana Shopping Center and Foodland Farms, multiple restaurants and minutes from Kakaako, Honolulu Academy of Arts and The Neal Blaisdell Concert Hall this unit is in a prime location in the hub of Honolulu. Walking distance to Ala Moana Beach Park buyer can enjoy beach life without having to worry about traffic or parking. Amenities include newly renovated pool, multiple BBQ areas, tennis court/pickle ball, putting green, playground, fitness area, and beautifully landscaped walking paths. Master bedroom features en suite bath and walk-in closet as well as a sliding door second closet. Unit has 2 covered/assigned parking stalls with multiple storage areas. Priced to allow buyer to add their own decorative touch, unit has not been renovated. The sale is based on "AS IS" condition. **Sale Conditions:** None **Schools:** , , * [Request Showing, Photos, History, Maps, Deed, Watch List, Tax Info](#)





Address	Price	Bd & Bth	Living / Avg.	Land Avg.	DOM
88 Piikoi Street 2709	\$1,700,000	2 & 2/0	1,413 \$1,203	267,981 \$6	89

Address	Tax Maint. Ass.	Assessed Land	Assessed Building	Assessed Total	Ratio	Year & Remodeled
88 Piikoi Street 2709	\$613 \$1,247 \$0	\$79,400	\$1,214,500	\$1,293,900	131%	1999 & NA

[88 Piikoi Street 2709](#) - MLS#: [202408300](#) - Original price was \$1,800,000 - Location! Location! Location! Highly coveted end unit with breathtaking ocean views! Enjoy the beauty and splendor of Honolulu from sunrise to sunset with sweeping views of Diamond Head, Magic Island and Ala Moana beach park. Steps from Ala Moana Shopping Center and Foodland Farms, multiple restaurants and minutes from Kakaako, Honolulu Academy of Arts and The Neal Blaisdell Concert Hall this unit is in a prime location in the hub of Honolulu. Walking distance to Ala Moana Beach Park buyer can enjoy beach life without having to worry about traffic or parking. Amenities include newly renovated pool, multiple BBQ areas, tennis court/pickle ball, putting green, playground, fitness area, and beautifully landscaped walking paths. Master bedroom features en suite bath and walk-in closet as well as a sliding door second closet. Unit has 2 covered/assigned parking stalls with multiple storage areas. Priced to allow buyer to add their own decorative touch, unit has not been renovated. The sale is based on "AS IS" condition. **Region:** Metro **Neighborhood:** Kakaako **Condition:** Above Average **Parking:** Assigned, Covered - 2, Secured Entry **Total Parking:** 2 **View:** City, Coastline, Diamond Head, Marina/Canal, Mountain, Ocean, Sunrise, Sunset **Frontage:** Other **Pool:** **Zoning:** Kak - Kakaako Community Development Project **Sale Conditions:** None **Schools:** , , * [Request Showing](#), [Photos](#), [History](#), [Maps](#), [Deed](#), [Watch List](#), [Tax Info](#)

DOM = Days on Market