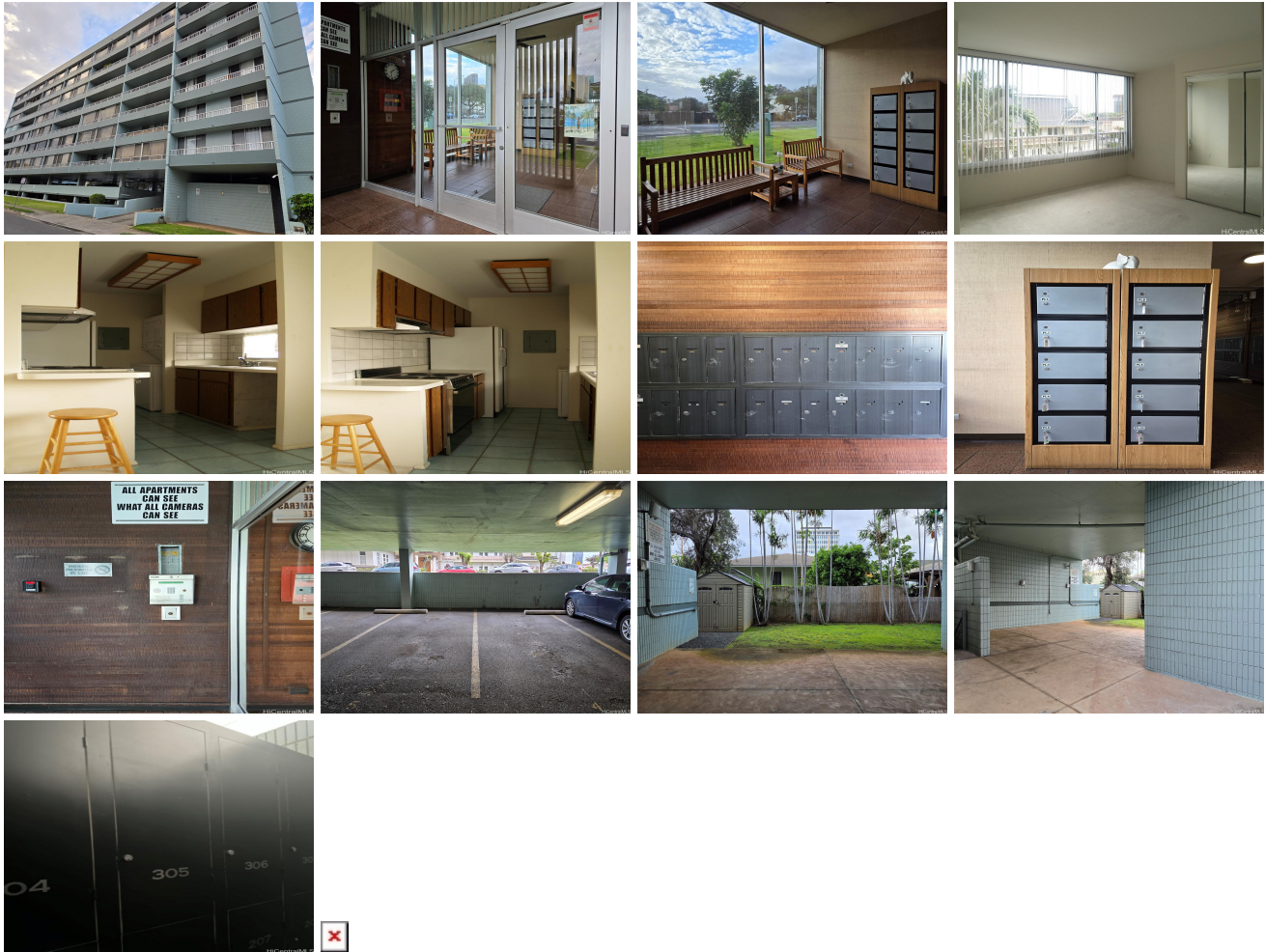


ELMS 1122 Elm Street Unit 305, Honolulu 96814 * \$428,000

Beds: 1	MLS#: 202408421, FS	Year Built: 1979
Bath: 1/0	Status: Active Under Contract	Remodeled:
Living Sq. Ft.: 646	List Date & DOM: 04-17-2024 & 45	Total Parking: 1
Land Sq. Ft.: 21,736	Condition: Average	Assessed Value
Lanai Sq. Ft.: 0	Frontage:	Building: \$291,400
Sq. Ft. Other: 0	Tax/Year: \$111/2023	Land: \$87,000
Total Sq. Ft. 646	Neighborhood: Kakaako	Total: \$378,400
Maint./Assoc. \$566 / \$0	Flood Zone : Zone X - Tool	Stories / CPR: 8-14 / No
Parking: Covered - 1	Frontage:	
Zoning : 12 - A-2 Medium Density Apartme	View: City, Mountain	

Public Remarks: Don't miss out on this jewel of a unit in a rarely available but highly coveted condominium in the heart of the Honolulu-Kakaako area. Enjoy the close proximity to shopping, dining, and entertainment, as well as schools and bus transportation if needed. This unit includes 1 bedroom, a separate den/office, washer/dryer in unit, 1 assigned-covered parking stall, and a storage unit. Wonderful cross-breeze thanks to the tradewinds from mauka to makai, with views of the mountain and city. The large windows throughout the unit also welcome plenty of light. Building is pet-friendly, secure, and well-maintained yet boasts a low maintenance fee. Currently tenant-occupied with lease ending in November 2024 or possibly sooner. *Photos of unit were taken prior to current rental. **Sale Conditions:** None **Schools:** [Kaahumanu](#), [Stevenson](#), [Mckinley](#) * [Request Showing](#), [Photos](#), [History](#), [Maps](#), [Deed](#), [Watch List](#), [Tax Info](#)



Address	Price	Bd & Bth	Living / Avg.	Land Avg.	DOM
1122 Elm Street 305	\$428,000	1 & 1/0	646 \$663	21,736 \$20	45

Address	Tax Maint. Ass.	Assessed Land	Assessed Building	Assessed Total	Ratio	Year & Remodeled
1122 Elm Street 305	\$111 \$566 \$0	\$87,000	\$291,400	\$378,400	113%	1979 & NA

[1122 Elm Street 305](#) - MLS#: [202408421](#) - Don't miss out on this jewel of a unit in a rarely available but highly coveted condominium in the heart of the Honolulu-Kakaako area. Enjoy the close proximity to shopping, dining, and entertainment, as well as schools and bus transportation if needed. This unit includes 1 bedroom, a separate den/office, washer/dryer in unit, 1 assigned-covered parking stall, and a storage unit. Wonderful cross-breeze thanks to the tradewinds from mauka to makai, with views of the mountain and city. The large windows throughout the unit also welcome plenty of light. Building is pet-friendly, secure, and well-maintained yet boasts a low maintenance fee. Currently tenant-occupied with lease ending in November 2024 or possibly sooner. *Photos of unit were taken prior to current rental. **Region:** Metro **Neighborhood:** Kakaako **Condition:** Average **Parking:** Covered - 1 **Total Parking:** 1 **View:** City, Mountain **Frontage:** Pool: **Zoning:** 12 - A-2 Medium Density Apartme **Sale Conditions:** None **Schools:** [Kaahumanu](#), [Stevenson](#), [Mckinley](#) * [Request Showing](#), [Photos](#), [History](#), [Maps](#), [Deed](#), [Watch List](#), [Tax Info](#)

DOM = Days on Market