

Royal Kuhio 2240 Kuhio Avenue Unit 3203, Honolulu 96815 * Royal Kuhio * \$1,229,000

Beds: **2**
 Bath: **2/0**
 Living Sq. Ft.: **1,043**
 Land Sq. Ft.: **46,783**
 Lanai Sq. Ft.: **231**
 Sq. Ft. Other: **0**
 Total Sq. Ft. **1,274**
 Maint./Assoc. **\$2,052 / \$0**
 Parking: **Assigned, Covered - 2**

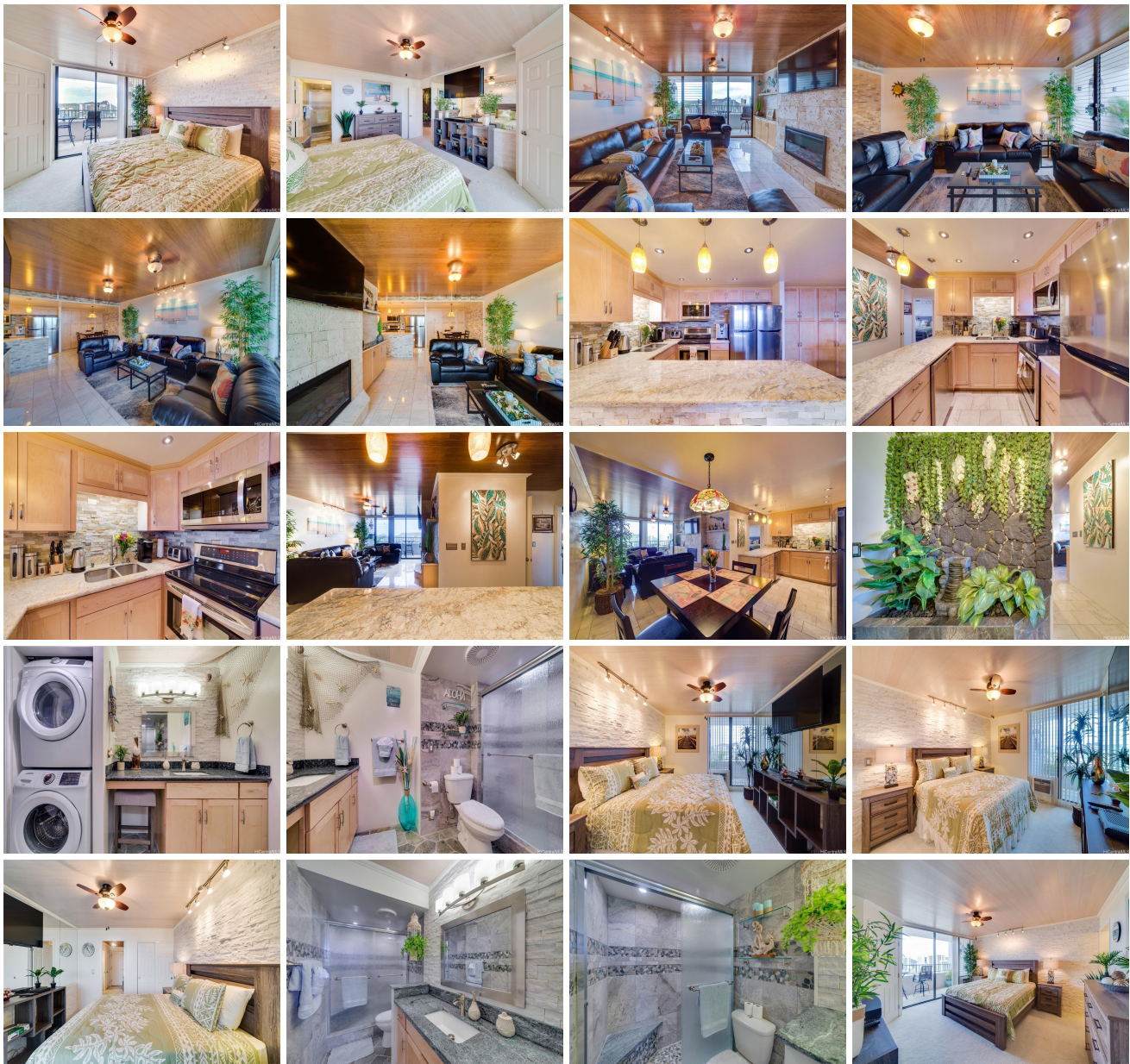
MLS#: **202408423, FS**
 Status: **Active**
 List Date & DOM: **04-22-2024 & 86**
 Condition: **Excellent**
 Frontage:
 Tax/Year: **\$106/2024**
 Neighborhood: **Waikiki**
Flood Zone: Zone AO - Tool

Year Built: **1976**
 Remodeled: **2017**
 Total Parking: **2**
[Assessed Value](#)
 Building: **\$647,800**
 Land: **\$88,800**
 Total: **\$736,600**
 Stories / CPR: / **No**

Zoning: X2 - Apartment Precinct

View: **Diamond Head, Golf Course, Marina/Canal, Mountain, Ocean**

Public Remarks: Tastefully remodeled 2/2 unit with luxury resort-style living in the heart of Waikiki. Rarely available turnkey unit, featuring high-end furnishes, marble flooring, and stylish bamboo ceiling. Relax and enjoy the city, diamond head, golf course, and oceans from 2 large private lanais. Convenient location to Waikiki's world-famous beaches, shopping, and restaurants. **Sale Conditions:** None **Schools:** [Jefferson](#), [Washington](#), [Kaimuki](#) * [Request Showing](#), [Photos](#), [History](#), [Maps](#), [Deed](#), [Watch List](#), [Tax Info](#)





Address	Price	Bd & Bth	Living / Avg.	Land Avg.	Lanai	Occ.	FL	DOM
2240 Kuhio Avenue 3203	\$1,229,000	2 & 2/0	1,043 \$1,178	46,783 \$26	231	9%	32	86

Address	Tax Maint. Ass.	Assessed Land	Assessed Building	Assessed Total	Ratio	Year & Remodeled
2240 Kuhio Avenue 3203	\$106 \$2,052 \$0	\$88,800	\$647,800	\$736,600	167%	1976 & 2017

[2240 Kuhio Avenue 3203](#) - MLS#: [202408423](#) - Tastefully remodeled 2/2 unit with luxury resort-style living in the heart of Waikiki. Rarely available turnkey unit, featuring high-end furnishes, marble flooring, and stylish bamboo ceiling. Relax and enjoy the city, diamond head, golf course, and oceans from 2 large private lanais. Convenient location to Waikiki's world-famous beaches, shopping, and restaurants. **Region:** Metro **Neighborhood:** Waikiki **Condition:** Excellent **Parking:** Assigned, Covered - 2 **Total Parking:** 2 **View:** Diamond Head, Golf Course, Marina/Canal, Mountain, Ocean **Frontage:** **Pool:** **Zoning:** X2 - Apartment Precinct **Sale Conditions:** None **Schools:** [Jefferson](#), [Washington](#), [Kaimuki](#) * [Request Showing](#), [Photos](#), [History](#), [Maps](#), [Deed](#), [Watch List](#), [Tax Info](#)

DOM = Days on Market, Occ. = Occupancy, FL = Floor Number