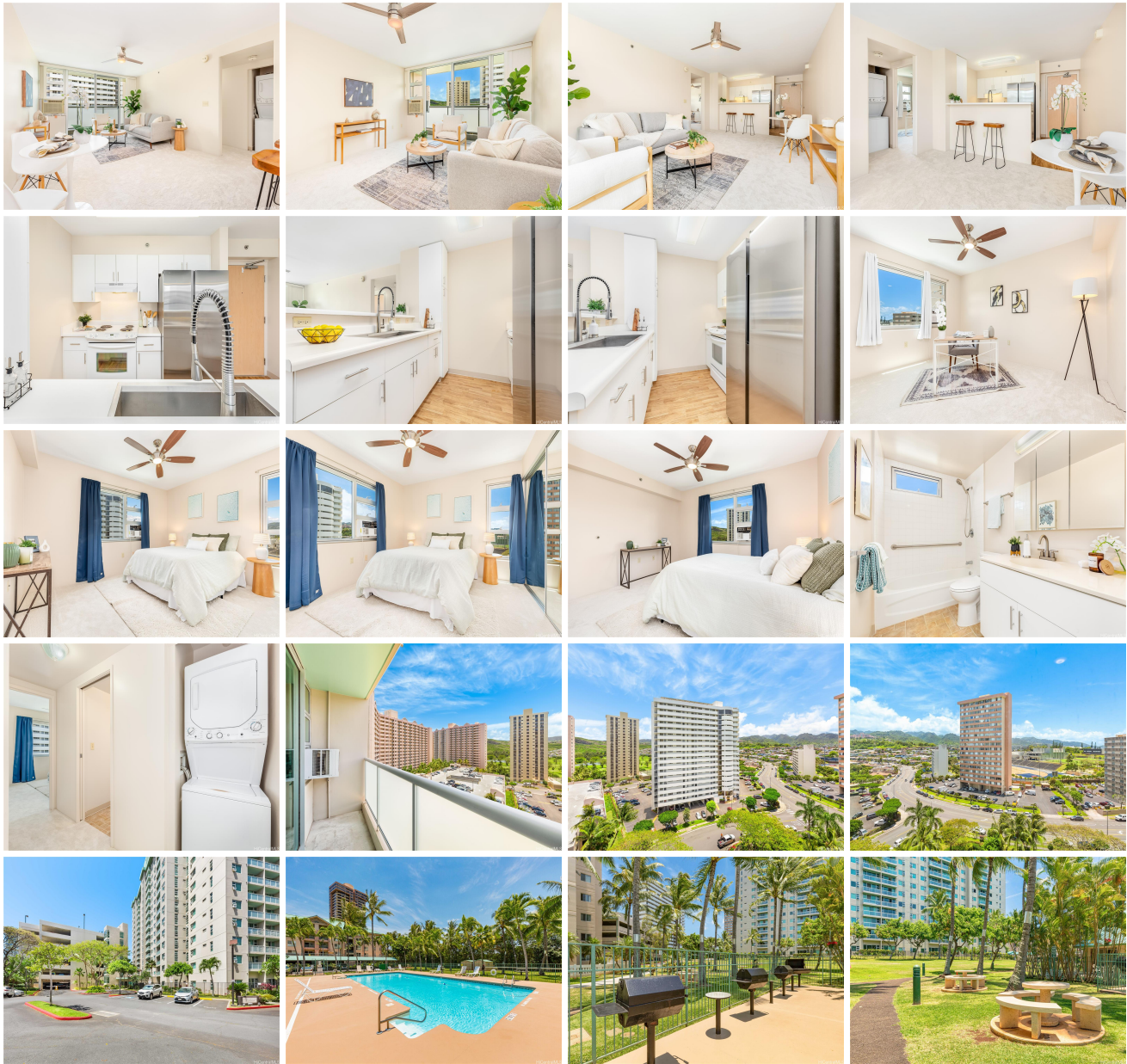


Country Club Village 6 3009 Ala Makahala Place Unit 1116, Honolulu 96818 * \$630,000

Beds: 2	MLS#: 202408494, FS	Year Built: 2008
Bath: 1/0	Status: Active	Remodeled:
Living Sq. Ft.: 750	List Date & DOM: 06-03-2024 & 43	Total Parking: 3
Land Sq. Ft.: 0	Condition: Average	Assessed Value
Lanai Sq. Ft.: 37	Frontage:	Building: \$576,200
Sq. Ft. Other: 0	Tax/Year: \$145/2024	Land: \$33,000
Total Sq. Ft. 787	Neighborhood: Salt Lake	Total: \$609,200
Maint./Assoc. \$664 / \$0	Flood Zone : Zone X - Tool	Stories / CPR: / No
Parking: Covered - 3+, Unassigned	Frontage:	
Zoning : 12 - A-2 Medium Density Apartme	View: None	

Public Remarks: Move right into this 2 bed, 1 bath unit with THREE parking spaces! This newer building, constructed in 2008, offers reasonable maintenance fees, plenty of guest parking and on-site security with secure entry. Enjoy the convenience of a central location! Close to the airport and easy access to freeway entrances going east or west. This end unit boasts new carpet and provides a comfortable and modern living space. Don't miss out on this fantastic opportunity! **Sale Conditions:** None **Schools:** , * [Request Showing](#), [Photos](#), [History](#), [Maps](#), [Deed](#), [Watch List](#), [Tax Info](#)



Address	Price	Bd & Bth	Living / Avg.	Land Avg.	DOM
3009 Ala Makahala Place 1116	\$630,000	2 & 1/0	750 \$840	0 \$inf	43

Address	Tax Maint. Ass.	Assessed Land	Assessed Building	Assessed Total	Ratio	Year & Remodeled
3009 Ala Makahala Place 1116	\$145 \$664 \$0	\$33,000	\$576,200	\$609,200	103%	2008 & NA

[3009 Ala Makahala Place 1116](#) - MLS#: [202408494](#) - Move right into this 2 bed, 1 bath unit with THREE parking spaces! This newer building, constructed in 2008, offers reasonable maintenance fees, plenty of guest parking and on-site security with secure entry. Enjoy the convenience of a central location! Close to the airport and easy access to freeway entrances going east or west. This end unit boasts new carpet and provides a comfortable and modern living space. Don't miss out on this fantastic opportunity! **Region:** Metro **Neighborhood:** Salt Lake **Condition:** Average **Parking:** Covered - 3+, Unassigned **Total Parking:** 3 **View:** None **Frontage:** **Pool:** **Zoning:** 12 - A-2 Medium Density Apartme **Sale Conditions:** None **Schools:** , , * [Request Showing](#), [Photos](#), [History](#), [Maps](#), [Deed](#), [Watch List](#), [Tax Info](#)

DOM = Days on Market