

1015 Wilder 1015 Wilder Avenue Unit 403, Honolulu 96822 * 1015 Wilder * \$965,000

Beds: 3	MLS#: <u>202408495</u>, FS	Year Built: 1989
Bath: 2/0	Status: Active	Remodeled:
Living Sq. Ft.: 1,489	List Date & DOM: 04-18-2024 & 73	Total Parking: 2
Land Sq. Ft.: 54,014	Condition: Average	Assessed Value
Lanai Sq. Ft.: 244	Frontage:	Building: \$645,300
Sq. Ft. Other: 0	Tax/Year: \$201/2024	Land: \$202,900
Total Sq. Ft. 1,733	Neighborhood: Punchbowl Area	Total: \$848,200
Maint./Assoc. \$1,613 / \$0	Flood Zone : Zone X - Tool	Stories / CPR: 8-14 / No

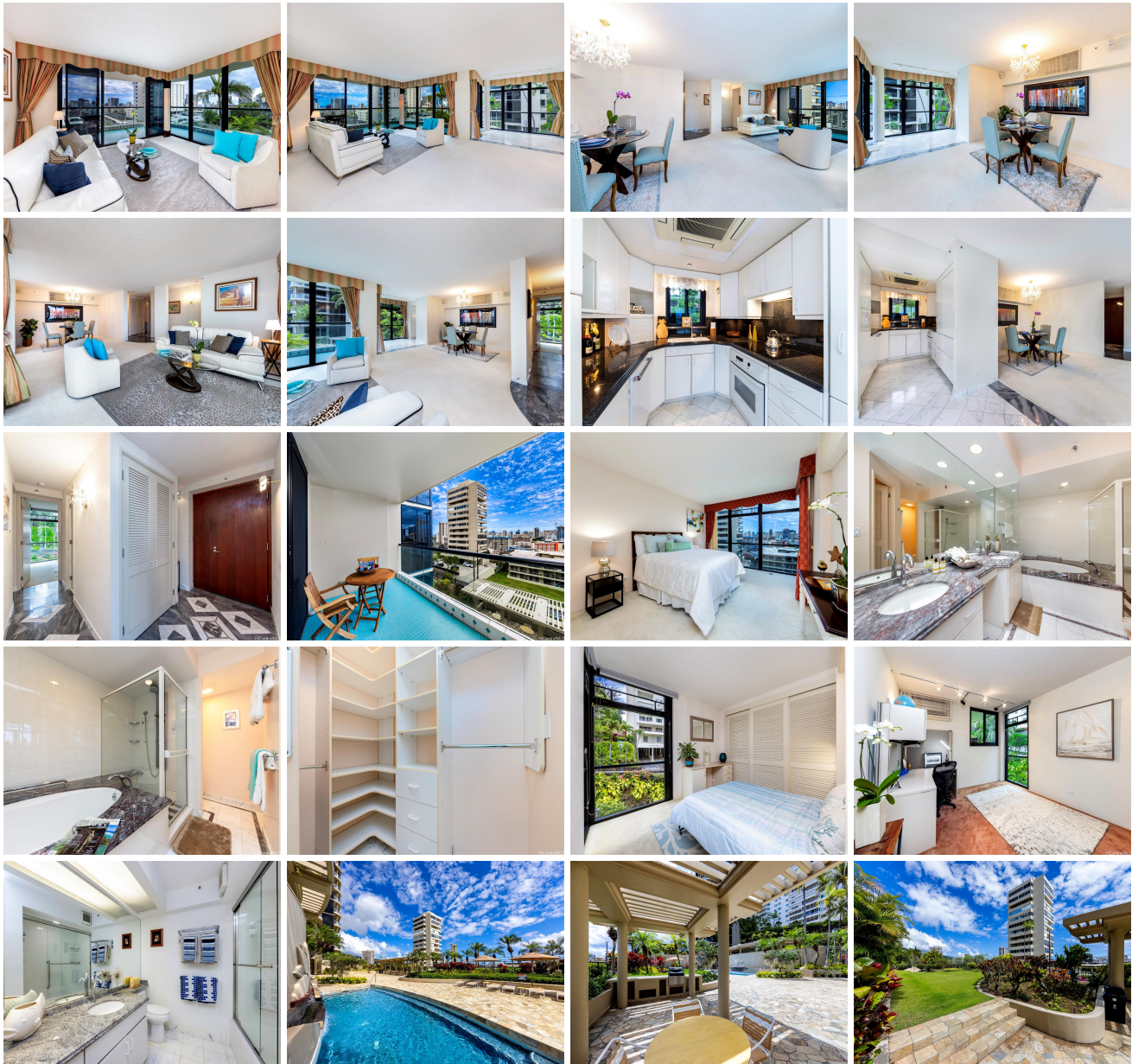
Parking: **Assigned, Covered - 2, Garage, Guest, Secured Entry**

Frontage:

[Zoning](#): **12 - A-2 Medium Density Apartme**

View: **City, Mountain, Ocean**

Public Remarks: Situated along a quiet cul-de-sac along the footsteps of Punchbowl, 1015 Wilder Ave is a boutique condominium residence tucked away in a beautiful neighborhood. A spacious primary living area welcomes you home, featuring a separate living room, dining area, & breakfast nook, all with Diamond Head & Pacific Ocean views. The kitchen has been thoughtfully re-imagined to maximize functional & storage spaces, featuring side-by-side full-size Sub-zero refrigerator & freezer, plus a newly-installed Bosch cook-top & new dishwasher. Connected to the kitchen & main living area, a wrap-around lanai invites you to enjoy sunrises & sunsets as part of your daily routine. The primary bedroom suite features a resort-style bathroom with double vanity, separate soaking tub, walk-in shower, & walk-in closet. Two additional bedrooms are positioned on the cooler side of the building & feature built-ins. Extremely well-managed building with friendly staff, well-kept grounds with pool, hot tub, barbecue, seating areas, & large grass lawn. Unit includes two parking spaces. Make sure 1015 Wilder Ave #403 is on your must-see list! **Sale Conditions:** None **Schools:** [Lincoln](#), [Stevenson](#), [Roosevelt](#) * [Request Showing](#), [Photos](#), [History](#), [Maps](#), [Deed](#), [Watch List](#), [Tax Info](#)





Address	Price	Bd & Bth	Living / Avg.	Land Avg.	Lanai	Occ.	FL	DOM
1015 Wilder Avenue 403	\$965,000	3 & 2/0	1,489 \$648	54,014 \$18	244	64%	4	73

Address	Tax Maint. Ass.	Assessed Land	Assessed Building	Assessed Total	Ratio	Year & Remodeled
1015 Wilder Avenue 403	\$201 \$1,613 \$0	\$202,900	\$645,300	\$848,200	114%	1989 & NA

[1015 Wilder Avenue 403](#) - MLS#: [202408495](#) - Situated along a quiet cul-de-sac along the footsteps of Punchbowl, 1015 Wilder Ave is a boutique condominium residence tucked away in a beautiful neighborhood. A spacious primary living area welcomes you home, featuring a separate living room, dining area, & breakfast nook, all with Diamond Head & Pacific Ocean views. The kitchen has been thoughtfully re-imagined to maximize functional & storage spaces, featuring side-by-side full-size Sub-zero refrigerator & freezer, plus a newly-installed Bosch cook-top & new dishwasher. Connected to the kitchen & main living area, a wrap-around lanai invites you to enjoy sunrises & sunsets as part of your daily routine. The primary bedroom suite features a resort-style bathroom with double vanity, separate soaking tub, walk-in shower, & walk-in closet. Two additional bedrooms are positioned on the cooler side of the building & feature built-ins. Extremely well-managed building with friendly staff, well-kept grounds with pool, hot tub, barbecue, seating areas, & large grass lawn. Unit includes two parking spaces. Make sure 1015 Wilder Ave #403 is on your must-see list! **Region:** Metro **Neighborhood:** Punchbowl Area **Condition:** Average **Parking:** Assigned, Covered - 2, Garage, Guest, Secured Entry **Total Parking:** 2 **View:** City, Mountain, Ocean **Frontage:** **Pool:** **Zoning:** 12 - A-2 Medium Density Apartme **Sale Conditions:** None **Schools:** [Lincoln](#), [Stevenson](#), [Roosevelt](#) * [Request Showing](#), [Photos](#), [History](#), [Maps](#), [Deed](#), [Watch List](#), [Tax Info](#)

DOM = Days on Market, Occ. = Occupancy, FL = Floor Number