

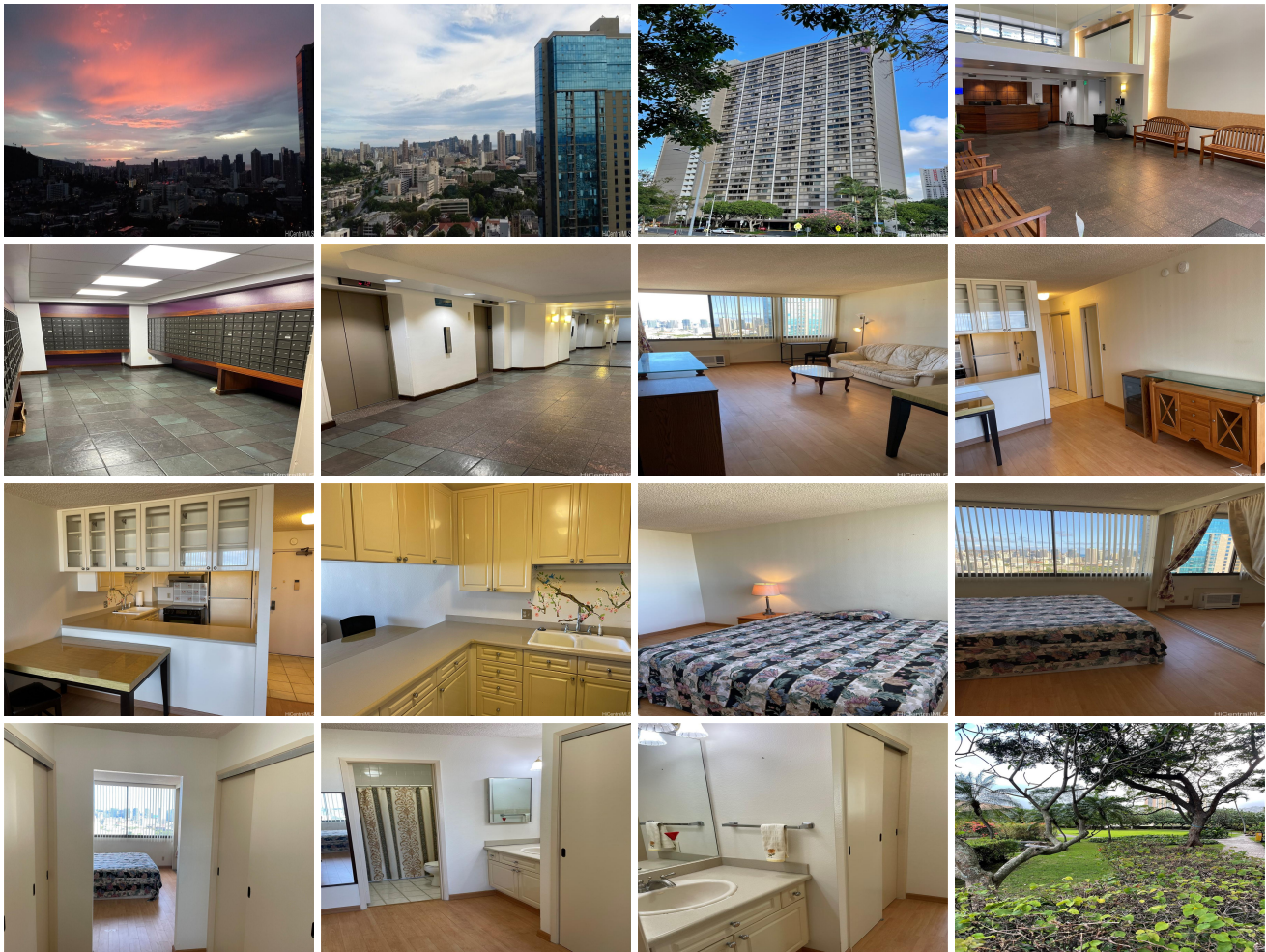
Kukui Plaza 55 S Kukui Street Unit D2912, Honolulu 96813 * \$415,000 * Originally \$427,500

Bed(s): 1	MLS#: 202408516, FS	Year Built: 1976
Bath: 1/0	Status: Active	Remodeled:
Living Sq. Ft.: 605	List Date & DOM: 04-17-2024 & 91	Total Parking: 1
Land Sq. Ft.: 221,459	Condition: Above Average	Assessed Value
Lanai Sq. Ft.: 0	Frontage:	Building: \$355,500
Sq. Ft. Other: 0	Tax/Year: \$250/2024	Land: \$53,200
Total Sq. Ft. 605	Neighborhood: Downtown	Total: \$408,700
Maint./Assoc. \$496 / \$0	Flood Zone : Zone D - Tool	Stories / CPR: 21+ / No
Parking: Assigned, Guest, Secured Entry, Street	Frontage:	

[Zoning](#): **34 - BMX-4 Central Business Mix**

View: **City, Diamond Head, Mountain, Sunrise**

Public Remarks: PICTURE PERFECT VIEW FACING DIAMOND HEAD VIEWS OF DOWNTOWN - ALA MOANA TOWARDS WAIKIKI; This apartment has a spectacular sunrise view with northeast trade winds to begin your day! Kukui Plaza is positioned to overlook the vibrant cityscape and offers a perfect blend of convenience and practicality for a new home buyer. Walking distance to Downtown Honolulu businesses, financial districts and walking distance to restaurants and Aloha Tower Marketplace in one direction and to Chinatown in the other direction. Convenient Safeway and Longs Drugs just across the street. Kukui Plaza offers walking paths, BBQ area with garden views, a covered recreation area with large swimming pool after a hard day of work...this is the place for enjoyment and relaxation. The bedroom has a sliding door that opens to the living & dining area. The community laundry room is on the same floor as the apartment. Your reserved standard full size parking stall is a half level down from the Main lobby and 25 yards to your car with easy access in and out with a breeze!
Sale Conditions: None **Schools:** [Royal](#), [Keelikolani](#), [Mckinley](#) * [Request Showing](#), [Photos](#), [History](#), [Maps](#), [Deed](#), [Watch List](#), [Tax Info](#)





Address	Price	Bd & Bth	Living / Avg.	Land Avg.	DOM
55 S Kukui Street D2912	\$415,000	1 & 1/0	605 \$686	221,459 \$2	91

Address	Tax Maint. Ass.	Assessed Land	Assessed Building	Assessed Total	Ratio	Year & Remodeled
55 S Kukui Street D2912	\$250 \$496 \$0	\$53,200	\$355,500	\$408,700	102%	1976 & NA

[55 S Kukui Street D2912](#) - MLS#: [202408516](#) - Original price was \$427,500 - PICTURE PERFECT VIEW FACING DIAMOND HEAD VIEWS OF DOWNTOWN - ALA MOANA TOWARDS WAIKIKI; This apartment has a spectacular sunrise view with northeast trade winds to begin your day! Kukui Plaza is positioned to overlook the vibrant cityscape and offers a perfect blend of convenience and practicality for a new home buyer. Walking distance to Downtown Honolulu businesses, financial districts and walking distance to restaurants and Aloha Tower Marketplace in one direction and to Chinatown in the other direction. Convenient Safeway and Longs Drugs just across the street. Kukui Plaza offers walking paths, BBQ area with garden views, a covered recreation area with large swimming pool after a hard day of work...this is the place for enjoyment and relaxation. The bedroom has a sliding door that opens to the living & dining area. The community laundry room is on the same floor as the apartment. Your reserved standard full size parking stall is a half level down from the Main lobby and 25 yards to your car with easy access in and out with a breeze! **Region:** Metro **Neighborhood:** Downtown **Condition:** Above Average **Parking:** Assigned, Guest, Secured Entry, Street **Total Parking:** 1 **View:** City, Diamond Head, Mountain, Sunrise **Frontage:** **Pool:** **Zoning:** 34 - BMX-4 Central Business Mix **Sale Conditions:** None **Schools:** [Royal](#), [Keelikolani](#), [Mckinley](#) * [Request Showing](#), [Photos](#), [History](#), [Maps](#), [Deed](#), [Watch List](#), [Tax Info](#)

DOM = Days on Market