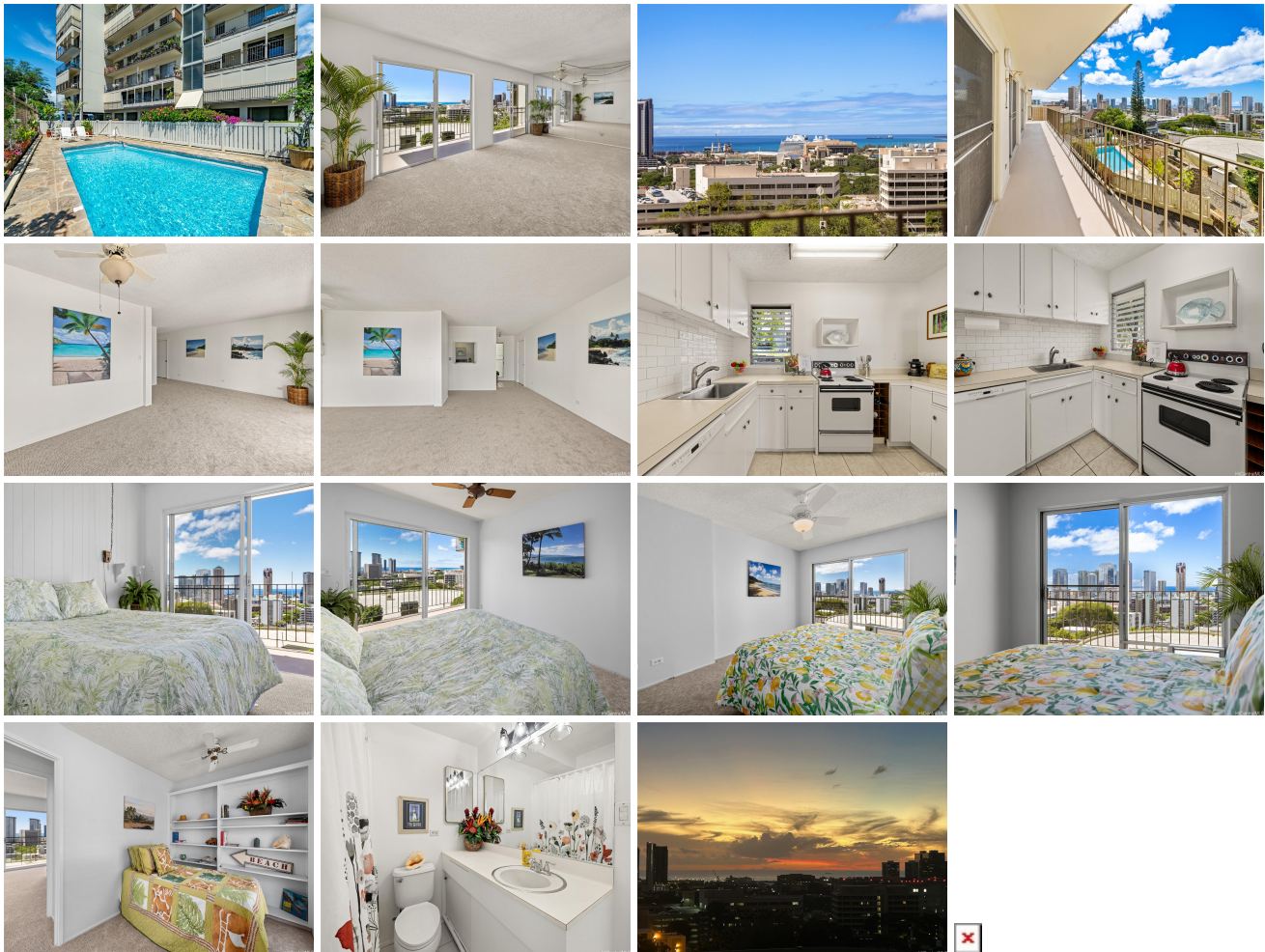


Park Tower 625 Iolani Avenue Unit 2023, Honolulu 96813 * \$549,000 * Originally \$589,000

Beds: 3	MLS#: 202408586, FS	Year Built: 1962
Bath: 2/0	Status: Active Under Contract	Remodeled:
Living Sq. Ft.: 1,056	List Date & DOM: 04-16-2024 & 83	Total Parking: 2
Land Sq. Ft.: 11,761	Condition: Average	Assessed Value
Lanai Sq. Ft.: 210	Frontage: Other	Building: \$464,800
Sq. Ft. Other: 0	Tax/Year: \$109/2024	Land: \$114,100
Total Sq. Ft. 1,266	Neighborhood: Punchbowl-lower	Total: \$578,900
Maint./Assoc. \$962 / \$0	Flood Zone : Zone X - Tool	Stories / CPR: 8-14 / No
Parking: Open - 2	Frontage: Other	
Zoning : 12 - A-2 Medium Density Apartme	View: Ocean, Sunset	

Public Remarks: 3 bedrooms with view! Spacious, bright, and cheery 3-bedroom, 2-bath residence, with two convenient parking spaces. Perched on a bluff, boasting breathtaking views of the Honolulu skyline, the ocean, and sunsets. Extra-large view lanai offers ample space for a table, chairs, and more. The property's central location places you at the heart of Honolulu, with easy access to the city's vibrant culture, dining, and entertainment. Indulge in the comfort of new luxury carpeting underfoot and walls adorned with fresh paint. Storage is a breeze with ample closets, ensuring a clutter-free living space. This home is not just a dwelling, but a lifestyle choice for those seeking balance, beauty, and a connection to the heart of Honolulu. Come See Today, EZ to see! **Sale Conditions:** None **Schools:** , , * [Request Showing](#), [Photos](#), [History](#), [Maps](#), [Deed](#), [Watch List](#), [Tax Info](#)



Address	Price	Bd & Bth	Living / Avg.	Land Avg.	DOM
625 Iolani Avenue 2023	\$549,000	3 & 2/0	1,056 \$520	11,761 \$47	83

Address	Tax Maint. Ass.	Assessed Land	Assessed Building	Assessed Total	Ratio	Year & Remodeled
625 Iolani Avenue 2023	\$109 \$962 \$0	\$114,100	\$464,800	\$578,900	95%	1962 & NA

[625 Iolani Avenue 2023](#) - MLS#: [202408586](#) - Original price was \$589,000 - 3 bedrooms with view! Spacious, bright, and cheery 3-bedroom, 2-bath residence, with two convenient parking spaces. Perched on a bluff, boasting breathtaking views of the Honolulu skyline, the ocean, and sunsets. Extra-large view lanai offers ample space for a table, chairs, and more. The property's central location places you at the heart of Honolulu, with easy access to the city's vibrant culture, dining, and entertainment. Indulge in the comfort of new luxury carpeting underfoot and walls adorned with fresh paint. Storage is a breeze with ample closets, ensuring a clutter-free living space. This home is not just a dwelling, but a lifestyle choice for those seeking balance, beauty, and a connection to the heart of Honolulu. Come See Today, EZ to see! **Region:** Metro **Neighborhood:** Punchbowl-lower **Condition:** Average **Parking:** Open - 2 **Total Parking:** 2 **View:** Ocean, Sunset **Frontage:** Other **Pool:** **Zoning:** 12 - A-2 Medium Density Apartme **Sale Conditions:** None **Schools:** , , * [Request Showing](#), [Photos](#), [History](#), [Maps](#), [Deed](#), [Watch List](#), [Tax Info](#)

DOM = Days on Market