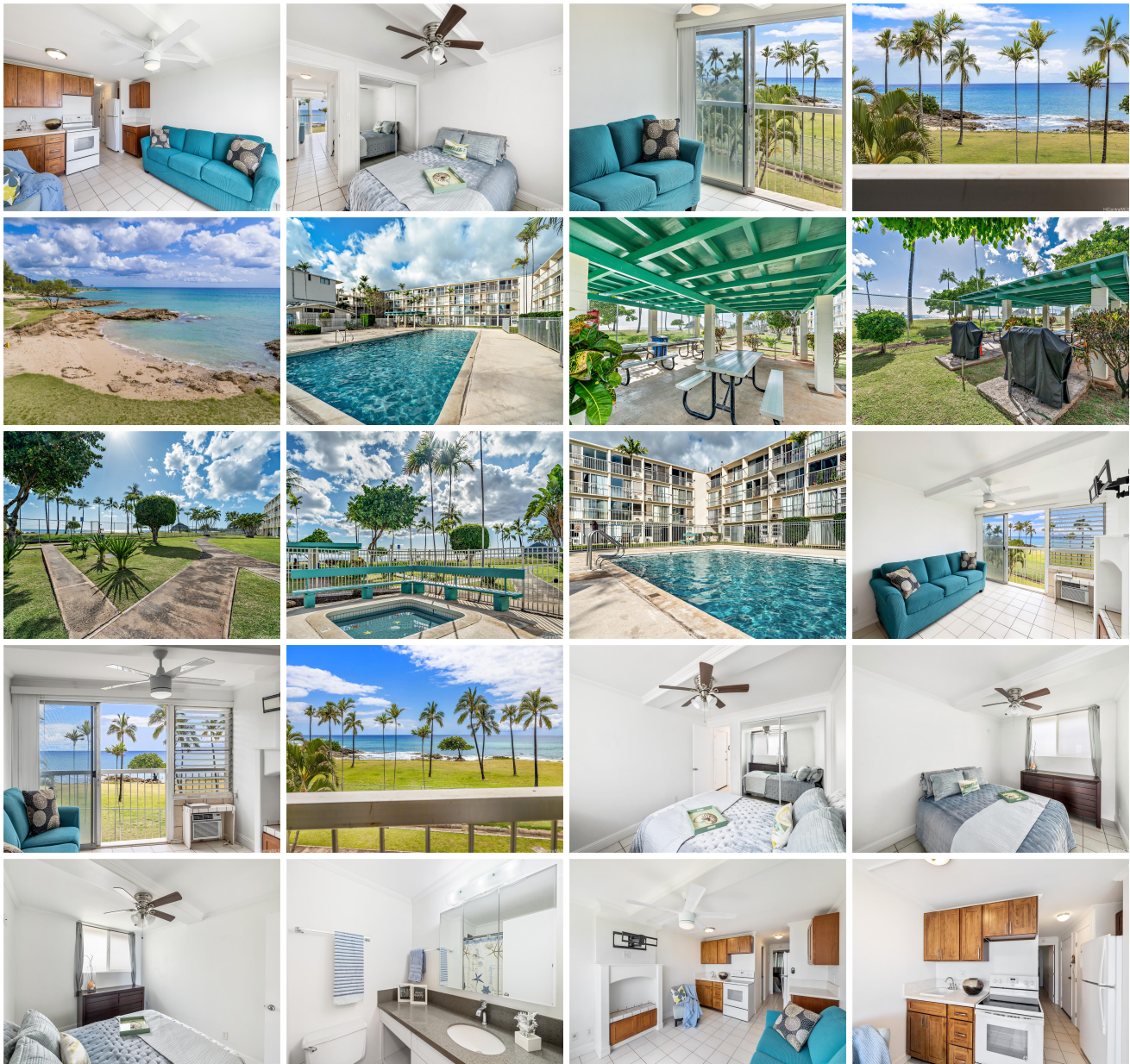


**Makaha Surfside 85-175 Farrington Highway Unit B318, Waianae 96792 \* \$239,000**

Beds: <b>1</b>	MLS#: <b>202408597, FS</b>	Year Built: <b>1974</b>
Bath: <b>1/0</b>	Status: <b>Active</b>	Remodeled:
Living Sq. Ft.: <b>412</b>	List Date & DOM: <b>04-19-2024 &amp; 89</b>	Total Parking: <b>1</b>
Land Sq. Ft.: <b>242,019</b>	Condition: <b>Excellent</b>	<a href="#">Assessed Value</a>
Lanai Sq. Ft.: <b>0</b>	Frontage: <b>Other, Sandy Beach</b>	Building: <b>\$178,600</b>
Sq. Ft. Other: <b>0</b>	Tax/Year: <b>\$63/2023</b>	Land: <b>\$36,600</b>
Total Sq. Ft. <b>412</b>	Neighborhood: <b>Waianae</b>	Total: <b>\$215,200</b>
Maint./Assoc. <b>\$610 / \$0</b>	<a href="#">Flood Zone</a> : <b>Zone D - Tool</b>	Stories / CPR: <b>4-7 / No</b>
Parking: <b>Assigned, Covered - 1, Guest</b>	Frontage: <b>Other, Sandy Beach</b>	
<a href="#">Zoning</a> : <b>11 - A-1 Low Density Apartment</b>	View: <b>Garden, Ocean</b>	

**Public Remarks:** Make Paradise Yours! Enjoy the unobstructed DIRECT ocean views from this move in ready unit. Comes with one covered parking stall and is easy to maintain with tiled floors throughout. Upgraded and ready to go! **Sale Conditions:** None **Schools:** , , \* [Request Showing](#), [Photos](#), [History](#), [Maps](#), [Deed](#), [Watch List](#), [Tax Info](#)





Address	Price	Bd & Bth	Living / Avg.	Land   Avg.	DOM
<a href="#">85-175 Farrington Highway B318</a>	<a href="#">\$239,000</a>	1 & 1/0	412   \$580	242,019   \$1	89

Address	Tax   Maint.   Ass.	Assessed Land	Assessed Building	Assessed Total	Ratio	Year & Remodeled
<a href="#">85-175 Farrington Highway B318</a>	\$63   \$610   \$0	\$36,600	\$178,600	\$215,200	111%	1974 & NA

[85-175 Farrington Highway B318](#) - MLS#: [202408597](#) - Make Paradise Yours! Enjoy the unobstructed DIRECT ocean views from this move in ready unit. Comes with one covered parking stall and is easy to maintain with tiled floors throughout. Upgraded and ready to go! **Region:** Leeward **Neighborhood:** Waianae **Condition:** Excellent **Parking:** Assigned, Covered - 1, Guest **Total Parking:** 1 **View:** Garden, Ocean **Frontage:** Other,Sandy Beach **Pool:** **Zoning:** 11 - A-1 Low Density Apartment **Sale Conditions:** None **Schools:** , , \* [Request Showing](#), [Photos](#), [History](#), [Maps](#), [Deed](#), [Watch List](#), [Tax Info](#)

DOM = Days on Market