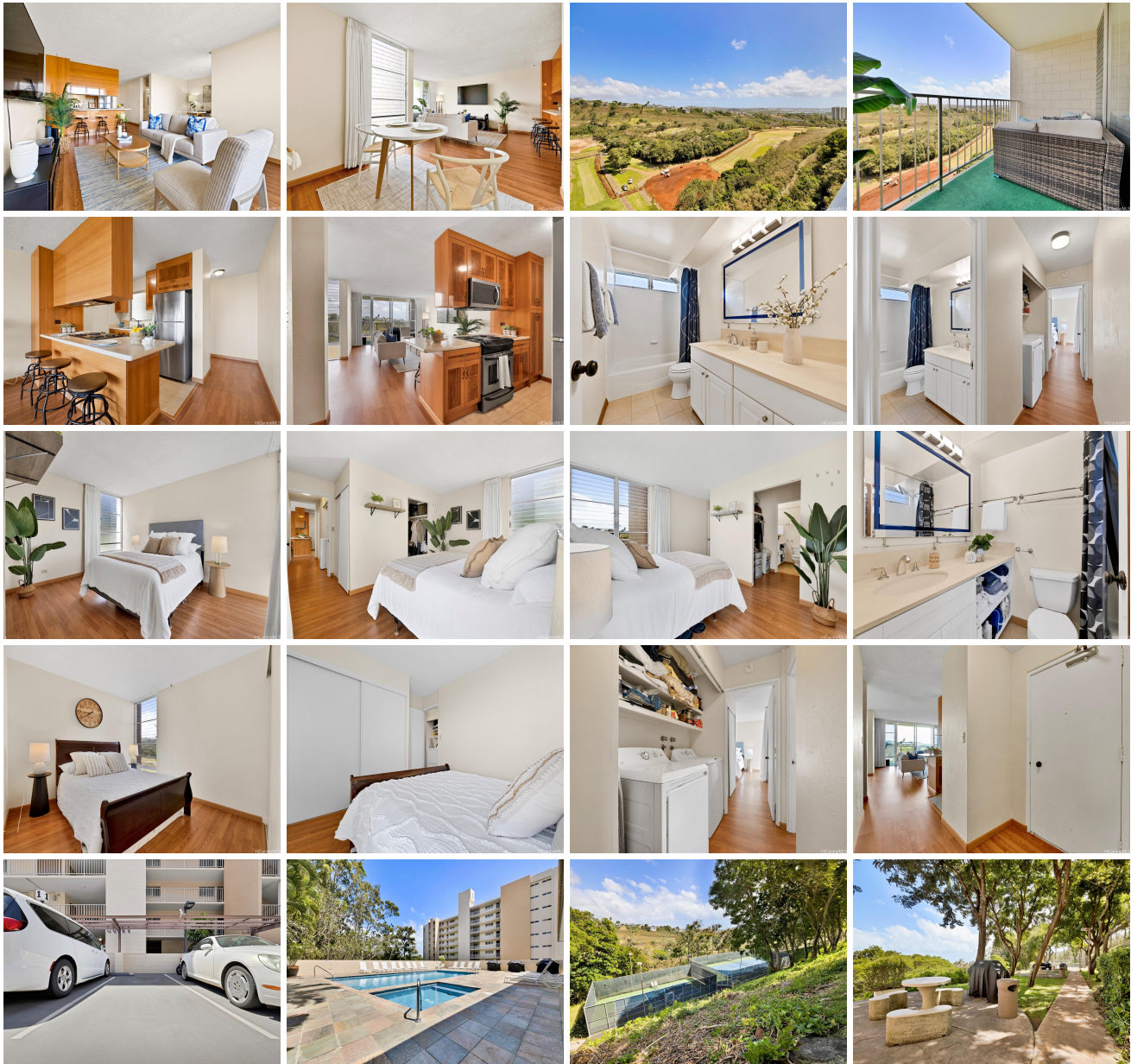
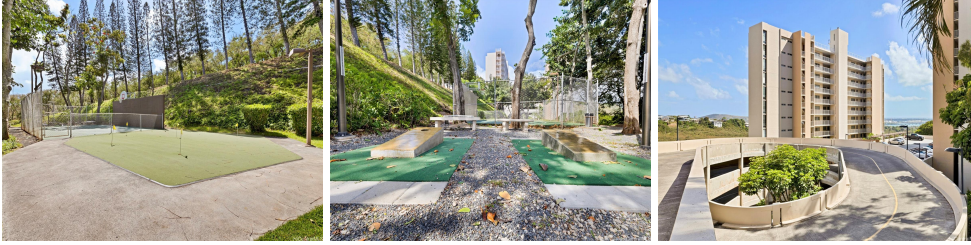


Colonnade on the Greens 98-707 Iho Place Unit 2/901, Aiea 96701 * Colonnade on the Greens * \$508,000 * Originally \$515,000

Bed: 2	MLS#: 202408652, FS	Year Built: 1976
Bath: 2/0	Status: Active	Remodeled:
Living Sq. Ft.: 1,033	List Date & DOM: 04-19-2024 & 72	Total Parking: 1
Land Sq. Ft.: 298,212	Condition: Above Average	Assessed Value
Lanai Sq. Ft.: 91	Frontage: Golf Course	Building: \$365,800
Sq. Ft. Other: 0	Tax/Year: \$144/2023	Land: \$148,000
Total Sq. Ft. 1,124	Neighborhood: Pearlridge	Total: \$513,800
Maint./Assoc. \$1,082 / \$0	Flood Zone : Zone D - Tool	Stories / CPR: 15-20 / No
Parking: Assigned, Guest, Street	Frontage: Golf Course	
Zoning : 12 - A-2 Medium Density Apartme	View: City, Golf Course, Mountain, Ocean	

Public Remarks: Welcome to Colonnade on the Greens, a hidden gem that offers the ultimate retreat for those seeking privacy & serenity. Tucked away from the hustle & bustle of the city, this highly desirable corner unit features 2 bedrooms, 2 bathrooms + den. Come home and enjoy the lush landscape and captivating views! Upon entering, you are greeted by the cool breeze and an abundance of natural light, illuminating the spacious interior. The open-concept living area creates an inviting atmosphere perfect for both relaxation and entertaining. The kitchen provides ample storage space and the unit also comes with a new washer & dryer. Retreat to the primary bedroom where you'll find 2 large closets and an ensuite bath. Step outside onto your own private balcony and soak in the sweeping views of the mountains, ocean, Pearl Harbor and the city skyline. This outdoor oasis is the perfect place to relax and rejuvenate with your cup of coffee or glass of wine. Enjoy access to an array of exclusive amenities including: a fitness center, swimming pool, hot tub, sauna, bbq area, recreation room, tennis court, pickleball court, basketball court, cornhole, putting green, and 24-hour security for peace of mind. **Sale Conditions:** None **Schools:** [Pearl Ridge](#), [Aiea](#), [Aiea](#) * [Request Showing](#), [Photos](#), [History](#), [Maps](#), [Deed](#), [Watch List](#), [Tax Info](#)





Address	Price	Bd & Bth	Living / Avg.	Land Avg.	Lanai	Occ.	FL	DOM
98-707 Iho Place 2/901	\$508,000	2 & 2/0	1,033 \$492	298,212 \$2	91	65%	9	72

Address	Tax Maint. Ass.	Assessed Land	Assessed Building	Assessed Total	Ratio	Year & Remodeled
98-707 Iho Place 2/901	\$144 \$1,082 \$0	\$148,000	\$365,800	\$513,800	99%	1976 & NA

[98-707 Iho Place 2/901](#) - MLS#: [202408652](#) - Original price was \$515,000 - Welcome to Colonnade on the Greens, a hidden gem that offers the ultimate retreat for those seeking privacy & serenity. Tucked away from the hustle & bustle of the city, this highly desirable corner unit features 2 bedrooms, 2 bathrooms + den. Come home and enjoy the lush landscape and captivating views! Upon entering, you are greeted by the cool breeze and an abundance of natural light, illuminating the spacious interior. The open-concept living area creates an inviting atmosphere perfect for both relaxation and entertaining. The kitchen provides ample storage space and the unit also comes with a new washer & dryer. Retreat to the primary bedroom where you'll find 2 large closets and an ensuite bath. Step outside onto your own private balcony and soak in the sweeping views of the mountains, ocean, Pearl Harbor and the city skyline. This outdoor oasis is the perfect place to relax and rejuvenate with your cup of coffee or glass of wine. Enjoy access to an array of exclusive amenities including: a fitness center, swimming pool, hot tub, sauna, bbq area, recreation room, tennis court, pickleball court, basketball court, cornhole, putting green, and 24-hour security for peace of mind. **Region:** Pearl City **Neighborhood:** Pearlridge **Condition:** Above Average **Parking:** Assigned, Guest, Street **Total Parking:** 1 **View:** City, Golf Course, Mountain, Ocean **Frontage:** Golf Course **Pool:** **Zoning:** 12 - A-2 Medium Density Apartme **Sale Conditions:** None **Schools:** [Pearl Ridge](#), [Aiea](#), [Aiea](#) * [Request Showing](#), [Photos](#), [History](#), [Maps](#), [Deed](#), [Watch List](#), [Tax Info](#)

DOM = Days on Market, Occ. = Occupancy, FL = Floor Number