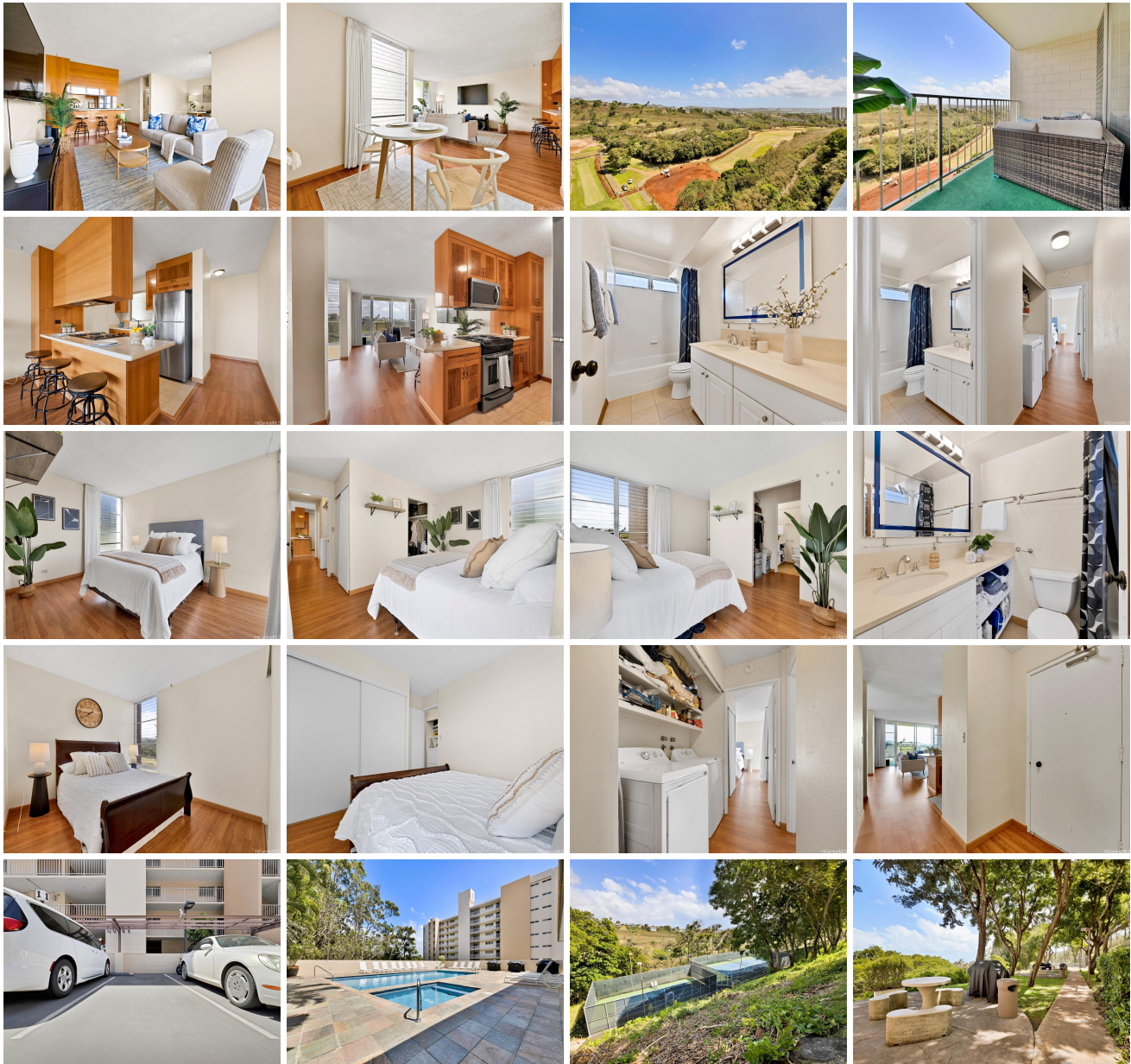


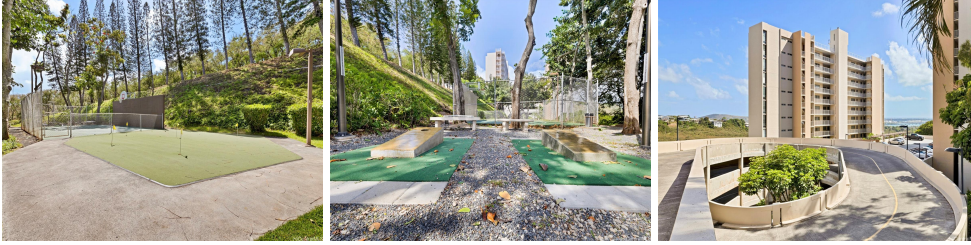
Colonnade on the Greens 98-707 Iho Place Unit 2/901, Aiea 96701 * \$508,000 * Originally

\$515,000

| | | |
|--|---|--|
| Beds: 2 Bath: 2/0 Living Sq. Ft.: 1,033 Land Sq. Ft.: 298,212 Lanai Sq. Ft.: 91 Sq. Ft. Other: 0 Total Sq. Ft. 1,124 Maint./Assoc. \$1,082 / \$0 Parking: Assigned, Guest, Street Zoning: 12 - A-2 Medium Density Apartme | MLS#: 202408652, FS Status: Active List Date & DOM: 04-19-2024 & 72 Condition: Above Average Frontage: Golf Course Tax/Year: \$144/2023 Neighborhood: Pearlridge Flood Zone: Zone D - Tool | Year Built: 1976 Remodeled: Total Parking: 1 Assessed Value Building: \$365,800 Land: \$148,000 Total: \$513,800 Stories / CPR: 15-20 / No Frontage: Golf Course View: City, Golf Course, Mountain, Ocean |
|--|---|--|

Public Remarks: Welcome to Colonnade on the Greens, a hidden gem that offers the ultimate retreat for those seeking privacy & serenity. Tucked away from the hustle & bustle of the city, this highly desirable corner unit features 2 bedrooms, 2 bathrooms + den. Come home and enjoy the lush landscape and captivating views! Upon entering, you are greeted by the cool breeze and an abundance of natural light, illuminating the spacious interior. The open-concept living area creates an inviting atmosphere perfect for both relaxation and entertaining. The kitchen provides ample storage space and the unit also comes with a new washer & dryer. Retreat to the primary bedroom where you'll find 2 large closets and an ensuite bath. Step outside onto your own private balcony and soak in the sweeping views of the mountains, ocean, Pearl Harbor and the city skyline. This outdoor oasis is the perfect place to relax and rejuvenate with your cup of coffee or glass of wine. Enjoy access to an array of exclusive amenities including: a fitness center, swimming pool, hot tub, sauna, bbq area, recreation room, tennis court, pickleball court, basketball court, cornhole, putting green, and 24-hour security for peace of mind. **Sale Conditions:** None **Schools:** [Pearl Ridge](#), [Aiea](#), [Aiea](#) * [Request Showing](#), [Photos](#), [History](#), [Maps](#), [Deed](#), [Watch List](#), [Tax Info](#)





| Address | Price | Bd & Bth | Living / Avg. | Land Avg. | DOM |
|--|------------------|----------|---------------|---------------|-----|
| 98-707 Iho Place 2/901 | \$508,000 | 2 & 2/0 | 1,033 \$492 | 298,212 \$2 | 72 |

| Address | Tax Maint. Ass. | Assessed Land | Assessed Building | Assessed Total | Ratio | Year & Remodeled |
|--|-----------------------|---------------|-------------------|----------------|-------|------------------|
| 98-707 Iho Place 2/901 | \$144 \$1,082 \$0 | \$148,000 | \$365,800 | \$513,800 | 99% | 1976 & NA |

[98-707 Iho Place 2/901](#) - MLS#: [202408652](#) - Original price was \$515,000 - Welcome to Colonnade on the Greens, a hidden gem that offers the ultimate retreat for those seeking privacy & serenity. Tucked away from the hustle & bustle of the city, this highly desirable corner unit features 2 bedrooms, 2 bathrooms + den. Come home and enjoy the lush landscape and captivating views! Upon entering, you are greeted by the cool breeze and an abundance of natural light, illuminating the spacious interior. The open-concept living area creates an inviting atmosphere perfect for both relaxation and entertaining. The kitchen provides ample storage space and the unit also comes with a new washer & dryer. Retreat to the primary bedroom where you'll find 2 large closets and an ensuite bath. Step outside onto your own private balcony and soak in the sweeping views of the mountains, ocean, Pearl Harbor and the city skyline. This outdoor oasis is the perfect place to relax and rejuvenate with your cup of coffee or glass of wine. Enjoy access to an array of exclusive amenities including: a fitness center, swimming pool, hot tub, sauna, bbq area, recreation room, tennis court, pickleball court, basketball court, cornhole, putting green, and 24-hour security for peace of mind. **Region:** Pearl City **Neighborhood:** Pearlridge **Condition:** Above Average **Parking:** Assigned, Guest, Street **Total Parking:** 1 **View:** City, Golf Course, Mountain, Ocean **Frontage:** Golf Course **Pool:** **Zoning:** 12 - A-2 Medium Density Apartme **Sale Conditions:** None **Schools:** [Pearl Ridge](#), [Aiea](#), [Aiea](#) * [Request Showing](#), [Photos](#), [History](#), [Maps](#), [Deed](#), [Watch List](#), [Tax Info](#)

DOM = Days on Market