

Discovery Bay 1778 Ala Moana Boulevard Unit 2918, Honolulu 96815 * Discovery Bay *

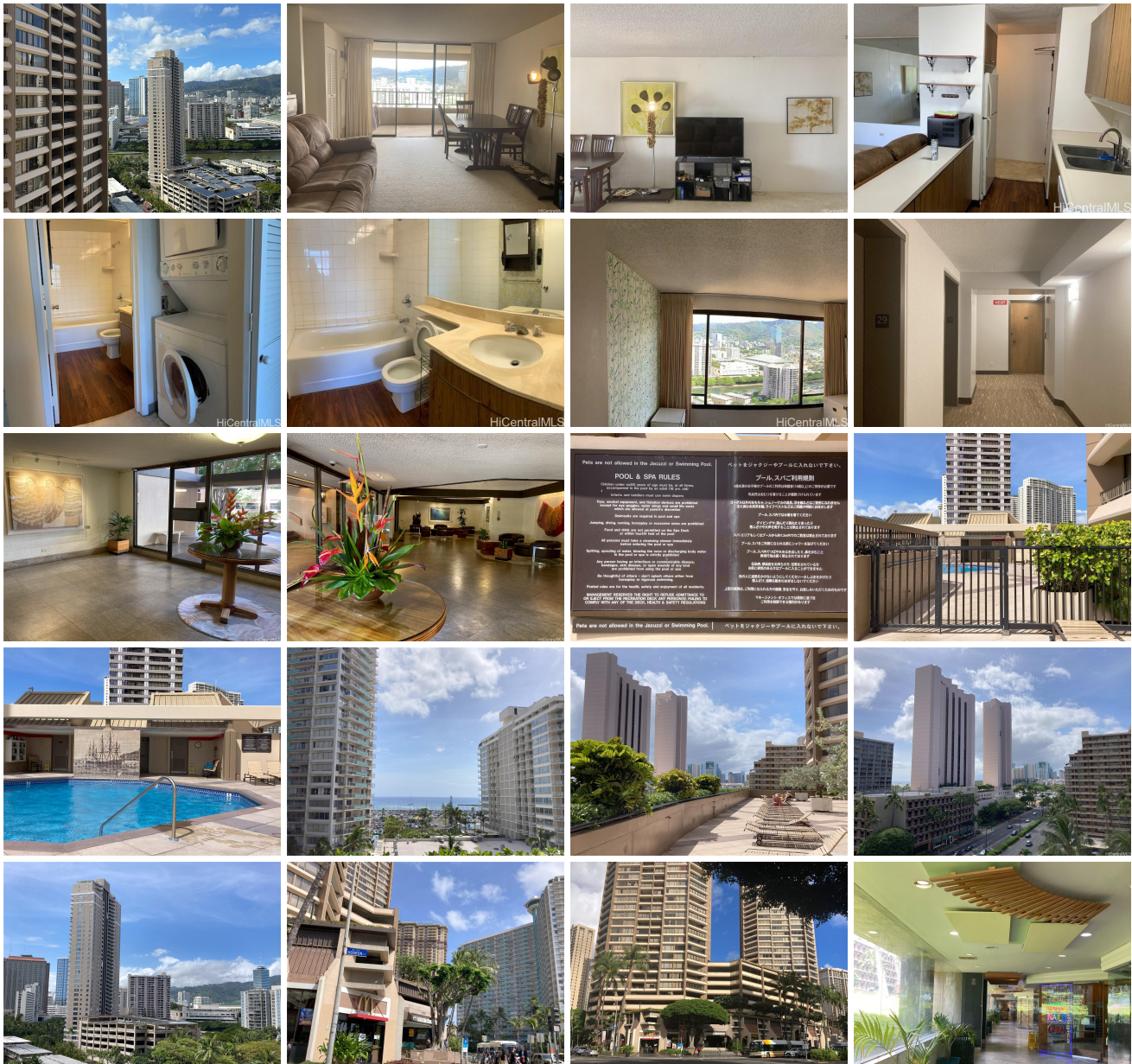
\$305,000 * Originally \$310,000

| | | |
|---|--|--------------------------------|
| Beds: 1 | MLS#: 202408666, LH | Year Built: 1977 |
| Bath: 1/0 | Status: Active | Remodeled: |
| Living Sq. Ft.: 683 | List Date & DOM: 05-05-2024 & 73 | Total Parking: 1 |
| Land Sq. Ft.: 84,463 | Condition: Above Average | Assessed Value |
| Lanai Sq. Ft.: 86 | Frontage: Other | Building: \$562,500 |
| Sq. Ft. Other: 0 | Tax/Year: \$167/2023 | Land: \$23,700 |
| Total Sq. Ft. 769 | Neighborhood: Waikiki | Total: \$586,200 |
| Maint./Assoc. \$917 / \$0 | Flood Zone : Zone AE - Tool | Stories / CPR: 21+ / No |
| Parking: Assigned, Open - 1, Secured Entry, Street | Frontage: Other | |

Zoning: X2 - Apartment Precinct

View: City, Mountain

Public Remarks: Discovery Bay Condominium is situated in very convenient part of Waikiki, only about 10 minute walk south to surfer popular Kahanamoku Beach, about 10 minute walk west to world famous Ala Moana Center and to all the world class shops and restaurants. Unit has spacious 86sf Lanai (veranda) with beautiful mountain view. Unit comes with 1 assigned parking. Wonderful opportunity for either for your dream island home or for your investment. Don't miss out ! It is a Leasehold property as Discovery Bay Condominium Association owns 96.893% of beneficial fee interest. Fee purchase opportunity is available for \$129,816 if applied before July 31, 2025 but will increase 30% to \$168,734 beginning on August 1, 2025. Please go to Discovery Bay Condominium Website for more information. **Sale Conditions:** None **Schools:** [Jefferson](#), [Washington](#), [Kaimuki](#) * [Request Showing](#), [Photos](#), [History](#), [Maps](#), [Deed](#), [Watch List](#), [Tax Info](#)





| Address | Price | Bd & Bth | Living / Avg. | Land Avg. | Lanai | Occ. | FL | DOM |
|---|---------------------|----------|---------------|--------------|-------|------|----|-----|
| 1778 Ala Moana Boulevard 2918 | \$305,000 LH | 1 & 1/0 | 683 \$447 | 84,463 \$4 | 86 | 20% | 29 | 73 |

| Address | Tax Maint. Ass. | Assessed Land | Assessed Building | Assessed Total | Ratio | Year & Remodeled |
|---|---------------------|---------------|-------------------|----------------|-------|------------------|
| 1778 Ala Moana Boulevard 2918 | \$167 \$917 \$0 | \$23,700 | \$562,500 | \$586,200 | 52% | 1977 & NA |

[1778 Ala Moana Boulevard 2918](#) - MLS#: [202408666](#) - Original price was \$310,000 - Discovery Bay Condominium is situated in very convenient part of Waikiki, only about 10 minute walk south to surfer popular Kahanamoku Beach, about 10 minute walk west to world famous Ala Moana Center and to all the world class shops and restaurants. Unit has spacious 86sf Lanai (veranda) with beautiful mountain view. Unit comes with 1 assigned parking. Wonderful opportunity for either for your dream island home or for your investment. Don't miss out ! It is a Leasehold property as Discovery Bay Condominium Association owns 96.893% of beneficial fee interest. Fee purchase opportunity is available for \$129,816 if applied before July 31, 2025 but will increase 30% to \$168,734 beginning on August 1, 2025. Please go to Discovery Bay Condominium Website for more information. **Region:** Metro **Neighborhood:** Waikiki **Condition:** Above Average **Parking:** Assigned, Open - 1, Secured Entry, Street **Total Parking:** 1 **View:** City, Mountain **Frontage:** Other **Pool:** **Zoning:** X2 - Apartment Precinct **Sale Conditions:** None **Schools:** [Jefferson](#), [Washington](#), [Kaimuki](#) * [Request Showing](#), [Photos](#), [History](#), [Maps](#), [Deed](#), [Watch List](#), [Tax Info](#)

DOM = Days on Market, Occ. = Occupancy, FL = Floor Number