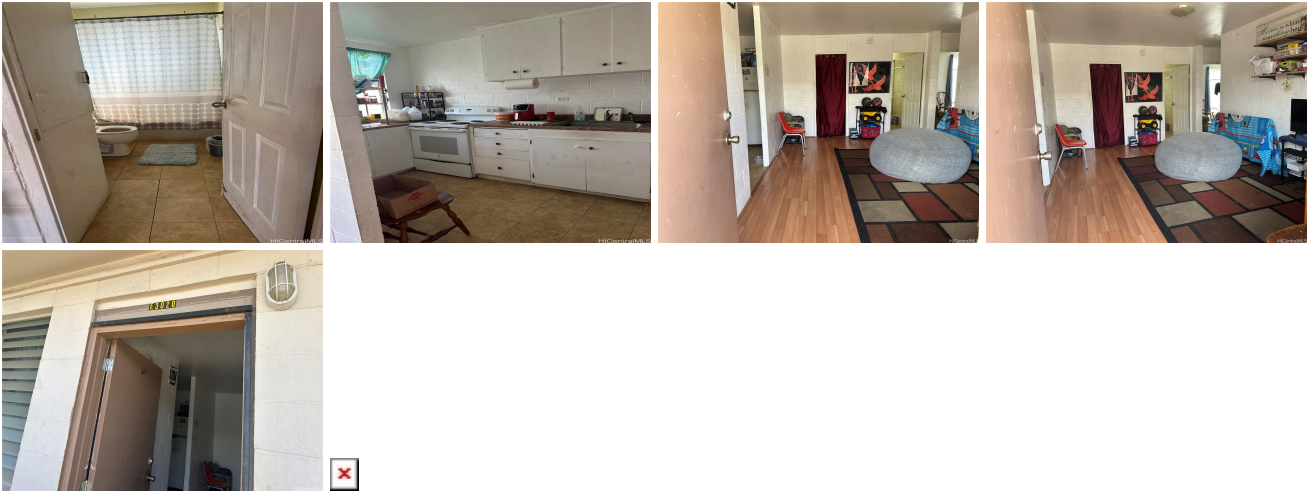


Su Casa 94-245 Leowahine Street Unit 3020, Waipahu 96797 * Su Casa * \$280,000 *

Originally \$300,000

Beds: 3	MLS#: 202408776, FS	Year Built: 1968
Bath: 1/0	Status: Active	Remodeled:
Living Sq. Ft.: 799	List Date & DOM: 04-22-2024 & 84	Total Parking: 1
Land Sq. Ft.: 165,746	Condition: Fair	Assessed Value
Lanai Sq. Ft.: 0	Frontage:	Building: \$200,700
Sq. Ft. Other: 0	Tax/Year: \$79/2024	Land: \$102,800
Total Sq. Ft. 799	Neighborhood: Waipahu-lower	Total: \$303,500
Maint./Assoc. \$472 / \$0	Flood Zone : Zone D - Tool	Stories / CPR: Three / No
Parking: Assigned, Open - 1	Frontage:	
Zoning : 12 - A-2 Medium Density Apartme	View: Mountain	

Public Remarks: Priced to sell, closed to Shops, Bus Stops and Restaurants. Rarely available 3 bedrooms, 1 full bath, 1 assigned open parking. It's gated. **Sale Conditions:** None **Schools:** [Waipahu](#), [Waipahu](#), [Waipahu](#) * [Request Showing](#), [Photos](#), [History](#), [Maps](#), [Deed](#), [Watch List](#), [Tax Info](#)



Address	Price	Bd & Bth	Living / Avg.	Land Avg.	Lanai	Occ.	FL	DOM
94-245 Leowahine Street 3020	\$280,000	3 & 1/0	799 \$350	165,746 \$2	0	60%	3	84

Address	Tax Maint. Ass.	Assessed Land	Assessed Building	Assessed Total	Ratio	Year & Remodeled
94-245 Leowahine Street 3020	\$79 \$472 \$0	\$102,800	\$200,700	\$303,500	92%	1968 & NA

[94-245 Leowahine Street 3020](#) - MLS#: [202408776](#) - Original price was \$300,000 - Priced to sell, closed to Shops, Bus Stops and Restaurants. Rarely available 3 bedrooms, 1 full bath, 1 assigned open parking. It's gated. **Region:** Waipahu **Neighborhood:** Waipahu-lower **Condition:** Fair **Parking:** Assigned, Open - 1 **Total Parking:** 1 **View:** Mountain **Frontage:** **Pool:** **Zoning:** 12 - A-2 Medium Density Apartme **Sale Conditions:** None **Schools:** [Waipahu](#), [Waipahu](#), [Waipahu](#) * [Request Showing](#), [Photos](#), [History](#), [Maps](#), [Deed](#), [Watch List](#), [Tax Info](#)

DOM = Days on Market, Occ. = Occupancy, FL = Floor Number