

Iolani Court Plaza 2499 Kapiolani Boulevard Unit 3001, Honolulu 96826 * Iolani Court Plaza

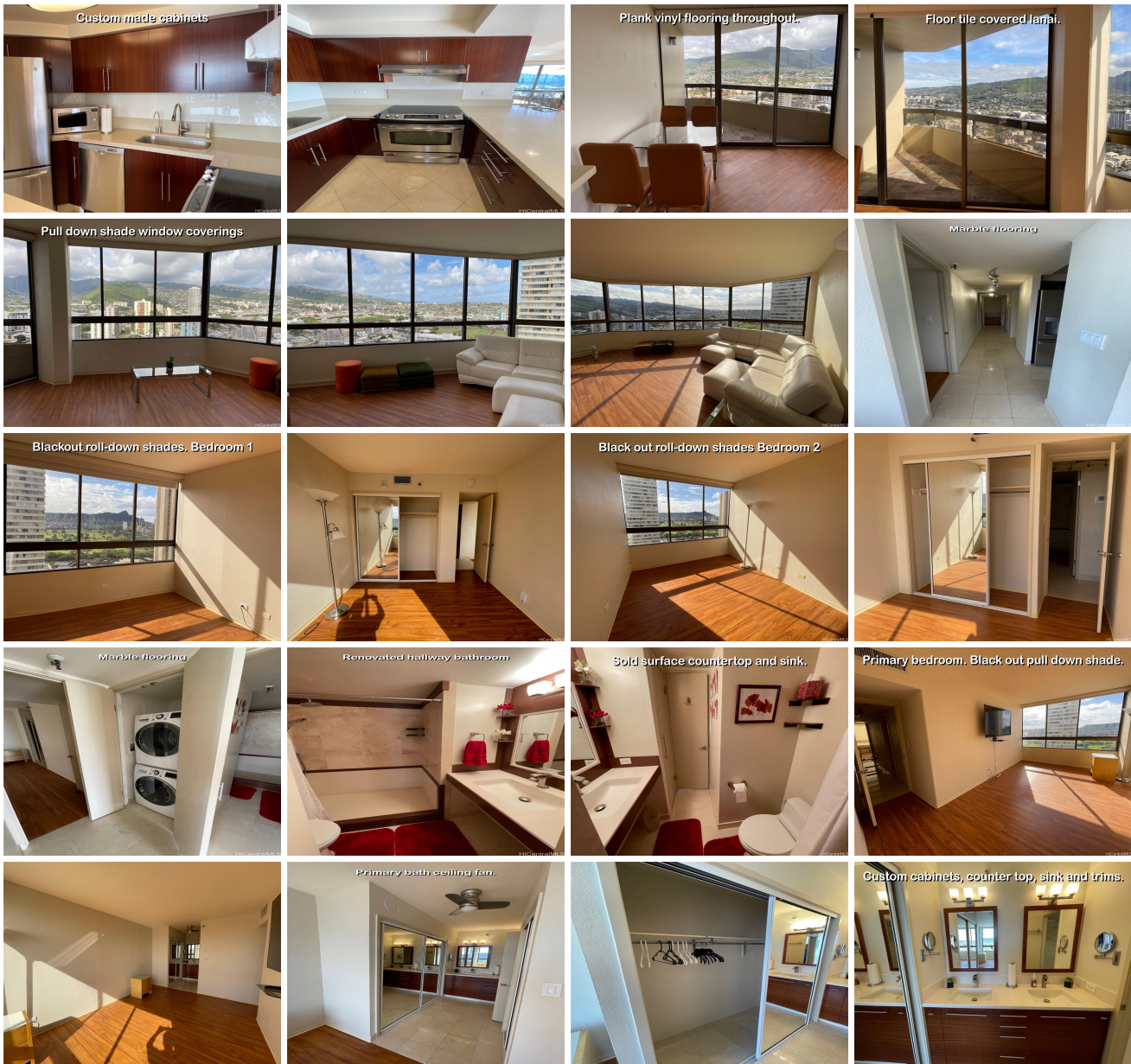
*** \$825,000**

Beds: 3	MLS#: 202408821, FS	Year Built: 1979
Bath: 2/0	Status: Active	Remodeled:
Living Sq. Ft.: 1,168	List Date & DOM: 05-18-2024 & 40	Total Parking: 2
Land Sq. Ft.: 95,048	Condition: Excellent, Above Average	Assessed Value
Lanai Sq. Ft.: 63	Frontage:	Building: \$673,900
Sq. Ft. Other: 0	Tax/Year: \$223/2024	Land: \$89,600
Total Sq. Ft. 1,231	Neighborhood: Kapiolani	Total: \$763,500
Maint./Assoc. \$1,911 / \$0	Flood Zone : Zone X - Tool	Stories / CPR: 21+ / No
Parking: Assigned, Covered - 2, Garage, Guest, Secured Entry	Frontage:	

[Zoning](#): **13 - A-3 High Density Apartment**

View: **Cemetery, City, Coastline, Diamond Head, Golf Course, Mountain, Ocean, Sunrise**

Public Remarks: Breathtaking city and mountain views, bright and breezy home! The perfect blend of comfort and convenience in this spacious three-bedroom, two-bath unit, and 2 Parking one parking stall is larger than the other. Fantastic amenities include tennis courts, heated pools, saunas, hot tubs, gas BBQ grills, a rec room, putting green, 24-hour security, 20 guest stalls, Mini Mart, etc. Maintenance Fees include AC Central, Electricity, Hot Water, Water, and Sewer. There is also internet access, which provides cable service. It is convenient and has easy access to the freeway, Waikiki, Ala Moana, and schools. Your dream home awaits. **Sale Conditions:** None **Schools:** [Ala Wai](#), [Washington](#), [Kaimuki](#) * [Request Showing](#), [Photos](#), [History](#), [Maps](#), [Deed](#), [Watch List](#), [Tax Info](#)





Address	Price	Bd & Bth	Living / Avg.	Land Avg.	Lanai	Occ.	FL	DOM
2499 Kapiolani Boulevard 3001	\$825,000	3 & 2/0	1,168 \$706	95,048 \$9	63	57%	30	40

Address	Tax Maint. Ass.	Assessed Land	Assessed Building	Assessed Total	Ratio	Year & Remodeled
2499 Kapiolani Boulevard 3001	\$223 \$1,911 \$0	\$89,600	\$673,900	\$763,500	108%	1979 & NA

[2499 Kapiolani Boulevard 3001](#) - MLS#: [202408821](#) - Breathtaking city and mountain views, bright and breezy home! The perfect blend of comfort and convenience in this spacious three-bedroom, two-bath unit, and 2 Parking one parking stall is larger than the other. Fantastic amenities include tennis courts, heated pools, saunas, hot tubs, gas BBQ grills, a rec room, putting green, 24-hour security, 20 guest stalls, Mini Mart, etc. Maintenance Fees include AC Central, Electricity, Hot Water, Water, and Sewer. There is also internet access, which provides cable service. It is convenient and has easy access to the freeway, Waikiki, Ala Moana, and schools. Your dream home awaits. **Region:** Metro **Neighborhood:** Kapiolani **Condition:** Excellent, Above Average **Parking:** Assigned, Covered - 2, Garage, Guest, Secured Entry **Total Parking:** 2 **View:** Cemetery, City, Coastline, Diamond Head, Golf Course, Mountain, Ocean, Sunrise **Frontage:** **Pool:** **Zoning:** 13 - A-3 High Density Apartment **Sale Conditions:** None **Schools:** [Ala Wai](#), [Washington](#), [Kaimuki](#) * [Request Showing](#), [Photos](#), [History](#), [Maps](#), [Deed](#), [Watch List](#), [Tax Info](#)

DOM = Days on Market, Occ. = Occupancy, FL = Floor Number