

**Leisure Heritage 311 Ohua Avenue Unit 1104D, Honolulu 96815 \* Leisure Heritage \***

**\$625,000 \* Originally \$635,000**

Beds: **2**  
Bath: **2/0**  
Living Sq. Ft.: **955**  
Land Sq. Ft.: **21,432**  
Lanai Sq. Ft.: **131**  
Sq. Ft. Other: **0**  
Total Sq. Ft. **1,086**  
Maint./Assoc. **\$1,318 / \$0**  
Parking: **Assigned**

MLS#: **202408838, FS**  
Status: **Active**  
List Date & DOM: **04-23-2024 & 85**  
Condition: **Excellent**  
Frontage: **Other**  
Tax/Year: **\$122/2023**  
Neighborhood: **Waikiki**  
[Flood Zone](#): **Zone AE - Tool**

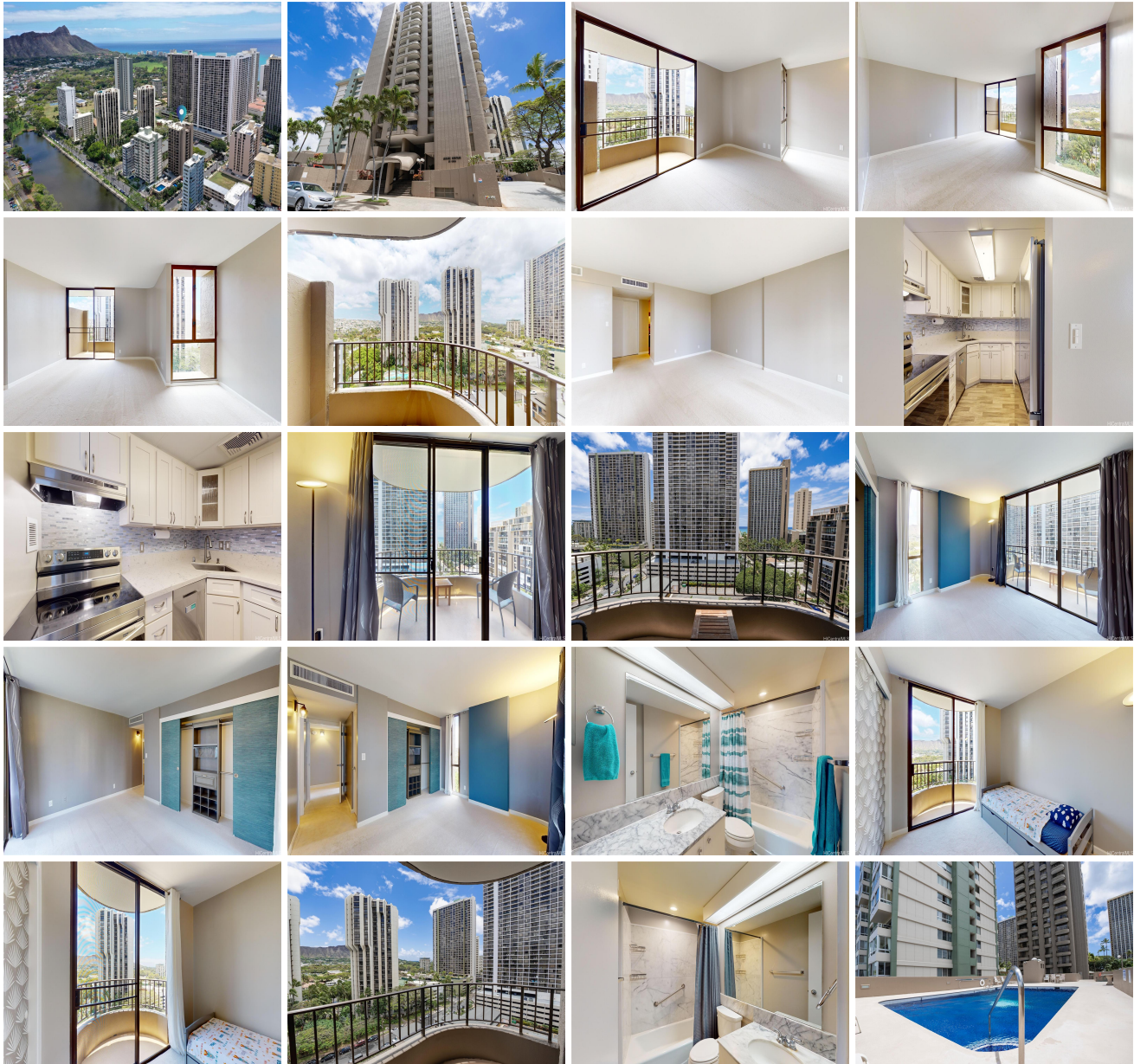
Year Built: **1974**  
Remodeled: **2024**  
Total Parking: **1**  
[Assessed Value](#)  
Building: **\$553,600**  
Land: **\$116,000**  
Total: **\$669,600**  
Stories / CPR: **One / No**

[Zoning](#): **X2 - Apartment Precinct**

Frontage: **Other**

View: **Diamond Head, Mountain, Ocean, Sunrise**

**Public Remarks:** SELLER IS OFFERING A \$10,000 CREDIT FOR FULL PRICED OFFERS. Discover paradise in the heart of Waikiki! This incredible 2 bed/2 bath condo features a newly renovated kitchen with new floors, quartz counters & newer cabinets, custom-designed central AC system, fresh paint and more! With over 950 sq ft of interior living space and three lanais, this is the largest Diamond Head-facing 2 bedroom layout in the building. Maintenance fee includes Electricity, AC, hot water, sewer, water, internet, cable (Disney+ and 1 DVR unit included). Take in the Diamond Head, ocean, and city lights views in this perfectly located condo just 2 blocks from the world famous Waikiki Beach, Kapiolani Park, eateries, nightlife, shopping and more! **DO NOT MISS THIS OPPORTUNITY** to own a piece of paradise! **Sale Conditions:** None **Schools:** , , \* [Request Showing](#), [Photos](#), [History](#), [Maps](#), [Deed](#), [Watch List](#), [Tax Info](#)





Address	Price	Bd & Bth	Living / Avg.	Land   Avg.	Lanai	Occ.	FL	DOM
<a href="#">311 Ohua Avenue 1104D</a>	<b>\$625,000</b>	2 & 2/0	955   \$654	21,432   \$29	131	57%	11	85

Address	Tax   Maint.   Ass.	Assessed Land	Assessed Building	Assessed Total	Ratio	Year & Remodeled
<a href="#">311 Ohua Avenue 1104D</a>	\$122   \$1,318   \$0	\$116,000	\$553,600	\$669,600	93%	1974 & 2024

[311 Ohua Avenue 1104D](#) - MLS#: [202408838](#) - Original price was \$635,000 - SELLER IS OFFERING A \$10,000 CREDIT FOR FULL PRICED OFFERS. Discover paradise in the heart of Waikiki! This incredible 2 bed/2 bath condo features a newly renovated kitchen with new floors, quartz counters & newer cabinets, custom-designed central AC system, fresh paint and more! With over 950 sq ft of interior living space and three lanais, this is the largest Diamond Head-facing 2 bedroom layout in the building. Maintenance fee includes Electricity, AC, hot water, sewer, water, internet, cable (Disney+ and 1 DVR unit included). Take in the Diamond Head, ocean, and city lights views in this perfectly located condo just 2 blocks from the world famous Waikiki Beach, Kapiolani Park, eateries, nightlife, shopping and more! DO NOT MISS THIS OPPORTUNITY to own a piece of paradise! **Region:** Metro **Neighborhood:** Waikiki **Condition:** Excellent **Parking:** Assigned **Total Parking:** 1 **View:** Diamond Head, Mountain, Ocean, Sunrise **Frontage:** Other **Pool:** **Zoning:** X2 - Apartment Precinct **Sale Conditions:** None **Schools:** , , \* [Request Showing](#), [Photos](#), [History](#), [Maps](#), [Deed](#), [Watch List](#), [Tax Info](#)

DOM = Days on Market, Occ. = Occupancy, FL = Floor Number