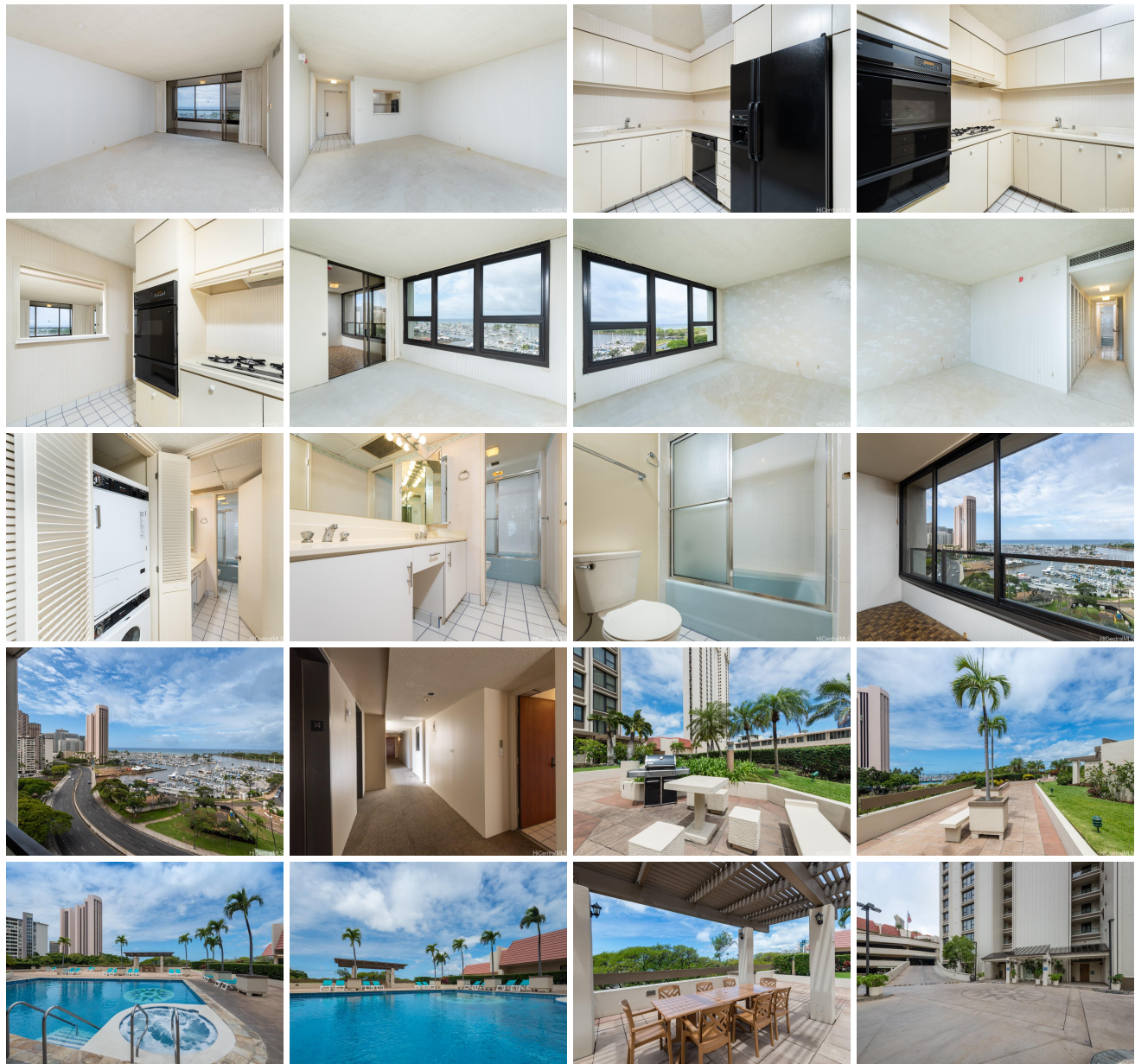


# **Yacht Harbor Towers 1600 Ala Moana Boulevard Unit 1406, Honolulu 96815 \* \$630,000**

Beds: <b>1</b>	MLS#: <b>202408847, FS</b>	Year Built: <b>1973</b>
Bath: <b>1/0</b>	Status: <b>Active</b>	Remodeled:
Living Sq. Ft.: <b>842</b>	List Date & DOM: <b>04-29-2024 &amp; 78</b>	Total Parking: <b>1</b>
Land Sq. Ft.: <b>138,216</b>	Condition: <b>Average</b>	<a href="#">Assessed Value</a>
Lanai Sq. Ft.: <b>124</b>	Frontage: <b>Other</b>	Building: <b>\$642,500</b>
Sq. Ft. Other: <b>0</b>	Tax/Year: <b>\$200/2023</b>	Land: <b>\$43,000</b>
Total Sq. Ft. <b>966</b>	Neighborhood: <b>Ala Moana</b>	Total: <b>\$685,500</b>
Maint./Assoc. <b>\$1,315 / \$0</b>	<a href="#">Flood Zone</a> : <b>Zone X - Tool</b>	Stories / CPR: <b>21+ / No</b>
Parking: <b>Assigned, Covered - 1</b>	Frontage: <b>Other</b>	
<a href="#">Zoning</a> : <b>12 - A-2 Medium Density Apartme</b>	View: <b>City, Coastline, Ocean, Sunset</b>	

**Public Remarks:** This spacious 1-bedroom unit boasts stunning Pacific Ocean, Ala Wai Yacht Harbor and lush Ala Moana Beach Park views, enjoyed from the comfort of an enclosed lanai. Recently renovated throughout the entire building boasts upgraded features including a refreshed lobby, elevators, plumbing, spalling repair, exterior wall painting, and individual apartment windows, ensuring a modern and well-maintained living environment. With only a \$206 per month special assessment remaining until 2032, you'll enjoy the benefits of a fully renovated building without the hassle. Plus, lots of amenities including a pickleball court, pool and jacuzzi. Conveniently located near Ala Moana Center and Kakaako, indulge in shopping and fine dining experiences just moments away. While the unit requires some TLC, it presents an excellent opportunity to personalize and create your dream coastal retreat. Don't miss your chance to experience luxury living with convenience at Yacht Harbor Tower 1406. Schedule your viewing today! **Sale Conditions:** None **Schools:** [Ala Wai](#), [Washington](#), [Kaimuki](#) \* [Request Showing](#), [Photos](#), [History](#), [Maps](#), [Deed](#), [Watch List](#), [Tax Info](#)





Address	Price	Bd & Bth	Living / Avg.	Land   Avg.	DOM
<a href="#">1600 Ala Moana Boulevard 1406</a>	<b>\$630,000</b>	1 & 1/0	842   \$748	138,216   \$5	78

Address	Tax   Maint.   Ass.	Assessed Land	Assessed Building	Assessed Total	Ratio	Year & Remodeled
<a href="#">1600 Ala Moana Boulevard 1406</a>	\$200   \$1,315   \$0	\$43,000	\$642,500	\$685,500	92%	1973 & NA

[1600 Ala Moana Boulevard 1406](#) - MLS#: [202408847](#) - This spacious 1-bedroom unit boasts stunning Pacific Ocean, Ala Wai Yacht Harbor and lush Ala Moana Beach Park views, enjoyed from the comfort of an enclosed lanai. Recently renovated throughout the entire building boasts upgraded features including a refreshed lobby, elevators, plumbing, spalling repair, exterior wall painting, and individual apartment windows, ensuring a modern and well-maintained living environment. With only a \$206 per month special assessment remaining until 2032, you'll enjoy the benefits of a fully renovated building without the hassle. Plus, lots of amenities including a pickleball court, pool and jacuzzi. Conveniently located near Ala Moana Center and Kakaako, indulge in shopping and fine dining experiences just moments away. While the unit requires some TLC, it presents an excellent opportunity to personalize and create your dream coastal retreat. Don't miss your chance to experience luxury living with convenience at Yacht Harbor Tower 1406. Schedule your viewing today! **Region:** Metro **Neighborhood:** Ala Moana **Condition:** Average **Parking:** Assigned, Covered - 1 **Total Parking:** 1 **View:** City, Coastline, Ocean, Sunset **Frontage:** Other **Pool:** **Zoning:** 12 - A-2 Medium Density Apartme **Sale Conditions:** None **Schools:** [Ala Wai](#), [Washington](#), [Kaimuki](#) \* [Request Showing](#), [Photos](#), [History](#), [Maps](#), [Deed](#), [Watch List](#), [Tax Info](#)

DOM = Days on Market