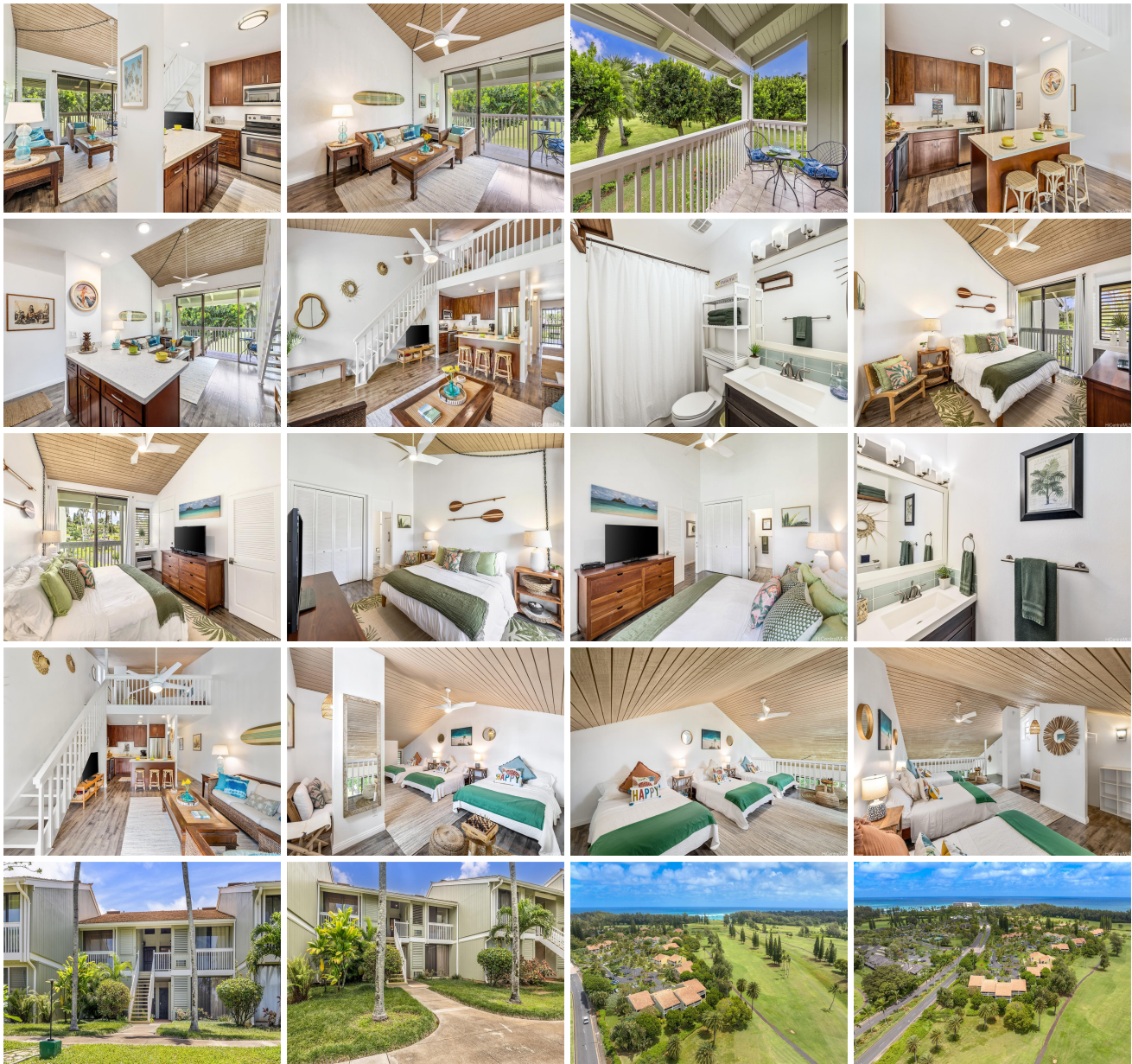


**Kuilima Ests East 57-120 Lalo Kuilima Way Unit 110, Kahuku 96731 \* Kuilima Ests East \***

**\$1,748,000 \* Originally \$1,888,000**

Beds: <b>1</b>	MLS#: <b><a href="#">202408894</a>, FS</b>	Year Built: <b>1975</b>
Bath: <b>2/0</b>	Status: <b>Active</b>	Remodeled: <b>2016</b>
Living Sq. Ft.: <b>738</b>	List Date & DOM: <b>05-08-2024 &amp; 70</b>	Total Parking: <b>1</b>
Land Sq. Ft.: <b>647,519</b>	Condition: <b>Above Average</b>	<a href="#">Assessed Value</a>
Lanai Sq. Ft.: <b>127</b>	Frontage: <b>Golf Course</b>	Building: <b>\$749,300</b>
Sq. Ft. Other: <b>0</b>	Tax/Year: <b>\$291/2023</b>	Land: <b>\$263,400</b>
Total Sq. Ft. <b>865</b>	Neighborhood: <b>Kuilima</b>	Total: <b>\$1,012,700</b>
Maint./Assoc. <b>\$838 / \$0</b>	<a href="#">Flood Zone</a> : <b>Zone AE - Tool</b>	Stories / CPR: <b>/ No</b>
Parking: <b>Assigned, Open - 1</b>	Frontage: <b>Golf Course</b>	
<a href="#">Zoning</a> : <b>11 - A-1 Low Density Apartment</b>	View: <b>Golf Course</b>	

**Public Remarks:** Discover the allure of Oahu's north shore, where each sunrise paints the sky in golden hues and every wave whispers tales of adventure. Nestled beside the newly revamped Turtle Bay resort, this sanctuary offers the essence of Hawaiian paradise. Indulge in sun-soaked days and golf escapades on the Fazio course. Retreat to a spacious one-bedroom, two-bathroom haven with a loft featuring three full-size beds. Feel the tropical breeze and savor ocean dips just steps away. Enjoy gated security, manicured landscapes, pools, BBQ's, tennis courts, and all overseen by a resident manager. One of the few legal vacation rentals on the North Shore, primed for short-term stays. Vaulted ceiling leaves room for a generous-sized loft sleeping area. This unit is booked regularly and challenging to get into. Added bonus, bedroom and bath can be a separate lockout unit. Total square footage is approximately 1,169, this includes the 322 s.q. ft. loft, non-permitted. Financials upon request. **Sale Conditions:** None **Schools:** , , \* [Request Showing](#), [Photos](#), [History](#), [Maps](#), [Deed](#), [Watch List](#), [Tax Info](#)





Address	Price	Bd & Bth	Living / Avg.	Land   Avg.	Lanai	Occ.	FL	DOM
<a href="#">57-120 Lalo Kuilima Way 110</a>	<b>\$1,748,000</b>	1 & 2/0	738   \$2,369	647,519   \$3	127	20%	2	70

Address	Tax   Maint.   Ass.	Assessed Land	Assessed Building	Assessed Total	Ratio	Year & Remodeled
<a href="#">57-120 Lalo Kuilima Way 110</a>	\$291   \$838   \$0	\$263,400	\$749,300	\$1,012,700	173%	1975 & 2016

[57-120 Lalo Kuilima Way 110](#) - MLS#: [202408894](#) - Original price was \$1,888,000 - Discover the allure of Oahu's north shore, where each sunrise paints the sky in golden hues and every wave whispers tales of adventure. Nestled beside the newly revamped Turtle Bay resort, this sanctuary offers the essence of Hawaiian paradise. Indulge in sun-soaked days and golf escapades on the Fazio course. Retreat to a spacious one-bedroom, two-bathroom haven with a loft featuring three full-size beds. Feel the tropical breeze and savor ocean dips just steps away. Enjoy gated security, manicured landscapes, pools, BBQ's, tennis courts, and all overseen by a resident manager. One of the few legal vacation rentals on the North Shore, primed for short-term stays. Vaulted ceiling leaves room for a generous-sized loft sleeping area. This unit is booked regularly and challenging to get into. Added bonus, bedroom and bath can be a separate lockout unit. Total square footage is approximately 1,169, this includes the 322 s.q. ft. loft, non-permitted. Financials upon request. **Region:** North Shore **Neighborhood:** Kuilima **Condition:** Above Average **Parking:** Assigned, Open - 1 **Total Parking:** 1 **View:** Golf Course **Frontage:** Golf Course **Pool:** **Zoning:** 11 - A-1 Low Density Apartment **Sale Conditions:** None **Schools:** , , \* [Request Showing](#), [Photos](#), [History](#), [Maps](#), [Deed](#), [Watch List](#), [Tax Info](#)

DOM = Days on Market, Occ. = Occupancy, FL = Floor Number