

Banyan Tree Plaza 1212 Punahou Street Unit 2208, Honolulu 96826 * \$688,000 * Originally

\$728,000

Beds: **3**
 Bath: **2/0**
 Living Sq. Ft.: **1,514**
 Land Sq. Ft.: **92,478**
 Lanai Sq. Ft.: **0**
 Sq. Ft. Other: **0**
 Total Sq. Ft. **1,514**
 Maint./Assoc. **\$1,553 / \$0**

MLS#: **202408921, FS**
 Status: **Active**
 List Date & DOM: **04-29-2024 & 75**
 Condition: **Excellent**
 Frontage: **Other**
 Tax/Year: **\$146/2023**
 Neighborhood: **Punahou**
[Flood Zone](#): **Zone X - Tool**

Year Built: **1974**
 Remodeled: **2014**
 Total Parking: **1**
[Assessed Value](#)
 Building: **\$508,300**
 Land: **\$103,600**
 Total: **\$611,900**
 Stories / CPR: **21+ / No**

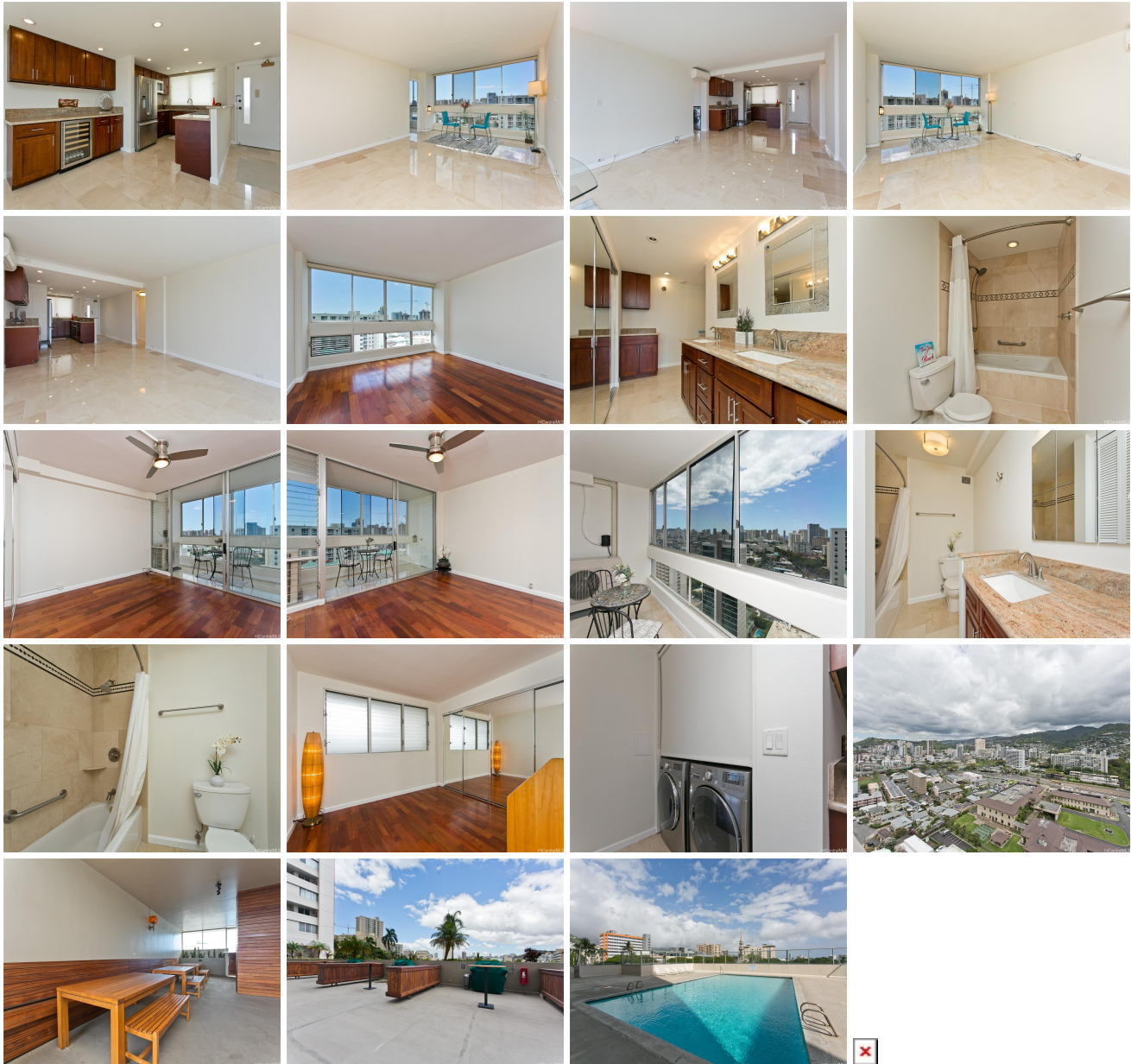
Parking: **Assigned, Covered - 1**

[Zoning](#): **13 - A-3 High Density Apartment**

Frontage: **Other**

View: **City, Diamond Head, Other**

Public Remarks: Best opportunity in town. Highly desirable 3 bedroom, 2 bathroom unit with 1 assigned parking stall in well maintained and secured Banyan Tree Plaza. This freshly painted unit has been nicely renovated over the years with marble and hardwoods floors and enclosed lanai. Brand new remote operated blinds in the living room and lanai. Conveniently located near stores, schools, hospitals, busline, the University of Hawaii, with easy access to freeway entrance, Kakaako, Waikiki & Ala Moana. The building offers many amenities including a salt water swimming pool, BBQ with covered dining area, surf storage, 24/7 security, resident manager and ample guest parking. Must see!! **Sale Conditions:** None **Schools:** [Kaahumanu](#), [Washington](#), [Mckinley](#) * [Request Showing](#), [Photos](#), [History](#), [Maps](#), [Deed](#), [Watch List](#), [Tax Info](#)



Address	Price	Bd & Bth	Living / Avg.	Land Avg.	DOM
---------	-------	----------	---------------	-------------	-----

1212 Punahou Street 2208	\$688,000	3 & 2/0	1,514 \$454	92,478 \$7	75
--	------------------	---------	---------------	--------------	----

Address	Tax Maint. Ass.	Assessed Land	Assessed Building	Assessed Total	Ratio	Year & Remodeled
1212 Punahou Street 2208	\$146 \$1,553 \$0	\$103,600	\$508,300	\$611,900	112%	1974 & 2014

[1212 Punahou Street 2208](#) - MLS#: [202408921](#) - Original price was \$728,000 - Best opportunity in town. Highly desirable 3 bedroom, 2 bathroom unit with 1 assigned parking stall in well maintained and secured Banyan Tree Plaza. This freshly painted unit has been nicely renovated over the years with marble and hardwoods floors and enclosed lanai. Brand new remote operated blinds in the living room and lanai. Conveniently located near stores, schools, hospitals, busline, the University of Hawaii, with easy access to freeway entrance, Kakaako, Waikiki & Ala Moana. The building offers many amenities including a salt water swimming pool, BBQ with covered dining area, surf storage, 24/7 security, resident manager and ample guest parking. Must see!! **Region:** Metro **Neighborhood:** Punahou **Condition:** Excellent **Parking:** Assigned, Covered - 1 **Total Parking:** 1 **View:** City, Diamond Head, Other **Frontage:** Other **Pool:** **Zoning:** 13 - A-3 High Density Apartment **Sale Conditions:** None **Schools:** [Kaahumanu](#), [Washington](#), [Mckinley](#) * [Request Showing](#), [Photos](#), [History](#), [Maps](#), [Deed](#), [Watch List](#), [Tax Info](#)

DOM = Days on Market