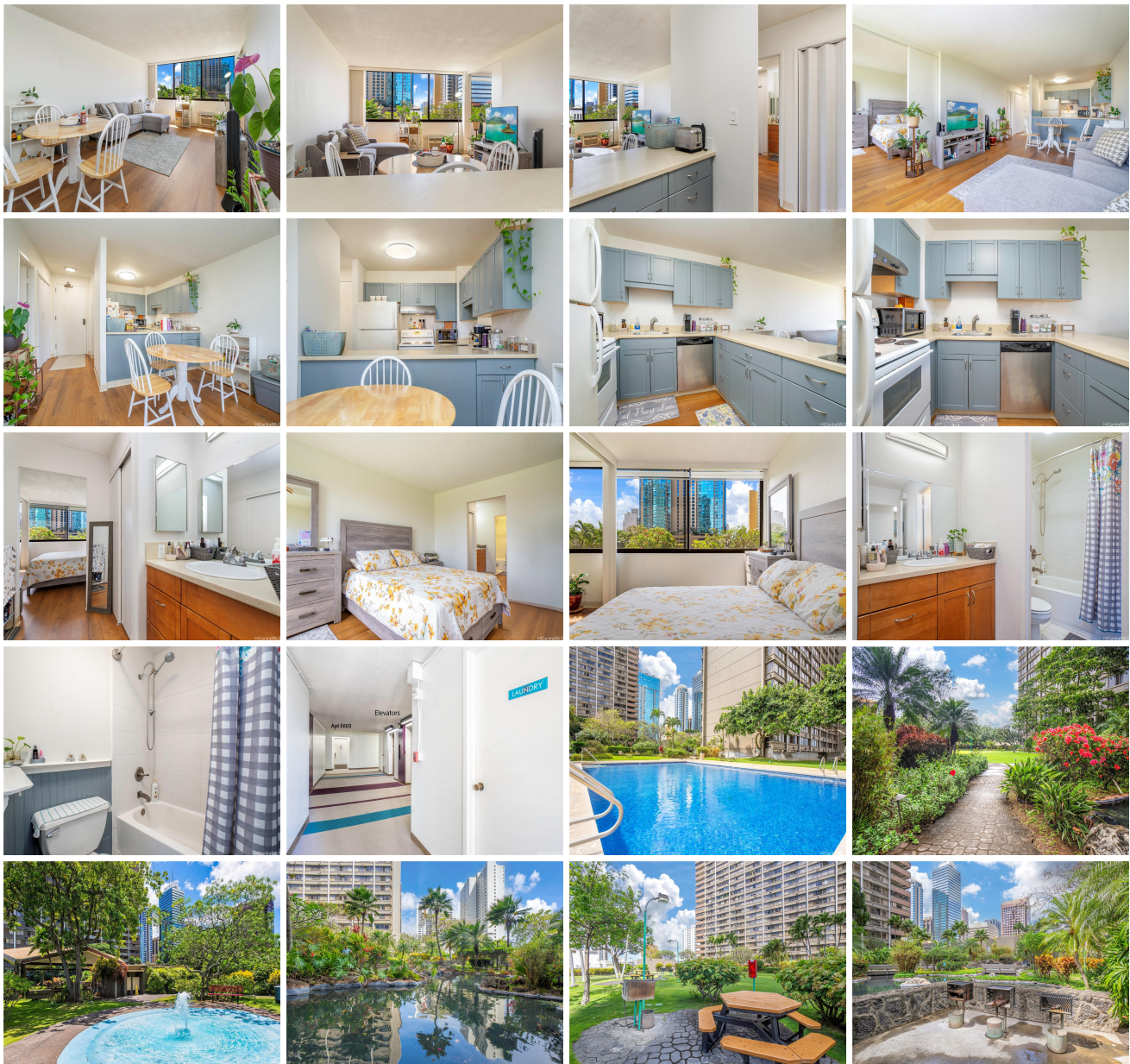


**Kukui Plaza 1255 Nuuanu Avenue Unit E603, Honolulu 96817 \* Kukui Plaza \* \$380,000 \***

**Originally \$385,000**

Beds: <b>1</b>	MLS#: <b>202408958, FS</b>	Year Built: <b>1976</b>
Bath: <b>1/0</b>	Status: <b>Active</b>	Remodeled: <b>2023</b>
Living Sq. Ft.: <b>615</b>	List Date & DOM: <b>04-30-2024 &amp; 78</b>	Total Parking: <b>1</b>
Land Sq. Ft.: <b>221,459</b>	Condition: <b>Excellent</b>	<a href="#">Assessed Value</a>
Lanai Sq. Ft.: <b>0</b>	Frontage:	Building: <b>\$344,100</b>
Sq. Ft. Other: <b>0</b>	Tax/Year: <b>\$102/2023</b>	Land: <b>\$53,500</b>
Total Sq. Ft. <b>615</b>	Neighborhood: <b>Downtown</b>	Total: <b>\$397,600</b>
Maint./Assoc. <b>\$499 / \$0</b>	<a href="#">Flood Zone</a> : <b>Zone X - Tool</b>	Stories / CPR: / <b>No</b>
Parking: <b>Assigned, Covered - 1</b>	Frontage:	
<a href="#">Zoning</a> : <b>34 - BMX-4 Central Business Mix</b>	View: <b>City, Garden</b>	

**Public Remarks:** Welcome home to this charming 1 bedroom, 1 bathroom condominium nestled in the heart of downtown Honolulu. Recently renovated kitchen and bathroom, complete with luxury vinyl plank flooring throughout, offering both durability and style. Unit includes one secured parking stall close to building entrance point and security. Discover Kukui Plaza amenities lush garden decks invite you to unwind amidst nature's tranquility. Entertain at the BBQ areas, meander along scenic walking paths, or simply relax by the pools and serene koi ponds. Pavilion offers a versatile space for gatherings and events. Conveniently located with easy freeway access, short stroll to local farmers markets, historic Hawaii Theater, grocery stores, restaurants and more. **Sale Conditions:** None **Schools:** , , \* [Request Showing](#), [Photos](#), [History](#), [Maps](#), [Deed](#), [Watch List](#), [Tax Info](#)





Address	Price	Bd & Bth	Living / Avg.	Land   Avg.	Lanai	Occ.	FL	DOM
<a href="#">1255 Nuuanu Avenue E603</a>	<b>\$380,000</b>	1 & 1/0	615   \$618	221,459   \$2	0	48%	6	78

Address	Tax   Maint.   Ass.	Assessed Land	Assessed Building	Assessed Total	Ratio	Year & Remodeled
<a href="#">1255 Nuuanu Avenue E603</a>	\$102   \$499   \$0	\$53,500	\$344,100	\$397,600	96%	1976 & 2023

[1255 Nuuanu Avenue E603](#) - MLS#: [202408958](#) - Original price was \$385,000 - Welcome home to this charming 1 bedroom, 1 bathroom condominium nestled in the heart of downtown Honolulu. Recently renovated kitchen and bathroom, complete with luxury vinyl plank flooring throughout, offering both durability and style. Unit includes one secured parking stall close to building entrance point and security. Discover Kukui Plaza amenities lush garden decks invite you to unwind amidst nature's tranquility. Entertain at the BBQ areas, meander along scenic walking paths, or simply relax by the pools and serene koi ponds. Pavilion offers a versatile space for gatherings and events. Conveniently located with easy freeway access, short stroll to local farmers markets, historic Hawaii Theater, grocery stores, restaurants and more. **Region:** Metro  
**Neighborhood:** Downtown **Condition:** Excellent **Parking:** Assigned, Covered - 1 **Total Parking:** 1 **View:** City, Garden  
**Frontage:** **Pool:** **Zoning:** 34 - BMX-4 Central Business Mix **Sale Conditions:** None **Schools:** , , \* [Request Showing](#), [Photos](#), [History](#), [Maps](#), [Deed](#), [Watch List](#), [Tax Info](#)

DOM = Days on Market, Occ. = Occupancy, FL = Floor Number