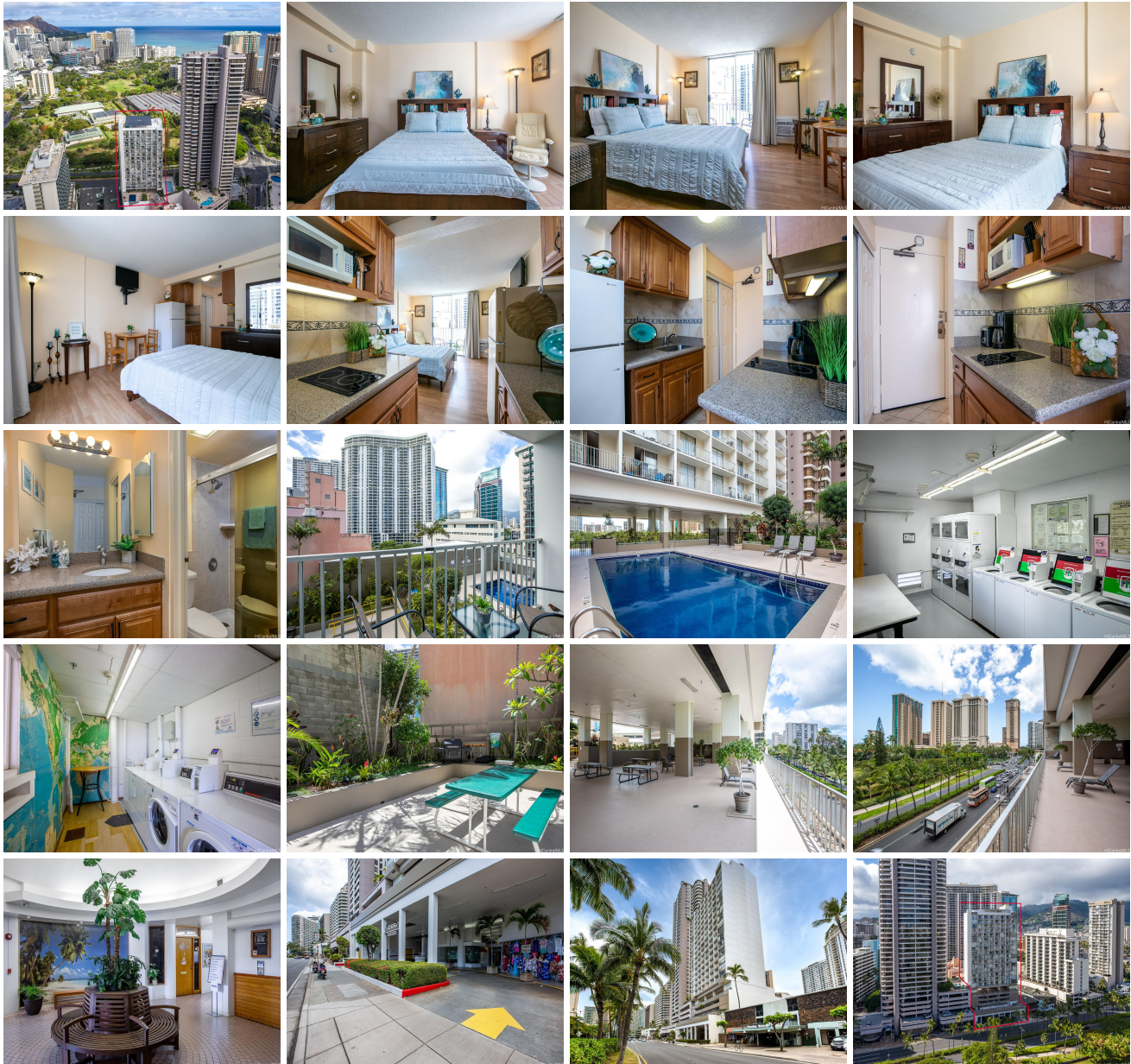


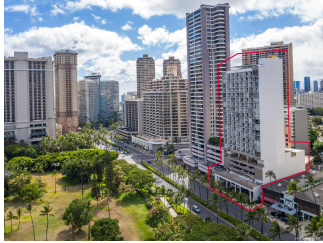
Inn On The Park 1920 Ala Moana Boulevard Unit 610, Honolulu 96815 * \$85,000 *

Originally \$89,000

Beds: 0	MLS#: 202408971, LH	Year Built: 1978
Bath: 1/0	Status: Active	Remodeled: 2011
Living Sq. Ft.: 320	List Date & DOM: 04-25-2024 & 82	Total Parking: 0
Land Sq. Ft.: 0	Condition: Excellent, Above Average, Average	Assessed Value
Lanai Sq. Ft.: 41	Frontage: Other	Building: \$273,100
Sq. Ft. Other: 0	Tax/Year: \$96/2024	Land: \$56,100
Total Sq. Ft. 361	Neighborhood: Waikiki	Total: \$329,200
Maint./Assoc. \$654 / \$0	Flood Zone : Zone AO - Tool	Stories / CPR: 21+ / No
Parking: None, Guest, Open - 1, Other	Frontage: Other	
Zoning : X2 - Apartment Precinct	View: City, Mountain	

Public Remarks: PRICE IMPROVED! A fantastic opportunity to own a fully furnished, move in ready studio in Waikiki, bordering Ala Moana & Waikiki. Unit 610 has one of the largest floor plans in the building to make it enjoyable long term or for a quick get away! Tastefully remodeled to maximize the space for comfort, relaxation, and easy cooking with full size refrigerator, cook-top and a lanai to relax on. BBQ grill is also available on the same level as the sparkling pool and rec deck. This building is located just minutes away from Hilton Hawaiian Village, Fort DeRussy and Ala Moana Shopping Center! Lots of green open spaces and beaches to keep you healthy and happy! Ideal to live, work, and play! **Unit has fire sprinkler system. Parking and storage are available by rent subject to availability. Currently, the building has a 30 day minimum rental policy, buyer to verify. Great value! HOA includes electricity, hot water, water, sewer, basic cable and internet. **Sale Conditions:** None **Schools:** , , * [Request Showing](#), [Photos](#), [History](#), [Maps](#), [Deed](#), [Watch List](#), [Tax Info](#)





Address	Price	Bd & Bth	Living / Avg.	Land Avg.	DOM
1920 Ala Moana Boulevard 610	\$85,000 LH	0 & 1/0	320 \$266	0 \$inf	82

Address	Tax Maint. Ass.	Assessed Land	Assessed Building	Assessed Total	Ratio	Year & Remodeled
1920 Ala Moana Boulevard 610	\$96 \$654 \$0	\$56,100	\$273,100	\$329,200	26%	1978 & 2011

[1920 Ala Moana Boulevard 610](#) - MLS#: [202408971](#) - Original price was \$89,000 - PRICE IMPROVED! A fantastic opportunity to own a fully furnished, move in ready studio in Waikiki, bordering Ala Moana & Waikiki. Unit 610 has one of the largest floor plans in the building to make it enjoyable long term or for a quick get away! Tastefully remodeled to maximize the space for comfort, relaxation, and easy cooking with full size refrigerator, cook-top and a lanai to relax on. BBQ grill is also available on the same level as the sparkling pool and rec deck. This building is located just minutes away from Hilton Hawaiian Village, Fort DeRussy and Ala Moana Shopping Center! Lots of green open spaces and beaches to keep you healthy and happy! Ideal to live, work, and play! **Unit has fire sprinkler system. Parking and storage are available by rent subject to availability. Currently, the building has a 30 day minimum rental policy, buyer to verify. Great value! HOA includes electricity, hot water, water, sewer, basic cable and internet. **Region:** Metro **Neighborhood:** Waikiki **Condition:** Excellent, Above Average, Average **Parking:** None, Guest, Open - 1, Other **Total Parking:** 0 **View:** City, Mountain **Frontage:** Other **Pool:** **Zoning:** X2 - Apartment Precinct **Sale Conditions:** None **Schools:** , , * [Request Showing](#), [Photos](#), [History](#), [Maps](#), [Deed](#), [Watch List](#), [Tax Info](#)

DOM = Days on Market