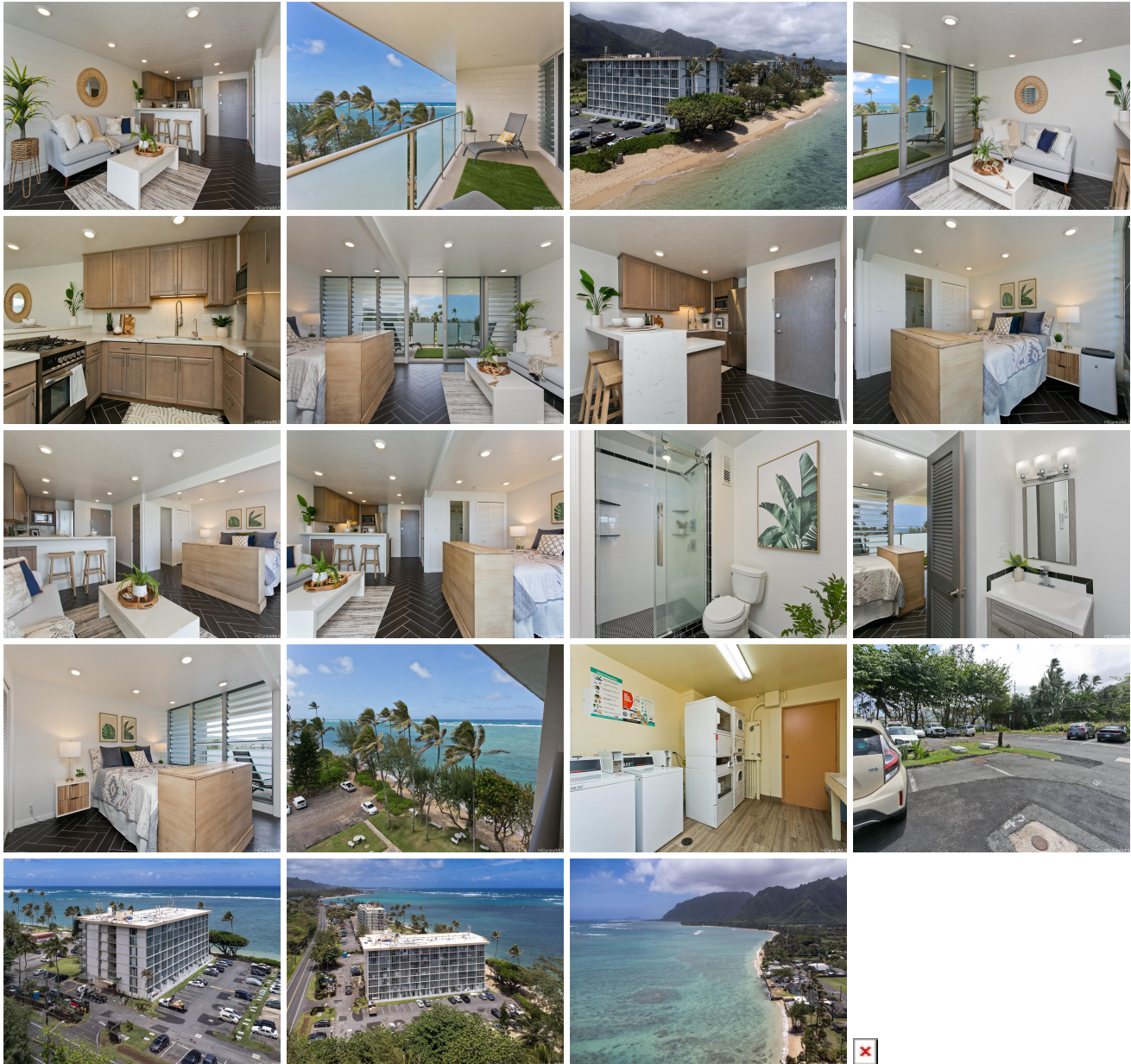


Hanohano Hale 53-549 Kamehameha Highway Unit 705, Hauula 96717 * \$450,000

Beds: 1	MLS#: 202408975, FS	Year Built: 1973
Bath: 1/0	Status: Active	Remodeled: 2018
Living Sq. Ft.: 475	List Date & DOM: 04-29-2024 & 75	Total Parking: 1
Land Sq. Ft.: 0	Condition: Excellent	Assessed Value
Lanai Sq. Ft.: 158	Frontage: Ocean, Sandy Beach	Building: \$75,600
Sq. Ft. Other: 0	Tax/Year: \$46/2024	Land: \$83,400
Total Sq. Ft. 633	Neighborhood: Punaluu	Total: \$159,000
Maint./Assoc. \$1,125 / \$0	Flood Zone : Zone AE - Tool	Stories / CPR: 4-7 / No
Parking: Assigned, Open - 1	Frontage: Ocean, Sandy Beach	
Zoning : 12 - A-2 Medium Density Apartme	View: Coastline, Mountain, Ocean	

Public Remarks: Your oceanfront condo awaits you in Hanohano Hale #705 with one (1) assigned parking stall #45! This dreamy fully renovated unit has been redone to capture the ocean views. Its one-of-a-kind upgrades have been thoughtfully designed to create an open layout and maximize space. The kitchen has new fixtures and cabinets along with marble waterfall countertops and backsplash complemented with bar top seating. The bathroom layout with redesigned with the addition of a closet, new fixtures, and dual showerheads. As you step foot onto your spacious private lanai, relax and enjoy the natural breeze with sweeping views. Great for snow birds or those looking for a second home close to the ocean. Hanohano Hale offers beach access, two community laundry rooms, secured entry, BBQ area, and a private pool. This unit will not disappoint!! **Sale Conditions:** None **Schools:** , , * [Request Showing](#), [Photos](#), [History](#), [Maps](#), [Deed](#), [Watch List](#), [Tax Info](#)



Address	Price	Bd & Bth	Living / Avg.	Land Avg.	DOM
---------	-------	----------	---------------	-------------	-----

53-549 Kamehameha Highway 705	\$450,000	1 & 1/0	475 \$947	0 \$inf	75
---	---------------------------	---------	-------------	-----------	----

Address	Tax Maint. Ass.	Assessed Land	Assessed Building	Assessed Total	Ratio	Year & Remodeled
53-549 Kamehameha Highway 705	\$46 \$1,125 \$0	\$83,400	\$75,600	\$159,000	283%	1973 & 2018

[53-549 Kamehameha Highway 705](#) - MLS#: [202408975](#) - Your oceanfront condo awaits you in Hanohano Hale #705 with one (1) assigned parking stall #45! This dreamy fully renovated unit has been redone to capture the ocean views. Its one-of-a-kind upgrades have been thoughtfully designed to create an open layout and maximize space. The kitchen has new fixtures and cabinets along with marble waterfall countertops and backsplash complemented with bar top seating. The bathroom layout with redesigned with the addition of a closet, new fixtures, and dual showerheads. As you step foot onto your spacious private lanai, relax and enjoy the natural breeze with sweeping views. Great for snow birds or those looking for a second home close to the ocean. Hanohano Hale offers beach access, two community laundry rooms, secured entry, BBQ area, and a private pool. This unit will not disappoint!! **Region:** Kaneohe **Neighborhood:** Punaluu **Condition:** Excellent **Parking:** Assigned, Open - 1 **Total Parking:** 1 **View:** Coastline, Mountain, Ocean **Frontage:** Ocean,Sandy Beach **Pool:** **Zoning:** 12 - A-2 Medium Density Apartme **Sale Conditions:** None **Schools:** , , * [Request Showing](#), [Photos](#), [History](#), [Maps](#), [Deed](#), [Watch List](#), [Tax Info](#)

DOM = Days on Market