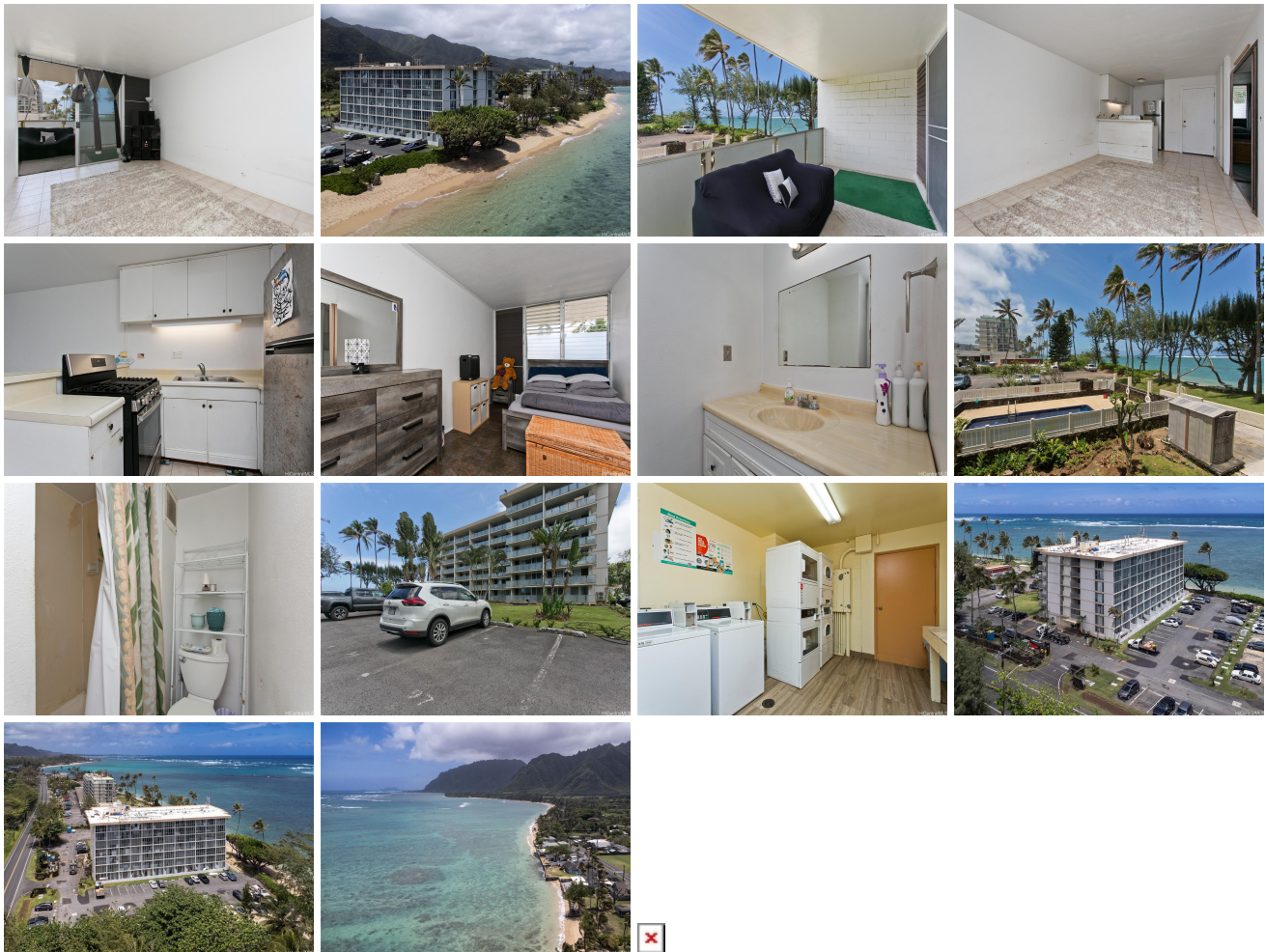


Hanohano Hale 53-549 Kamehameha Highway Unit 205, Hauula 96717 * Hanohano Hale *

\$220,000

Beds: 1	MLS#: 202408982, FS	Year Built: 1973
Bath: 1/0	Status: Active Under Contract	Remodeled:
Living Sq. Ft.: 475	List Date & DOM: 04-29-2024 & 12	Total Parking: 1
Land Sq. Ft.: 0	Condition: Fair	Assessed Value
Lanai Sq. Ft.: 158	Frontage: Ocean, Sandy Beach	Building: \$59,800
Sq. Ft. Other: 0	Tax/Year: \$42/2024	Land: \$83,400
Total Sq. Ft. 633	Neighborhood: Punaluu	Total: \$143,200
Maint./Assoc. \$1,125 / \$0	Flood Zone : Zone AE - Tool	Stories / CPR: 4-7 / No
Parking: Assigned, Open - 1	Frontage: Ocean, Sandy Beach	View: Coastline, Mountain, Ocean
Zoning : 12 - A-2 Medium Density Apartme		

Public Remarks: Your oceanfront condo awaits you in Hanohano Hale #205! Don't miss out on this rare opportunity to experience Hawai'i coastal living at a great price. This unit is ideally situated to enjoy breathtaking ocean and mountain views. Enjoy the natural breezes and relax on your large private lanai or take advantage of having direct beach access. Hanohano offers two community laundry rooms, secured entry, BBQ area, and a pool. **Sale Conditions:** None **Schools:** , , * [Request Showing](#), [Photos](#), [History](#), [Maps](#), [Deed](#), [Watch List](#), [Tax Info](#)



Address	Price	Bd & Bth	Living / Avg.	Land Avg.	Lanai	Occ.	FL	DOM
53-549 Kamehameha Highway 205	\$220,000	1 & 1/0	475 \$463	0 \$inf	158	8%	2	12

Address	Tax Maint. Ass.	Assessed Land	Assessed Building	Assessed Total	Ratio	Year & Remodeled
53-549 Kamehameha Highway 205	\$42 \$1,125 \$0	\$83,400	\$59,800	\$143,200	154%	1973 & NA

[53-549 Kamehameha Highway 205](#) - MLS#: [202408982](#) - Your oceanfront condo awaits you in Hanohano Hale #205! Don't miss out on this rare opportunity to experience Hawai'i coastal living at a great price. This unit is ideally situated to enjoy breathtaking ocean and mountain views. Enjoy the natural breezes and relax on your large private lanai or take advantage of having direct beach access. Hanohano offers two community laundry rooms, secured entry, BBQ area, and a pool. **Region:** Kaneohe **Neighborhood:** Punaluu **Condition:** Fair **Parking:** Assigned, Open - 1 **Total Parking:** 1 **View:** Coastline, Mountain, Ocean **Frontage:** Ocean,Sandy Beach **Pool:** **Zoning:** 12 - A-2 Medium Density Apartme **Sale Conditions:** None **Schools:** , , * [Request Showing](#), [Photos](#), [History](#), [Maps](#), [Deed](#), [Watch List](#), [Tax Info](#)

DOM = Days on Market, Occ. = Occupancy, FL = Floor Number