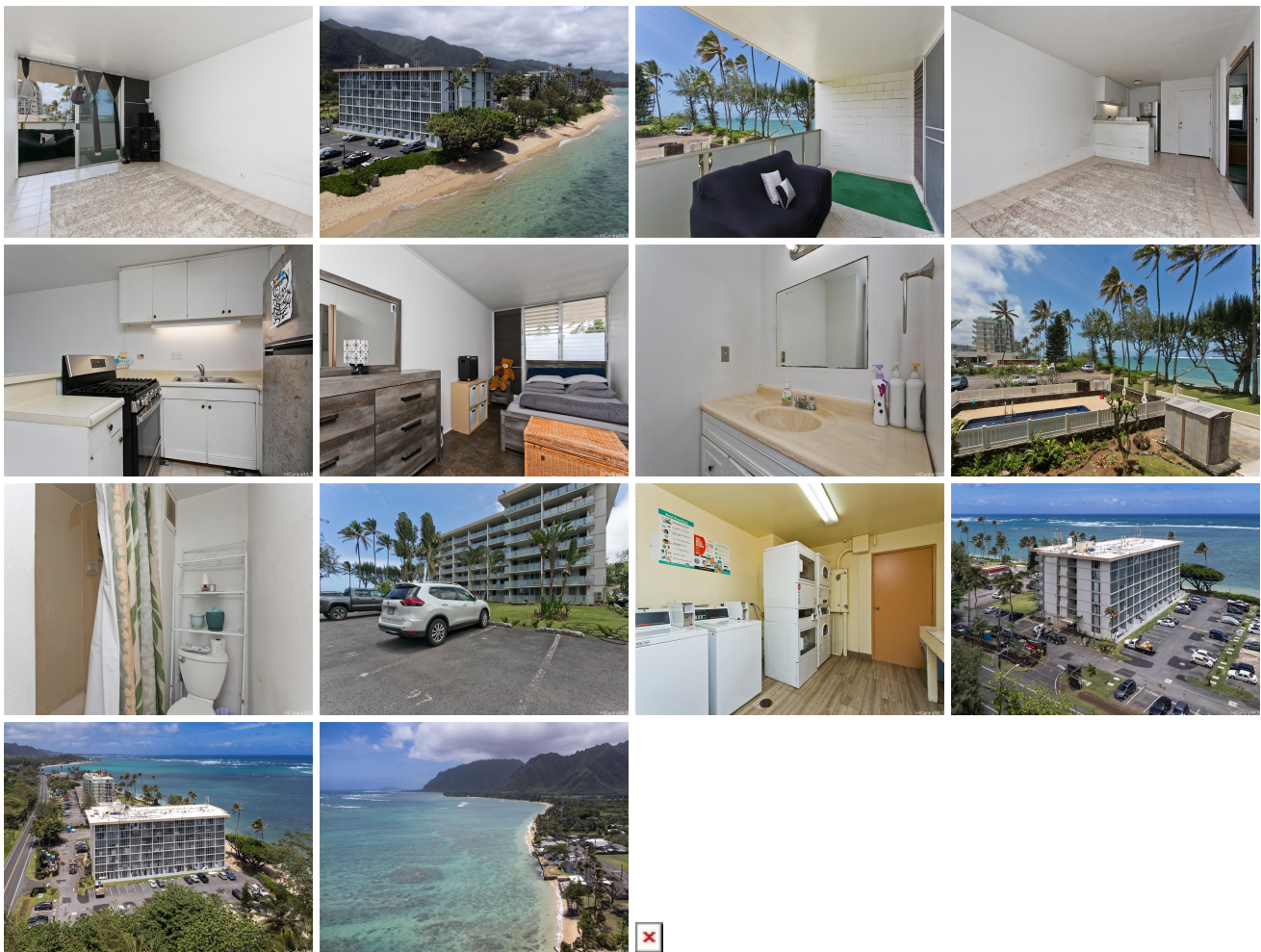


**Hanohano Hale 53-549 Kamehameha Highway Unit 205, Hauula 96717 \* \$220,000**

Beds: <b>1</b>	MLS#: <b>202408982, FS</b>	Year Built: <b>1973</b>
Bath: <b>1/0</b>	Status: <b>Active Under Contract</b>	Remodeled:
Living Sq. Ft.: <b>475</b>	List Date & DOM: <b>04-29-2024 &amp; 12</b>	Total Parking: <b>1</b>
Land Sq. Ft.: <b>0</b>	Condition: <b>Fair</b>	<a href="#">Assessed Value</a>
Lanai Sq. Ft.: <b>158</b>	Frontage: <b>Ocean, Sandy Beach</b>	Building: <b>\$59,800</b>
Sq. Ft. Other: <b>0</b>	Tax/Year: <b>\$42/2024</b>	Land: <b>\$83,400</b>
Total Sq. Ft. <b>633</b>	Neighborhood: <b>Punaluu</b>	Total: <b>\$143,200</b>
Maint./Assoc. <b>\$1,125 / \$0</b>	<a href="#">Flood Zone</a> : <b>Zone AE - Tool</b>	Stories / CPR: <b>4-7 / No</b>
Parking: <b>Assigned, Open - 1</b>	Frontage: <b>Ocean, Sandy Beach</b>	View: <b>Coastline, Mountain, Ocean</b>
<a href="#">Zoning</a> : <b>12 - A-2 Medium Density Apartme</b>		

**Public Remarks:** Your oceanfront condo awaits you in Hanohano Hale #205! Don't miss out on this rare opportunity to experience Hawai'i coastal living at a great price. This unit is ideally situated to enjoy breathtaking ocean and mountain views. Enjoy the natural breezes and relax on your large private lanai or take advantage of having direct beach access. Hanohano offers two community laundry rooms, secured entry, BBQ area, and a pool. **Sale Conditions:** None **Schools:** , , \* [Request Showing](#), [Photos](#), [History](#), [Maps](#), [Deed](#), [Watch List](#), [Tax Info](#)



Address	Price	Bd & Bth	Living / Avg.	Land   Avg.	DOM
<a href="#">53-549 Kamehameha Highway 205</a>	<a href="#">\$220,000</a>	1 & 1/0	475   \$463	0   \$inf	12

Address	Tax   Maint.   Ass.	Assessed Land	Assessed Building	Assessed Total	Ratio	Year & Remodeled
<a href="#">53-549 Kamehameha Highway 205</a>	\$42   \$1,125   \$0	\$83,400	\$59,800	\$143,200	154%	1973 & NA

[53-549 Kamehameha Highway 205](#) - MLS#: [202408982](#) - Your oceanfront condo awaits you in Hanohano Hale #205! Don't miss out on this rare opportunity to experience Hawai'i coastal living at a great price. This unit is ideally situated to enjoy breathtaking ocean and mountain views. Enjoy the natural breezes and relax on your large private lanai or take advantage of having direct beach access. Hanohano offers two community laundry rooms, secured entry, BBQ area, and a pool. **Region:** Kaneohe **Neighborhood:** Punaluu **Condition:** Fair **Parking:** Assigned, Open - 1 **Total Parking:** 1 **View:** Coastline, Mountain, Ocean **Frontage:** Ocean,Sandy Beach **Pool:** **Zoning:** 12 - A-2 Medium Density Apartme **Sale Conditions:** None **Schools:** , , \* [Request Showing](#), [Photos](#), [History](#), [Maps](#), [Deed](#), [Watch List](#), [Tax Info](#)

DOM = Days on Market