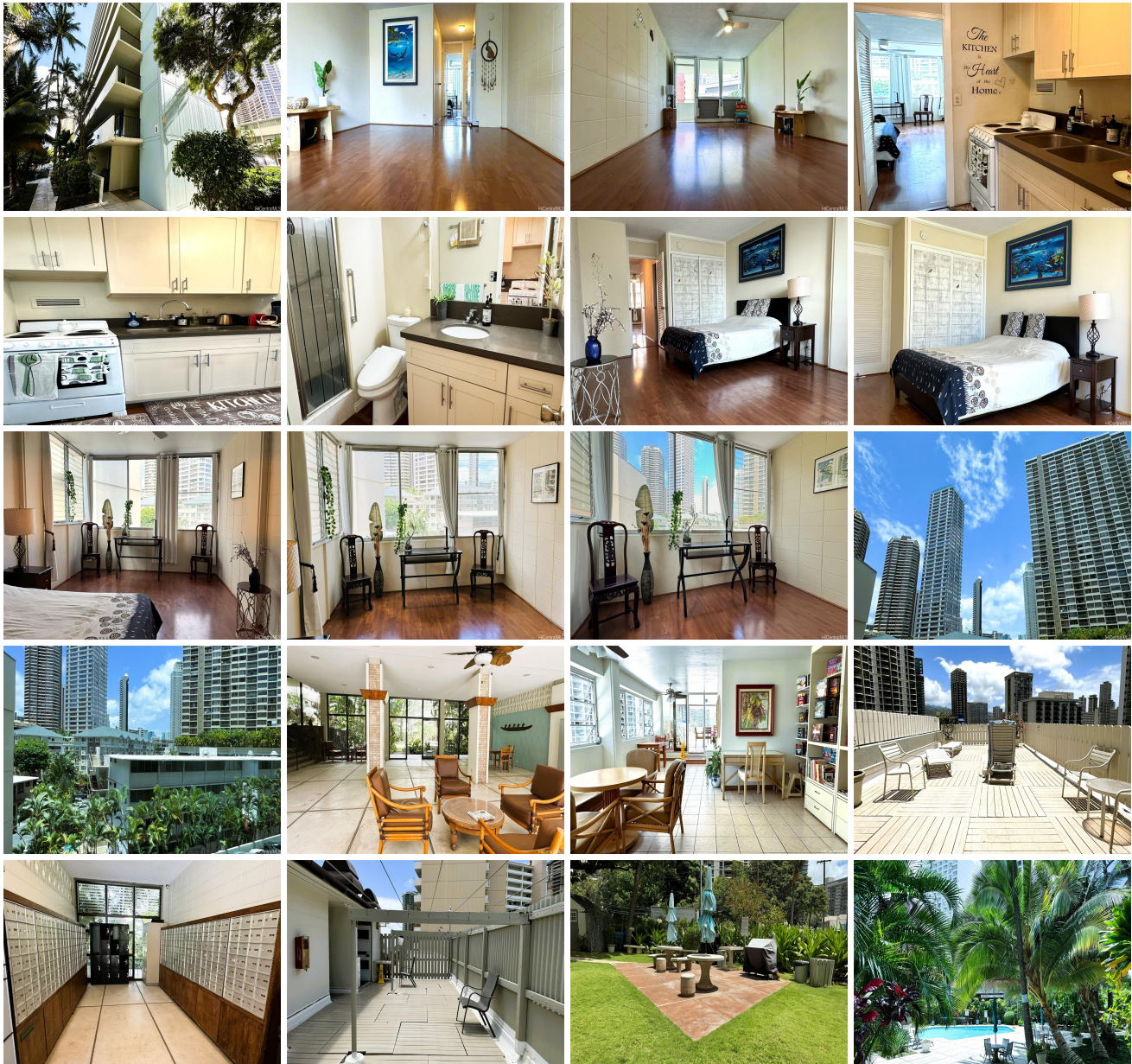
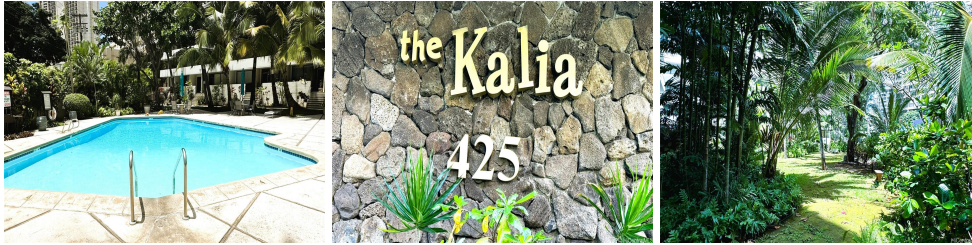


**Kalia 425 Ena Road Unit B408, Honolulu 96815 \* \$115,000**

Beds: <b>1</b>	MLS#: <b>202409047</b> , LH	Year Built: <b>1958</b>
Bath: <b>1/0</b>	Status: <b>Active</b>	Remodeled: <b>2016</b>
Living Sq. Ft.: <b>588</b>	List Date & DOM: <b>04-26-2024 &amp; 65</b>	Total Parking: <b>0</b>
Land Sq. Ft.: <b>0</b>	Condition: <b>Above Average</b>	<a href="#">Assessed Value</a>
Lanai Sq. Ft.: <b>0</b>	Frontage:	Building: <b>\$200,900</b>
Sq. Ft. Other: <b>0</b>	Tax/Year: <b>\$87/2023</b>	Land: <b>\$96,500</b>
Total Sq. Ft. <b>588</b>	Neighborhood: <b>Waikiki</b>	Total: <b>\$297,400</b>
Maint./Assoc. <b>\$814 / \$0</b>	<a href="#">Flood Zone</a> : <b>Zone AE - Tool</b>	Stories / CPR: <b>8-14 / No</b>
Parking: <b>None</b>	Frontage:	
<a href="#">Zoning</a> : <b>X2 - Apartment Precinct</b>	View: <b>City, Garden</b>	

**Public Remarks:** Rarely available end unit 1-bedroom in the beautiful Kalia. Unit features laminate flooring throughout, enclosed lanai increasing bedroom size, nice kitchen with updated cabinets & countertops, newly installed ToTo washlet in the bathroom. Cool cross breezes! Kalia is gated Unit in Kalia sounds like a dream with its Luxury features and convenient location. Plus, the amenities like the in ground pool and BBQ area add to its appeal. and having the maintenance fee cover electricity, cable TV and internet is definitely a bonus. with library, storage unit, sundeck, on-site security, office & resident manager, gated entries, keyed elevators and much more. The "food pantry", breakfast hotspot "Aloha Kitchen" and more shops & eateries across the street. Blocks from renowned beaches & shopping. Parking stall for rent through Kalia and other nearby facilities. Street & public parking garages nearby. Long lease that expires in 2048. Maintenance fee INCLUDES electricity, sewer, water, hot water, cable TV and internet. Other fee includes Property Tax-\$87. **Sale Conditions:** None  
**Schools:** , , \* [Request Showing](#), [Photos](#), [History](#), [Maps](#), [Deed](#), [Watch List](#), [Tax Info](#)





Address	Price	Bd & Bth	Living / Avg.	Land   Avg.	DOM
<a href="#">425 Ena Road B408</a>	\$115,000 LH	1 & 1/0	588   \$196	0   \$inf	65

Address	Tax   Maint.   Ass.	Assessed Land	Assessed Building	Assessed Total	Ratio	Year & Remodeled
<a href="#">425 Ena Road B408</a>	\$87   \$814   \$0	\$96,500	\$200,900	\$297,400	39%	1958 & 2016

[425 Ena Road B408](#) - MLS#: [202409047](#) - Rarely available end unit 1-bedroom in the beautiful Kalia. Unit features laminate flooring throughout, enclosed lanai increasing bedroom size, nice kitchen with updated cabinets & countertops, newly installed ToTo washlet in the bathroom. Cool cross breezes! Kalia is gated Unit in Kalia sounds like a dream with its Luxury features and convenient location. Plus, the amenities like the in ground pool and BBQ area add to its appeal. and having the maintenance fee cover electricity, cable TV and internet is definitely a bonus. with library, storage unit, sundeck, on-site security, office & resident manager, gated entries, keyed elevators and much more. The "food pantry", breakfast hotspot "Aloha Kitchen" and more shops & eateries across the street. Blocks from renowned beaches & shopping. Parking stall for rent through Kalia and other nearby facilities. Street & public parking garages nearby. Long lease that expires in 2048. Maintenance fee INCLUDES electricity, sewer, water, hot water, cable TV and internet. Other fee includes Property Tax-\$87. **Region:** Metro **Neighborhood:** Waikiki **Condition:** Above Average **Parking:** None **Total Parking:** 0 **View:** City, Garden **Frontage:** **Pool:** **Zoning:** X2 - Apartment Precinct **Sale Conditions:** None **Schools:** , , \* [Request Showing](#), [Photos](#), [History](#), [Maps](#), [Deed](#), [Watch List](#), [Tax Info](#)

DOM = Days on Market