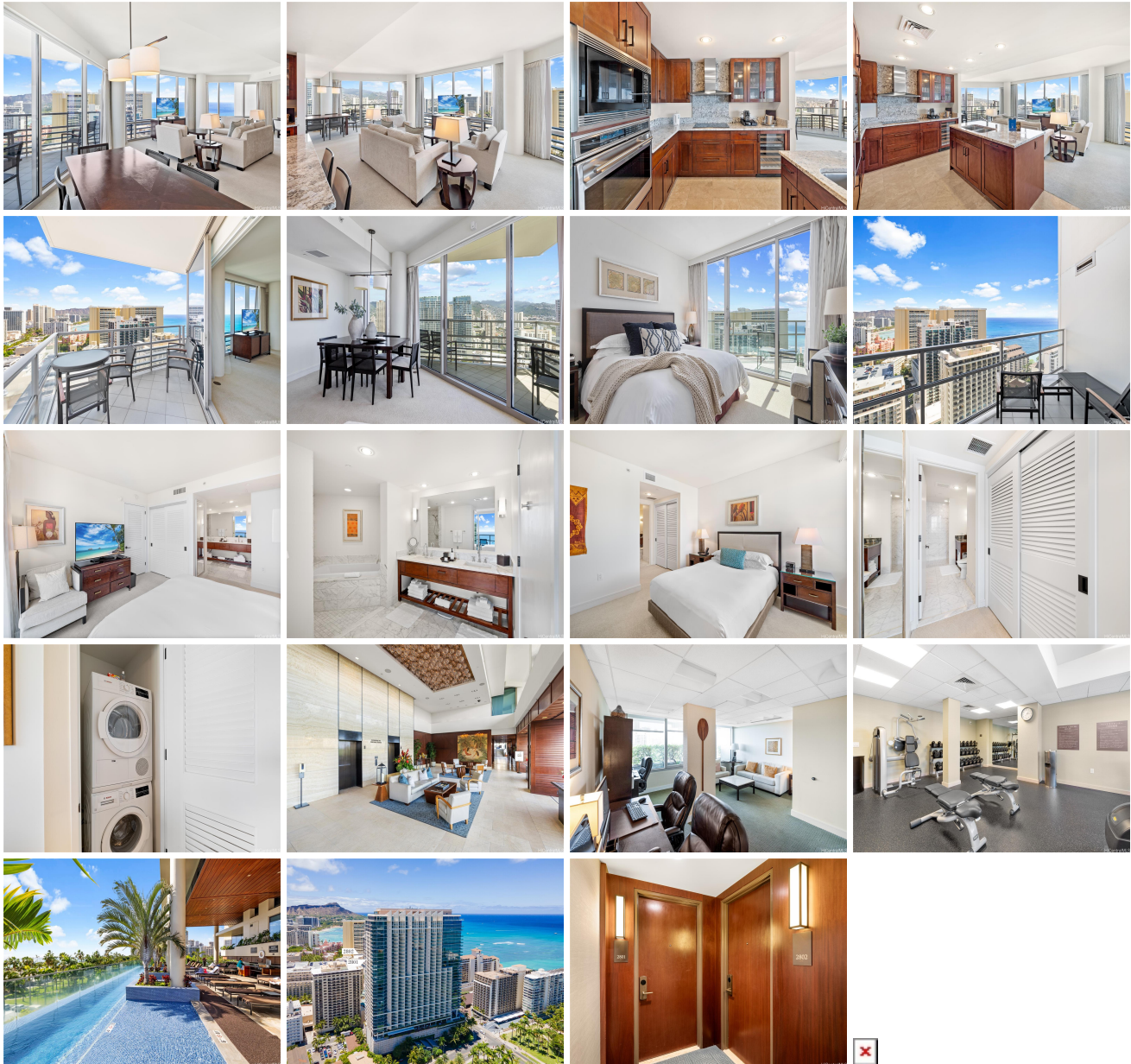


Trump Tower Waikiki 223 Saratoga Road Unit 2802 (Corner end), Honolulu 96815 * Trump Tower Waikiki * \$1,850,000 * Originally \$1,950,000

Beds: 2	MLS#: 202409060, FS	Year Built: 2009
Bath: 2/0	Status: Active	Remodeled:
Living Sq. Ft.: 1,403	List Date & DOM: 04-26-2024 & 80	Total Parking: 0
Land Sq. Ft.: 0	Condition: Excellent, Above Average	Assessed Value
Lanai Sq. Ft.: 81	Frontage:	Building: \$1,173,700
Sq. Ft. Other: 0	Tax/Year: \$2,263/2023	Land: \$779,500
Total Sq. Ft. 1,484	Neighborhood: Waikiki	Total: \$1,953,200
Maint./Assoc. \$2,541 / \$0	Flood Zone : Zone AE - Tool	Stories / CPR: 21+ / No
Parking: None	Frontage:	
Zoning : X6 - Resort Mixed Use Precinct	View: City, Diamond Head, Mountain, Ocean	

Public Remarks: Elevate your lifestyle with stunning 180 degree views of the sea, mountains, and the foothills of Diamond Head from this high-floor corner unit. Relax on the lanai off the primary bedroom facing the ocean or the one overlooking the living-dining area with mountain views. Appreciate the well-equipped kitchen, sizable bathrooms, and liberal storage, including a walk-in closet in the primary bedroom. Just minutes from Waikiki Beach, offering dining options, an infinity pool, fitness center, and spa facilities. The two-bedroom corner unit next door, 2801, is also available. Great opportunity for family and friends. Experience the epitome of luxury hospitality. Perfect as a residence, a lavish retreat, or tailored to your lifestyle needs, offering sophisticated living spaces. **Sale Conditions:** None **Schools:** , , * [Request Showing, Photos, History, Maps, Deed, Watch List, Tax Info](#)



Address	Price	Bd & Bth	Living / Avg.	Land Avg.	Lanai	Occ.	FL	DOM
223 Saratoga Road 2802 (Corner end)	\$1,850,000	2 & 2/0	1,403 \$1,319	0 \$inf	81	5%	28	80

Address	Tax Maint. Ass.	Assessed Land	Assessed Building	Assessed Total	Ratio	Year & Remodeled
223 Saratoga Road 2802 (Corner end)	\$2,263 \$2,541 \$0	\$779,500	\$1,173,700	\$1,953,200	95%	2009 & NA

[223 Saratoga Road 2802 \(Corner end\)](#) - MLS#: [202409060](#) - Original price was \$1,950,000 - Elevate your lifestyle with stunning 180 degree views of the sea, mountains, and the foothills of Diamond Head from this high-floor corner unit. Relax on the lanai off the primary bedroom facing the ocean or the one overlooking the living-dining area with mountain views. Appreciate the well-equipped kitchen, sizable bathrooms, and liberal storage, including a walk-in closet in the primary bedroom. Just minutes from Waikiki Beach, offering dining options, an infinity pool, fitness center, and spa facilities. The two-bedroom corner unit next door, 2801, is also available. Great opportunity for family and friends. Experience the epitome of luxury hospitality. Perfect as a residence, a lavish retreat, or tailored to your lifestyle needs, offering sophisticated living spaces. **Region:** Metro **Neighborhood:** Waikiki **Condition:** Excellent, Above Average **Parking:** None **Total Parking:** 0 **View:** City, Diamond Head, Mountain, Ocean **Frontage:** **Pool:** **Zoning:** X6 - Resort Mixed Use Precinct **Sale Conditions:** None **Schools:** , , * [Request Showing](#), [Photos](#), [History](#), [Maps](#), [Deed](#), [Watch List](#), [Tax Info](#)

DOM = Days on Market, Occ. = Occupancy, FL = Floor Number