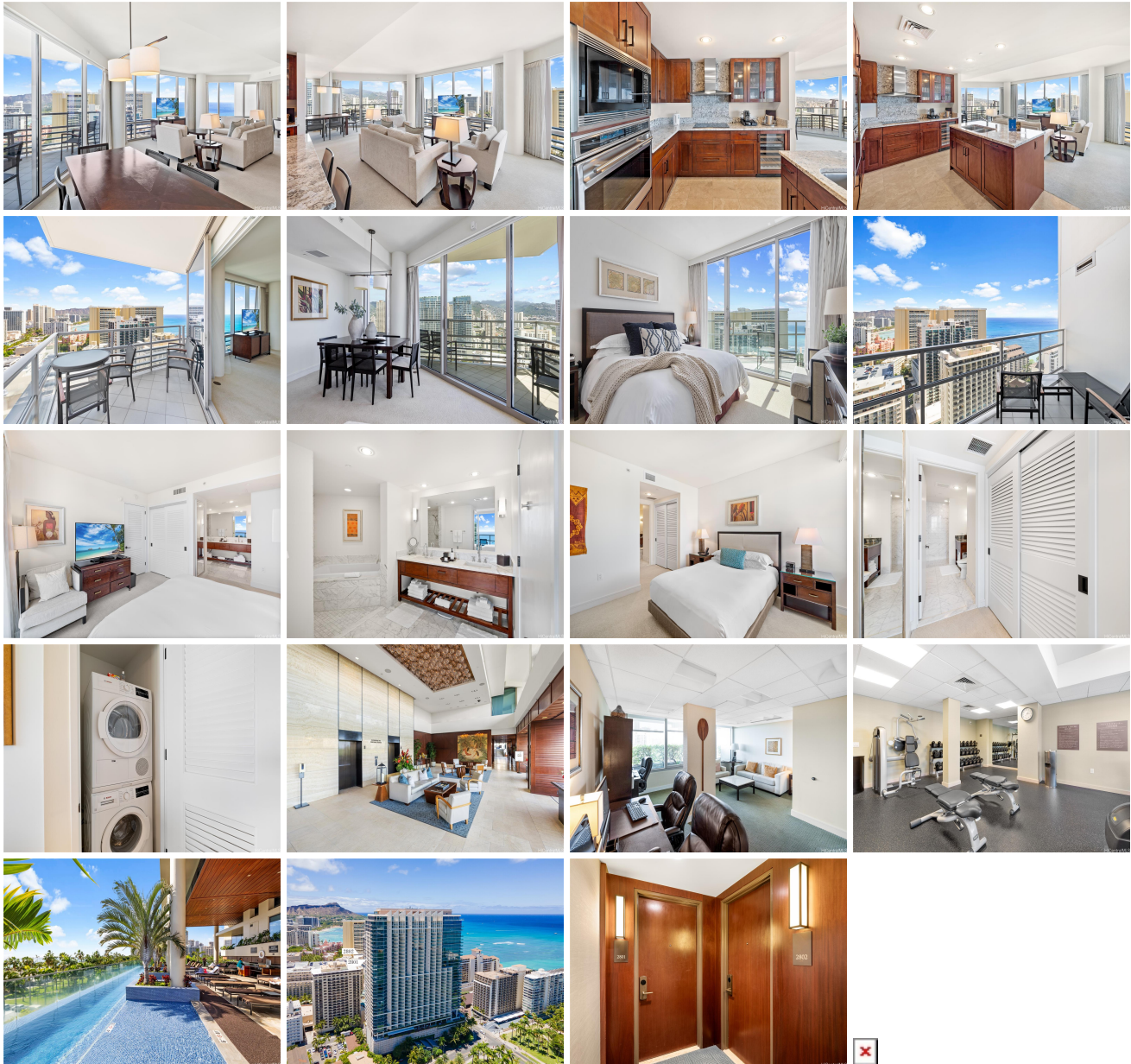


**Trump Tower Waikiki 223 Saratoga Road Unit 2802 (Corner end), Honolulu 96815 \***

**\$1,850,000 \* Originally \$1,950,000**

Beds: <b>2</b>	MLS#: <b>202409060, FS</b>	Year Built: <b>2009</b>
Bath: <b>2/0</b>	Status: <b>Active</b>	Remodeled:
Living Sq. Ft.: <b>1,403</b>	List Date & DOM: <b>04-26-2024 &amp; 80</b>	Total Parking: <b>0</b>
Land Sq. Ft.: <b>0</b>	Condition: <b>Excellent, Above Average</b>	<a href="#">Assessed Value</a>
Lanai Sq. Ft.: <b>81</b>	Frontage:	Building: <b>\$1,173,700</b>
Sq. Ft. Other: <b>0</b>	Tax/Year: <b>\$2,263/2023</b>	Land: <b>\$779,500</b>
Total Sq. Ft. <b>1,484</b>	Neighborhood: <b>Waikiki</b>	Total: <b>\$1,953,200</b>
Maint./Assoc. <b>\$2,541 / \$0</b>	<a href="#">Flood Zone</a> : <b>Zone AE - Tool</b>	Stories / CPR: <b>21+ / No</b>
Parking: <b>None</b>	Frontage:	
<a href="#">Zoning</a> : <b>X6 - Resort Mixed Use Precinct</b>	View: <b>City, Diamond Head, Mountain, Ocean</b>	

**Public Remarks:** Elevate your lifestyle with stunning 180 degree views of the sea, mountains, and the foothills of Diamond Head from this high-floor corner unit. Relax on the lanai off the primary bedroom facing the ocean or the one overlooking the living-dining area with mountain views. Appreciate the well-equipped kitchen, sizable bathrooms, and liberal storage, including a walk-in closet in the primary bedroom. Just minutes from Waikiki Beach, offering dining options, an infinity pool, fitness center, and spa facilities. The two-bedroom corner unit next door, 2801, is also available. Great opportunity for family and friends. Experience the epitome of luxury hospitality. Perfect as a residence, a lavish retreat, or tailored to your lifestyle needs, offering sophisticated living spaces. **Sale Conditions:** None **Schools:** , , \* [Request Showing](#), [Photos](#), [History](#), [Maps](#), [Deed](#), [Watch List](#), [Tax Info](#)



Address	Price	Bd & Bth	Living / Avg.	Land   Avg.	DOM
<a href="#">223 Saratoga Road 2802 (Corner end)</a>	<b>\$1,850,000</b>	2 & 2/0	1,403   \$1,319	0   \$inf	80

Address	Tax   Maint.   Ass.	Assessed Land	Assessed Building	Assessed Total	Ratio	Year & Remodeled
<a href="#">223 Saratoga Road 2802 (Corner end)</a>	\$2,263   \$2,541   \$0	\$779,500	\$1,173,700	\$1,953,200	95%	2009 & NA

[223 Saratoga Road 2802 \(Corner end\)](#) - MLS#: [202409060](#) - Original price was \$1,950,000 - Elevate your lifestyle with stunning 180 degree views of the sea, mountains, and the foothills of Diamond Head from this high-floor corner unit. Relax on the lanai off the primary bedroom facing the ocean or the one overlooking the living-dining area with mountain views. Appreciate the well-equipped kitchen, sizable bathrooms, and liberal storage, including a walk-in closet in the primary bedroom. Just minutes from Waikiki Beach, offering dining options, an infinity pool, fitness center, and spa facilities. The two-bedroom corner unit next door, 2801, is also available. Great opportunity for family and friends. Experience the epitome of luxury hospitality. Perfect as a residence, a lavish retreat, or tailored to your lifestyle needs, offering sophisticated living spaces. **Region:** Metro **Neighborhood:** Waikiki **Condition:** Excellent, Above Average **Parking:** None **Total Parking:** 0 **View:** City, Diamond Head, Mountain, Ocean **Frontage:** **Pool:** **Zoning:** X6 - Resort Mixed Use Precinct **Sale Conditions:** None **Schools:** , , \* [Request Showing](#), [Photos](#), [History](#), [Maps](#), [Deed](#), [Watch List](#), [Tax Info](#)

DOM = Days on Market