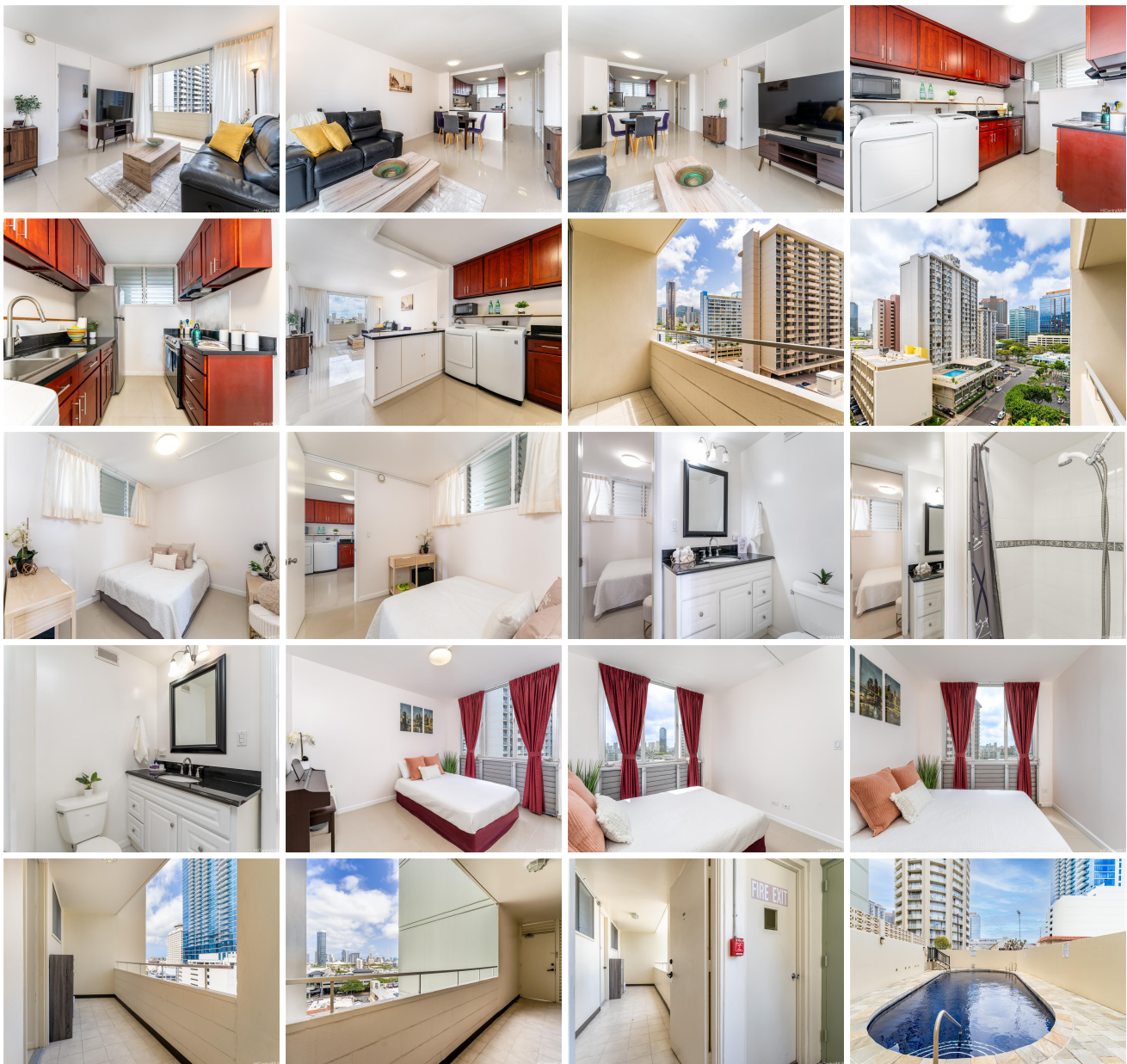


**Woodrose 780 Amana Street Unit 908, Honolulu 96814 \* Woodrose \* \$498,000**

Beds: <b>2</b>	MLS#: <b>202409086, FS</b>	Year Built: <b>1967</b>
Bath: <b>1/1</b>	Status: <b>Active</b>	Remodeled: <b>2011</b>
Living Sq. Ft.: <b>778</b>	List Date & DOM: <b>06-07-2024 &amp; 23</b>	Total Parking: <b>1</b>
Land Sq. Ft.: <b>0</b>	Condition: <b>Above Average</b>	<a href="#">Assessed Value</a>
Lanai Sq. Ft.: <b>142</b>	Frontage:	Building: <b>\$413,100</b>
Sq. Ft. Other: <b>0</b>	Tax/Year: <b>\$104/2024</b>	Land: <b>\$61,300</b>
Total Sq. Ft. <b>920</b>	Neighborhood: <b>Holiday Mart</b>	Total: <b>\$474,400</b>
Maint./Assoc. <b>\$928 / \$0</b>	<a href="#">Flood Zone</a> : <b>Zone X - Tool</b>	Stories / CPR: / <b>No</b>
Parking: <b>Assigned, Covered - 1, Garage, Street</b>	Frontage:	
<a href="#">Zoning</a> : <b>18 - AMX-3 High Density Apt Mix</b>	View: <b>City, Mountain</b>	

**Public Remarks:** NEW LISTING!! Enjoy the best of urban living from this beautifully renovated and well-maintained 2 bdrm/1.5 bath CORNER/END unit with 1 covered parking at Woodrose. Features include an open floor plan with an updated kitchen, granite countertops and stainless-steel appliances, renovated bathrooms, and 2 secured private lanai on the east and west facing sides of the building. Centrally located near Ala Moana Beach Park, Magic Island, Ala Moana Shopping Center, and Ward Village with numerous dining, shopping, and entertainment options. A must see! **Sale Conditions:** None **Schools:** [Kaahumanu](#), [Washington](#), [Mckinley](#) \* [Request Showing](#), [Photos](#), [History](#), [Maps](#), [Deed](#), [Watch List](#), [Tax Info](#)





Address	Price	Bd & Bth	Living / Avg.	Land   Avg.	Lanai	Occ.	FL	DOM
<a href="#">780 Amana Street 908</a>	<a href="#">\$498,000</a>	2 & 1/1	778   \$640	0   \$inf	142	51%	10	23

Address	Tax   Maint.   Ass.	Assessed Land	Assessed Building	Assessed Total	Ratio	Year & Remodeled
<a href="#">780 Amana Street 908</a>	\$104   \$928   \$0	\$61,300	\$413,100	\$474,400	105%	1967 & 2011

[780 Amana Street 908](#) - MLS#: [202409086](#) - NEW LISTING!! Enjoy the best of urban living from this beautifully renovated and well-maintained 2 bdrm/1.5 bath CORNER/END unit with 1 covered parking at Woodrose. Features include an open floor plan with an updated kitchen, granite countertops and stainless-steel appliances, renovated bathrooms, and 2 secured private lanai on the east and west facing sides of the building. Centrally located near Ala Moana Beach Park, Magic Island, Ala Moana Shopping Center, and Ward Village with numerous dining, shopping, and entertainment options. A must see! **Region:** Metro **Neighborhood:** Holiday Mart **Condition:** Above Average **Parking:** Assigned, Covered - 1, Garage, Street **Total Parking:** 1 **View:** City, Mountain **Frontage:** Pool: **Zoning:** 18 - AMX-3 High Density Apt Mix **Sale Conditions:** None **Schools:** [Kaahumanu](#), [Washington](#), [Mckinley](#) \* [Request Showing](#), [Photos](#), [History](#), [Maps](#), [Deed](#), [Watch List](#), [Tax Info](#)

DOM = Days on Market, Occ. = Occupancy, FL = Floor Number