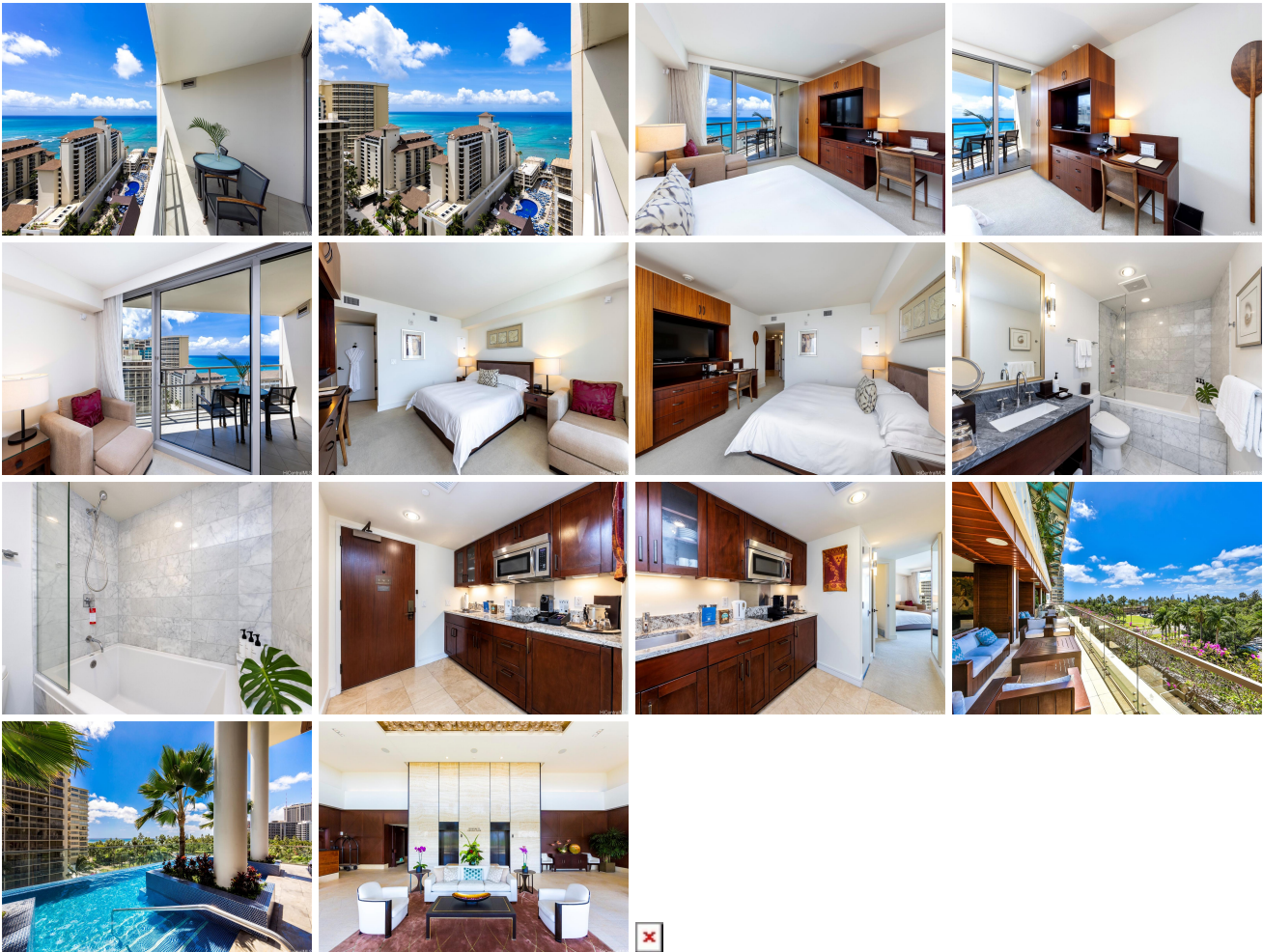


**Trump Tower Waikiki 223 Saratoga Road Unit 2218, Honolulu 96815 \* \$515,000**

Beds: <b>0</b>	MLS#: <b>202409201, FS</b>	Year Built: <b>2009</b>
Bath: <b>1/0</b>	Status: <b>Active</b>	Remodeled:
Living Sq. Ft.: <b>355</b>	List Date & DOM: <b>05-01-2024 &amp; 52</b>	Total Parking: <b>0</b>
Land Sq. Ft.: <b>0</b>	Condition: <b>Excellent</b>	<a href="#">Assessed Value</a>
Lanai Sq. Ft.: <b>75</b>	Frontage:	Building: <b>\$157,600</b>
Sq. Ft. Other: <b>0</b>	Tax/Year: <b>\$373/2024</b>	Land: <b>\$203,600</b>
Total Sq. Ft. <b>430</b>	Neighborhood: <b>Waikiki</b>	Total: <b>\$361,200</b>
Maint./Assoc. <b>\$643 / \$0</b>	<a href="#">Flood Zone</a> : <b>Zone AE - Tool</b>	Stories / CPR: <b>21+ / No</b>
Parking: <b>None, Other</b>	Frontage:	
<a href="#">Zoning</a> : <b>X6 - Resort Mixed Use Precinct</b>	View: <b>Ocean</b>	

**Public Remarks:** Ka La'i Waikiki Beach, formerly Trump International Hotel Waikiki, stands as an icon of luxury living in Honolulu. Situated along the southern coastline of Oahu near the entrance of Waikiki, this superb location puts you just across the street from world-famous Waikiki Beach, where turquoise ocean waters, stretching sandy beaches, and water activities await. This 22nd floor studio unit enjoys stunning Pacific Ocean views from the primary living area and lanai spaces. High-end finishes include wood cabinetry, granite counter tops, a resort bathroom with a deep soaking tub, a modern vanity, central air conditioning, & high-end furnishings. Unit has been upgraded to include a built-in workstation with additional cabinetry, creating a truly one-of-a-kind residence. Enjoy a true resort lifestyle featuring signature concierge services, luxurious amenities, a stunning infinity-edge pool, fitness center, spa, and on-site restaurants, available at your leisure. **Sale Conditions:** None **Schools:** [Jefferson](#), [Washington](#), [Kaimuki](#) \* [Request Showing](#), [Photos](#), [History](#), [Maps](#), [Deed](#), [Watch List](#), [Tax Info](#)



Address	Price	Bd & Bth	Living / Avg.	Land   Avg.	DOM
<a href="#">223 Saratoga Road 2218</a>	<a href="#">\$515,000</a>	0 & 1/0	355   \$1,451	0   \$inf	52

Address	Tax   Maint.   Ass.	Assessed Land	Assessed Building	Assessed Total	Ratio	Year & Remodeled
<a href="#">223 Saratoga Road 2218</a>	\$373   \$643   \$0	\$203,600	\$157,600	\$361,200	143%	2009 & NA

[223 Saratoga Road 2218](#) - MLS#: [202409201](#) - Ka La'i Waikiki Beach, formerly Trump International Hotel Waikiki, stands as an icon of luxury living in Honolulu. Situated along the southern coastline of Oahu near the entrance of Waikiki, this superb location puts you just across the street from world-famous Waikiki Beach, where turquoise ocean waters, stretching sandy beaches, and water activities await. This 22nd floor studio unit enjoys stunning Pacific Ocean views from the primary living area and lanai spaces. High-end finishes include wood cabinetry, granite counter tops, a resort bathroom with a deep soaking tub, a modern vanity, central air conditioning, & high-end furnishings. Unit has been upgraded to include a built-in workstation with additional cabinetry, creating a truly one-of-a-kind residence. Enjoy a true resort lifestyle featuring signature concierge services, luxurious amenities, a stunning infinity-edge pool, fitness center, spa, and on-site restaurants, available at your leisure. **Region:** Metro **Neighborhood:** Waikiki **Condition:** Excellent **Parking:** None, Other **Total Parking:** 0 **View:** Ocean **Frontage:** **Pool:** **Zoning:** X6 - Resort Mixed Use Precinct **Sale Conditions:** None **Schools:** [Jefferson](#), [Washington](#), [Kaimuki](#) \* [Request Showing](#), [Photos](#), [History](#), [Maps](#), [Deed](#), [Watch List](#), [Tax Info](#)

DOM = Days on Market