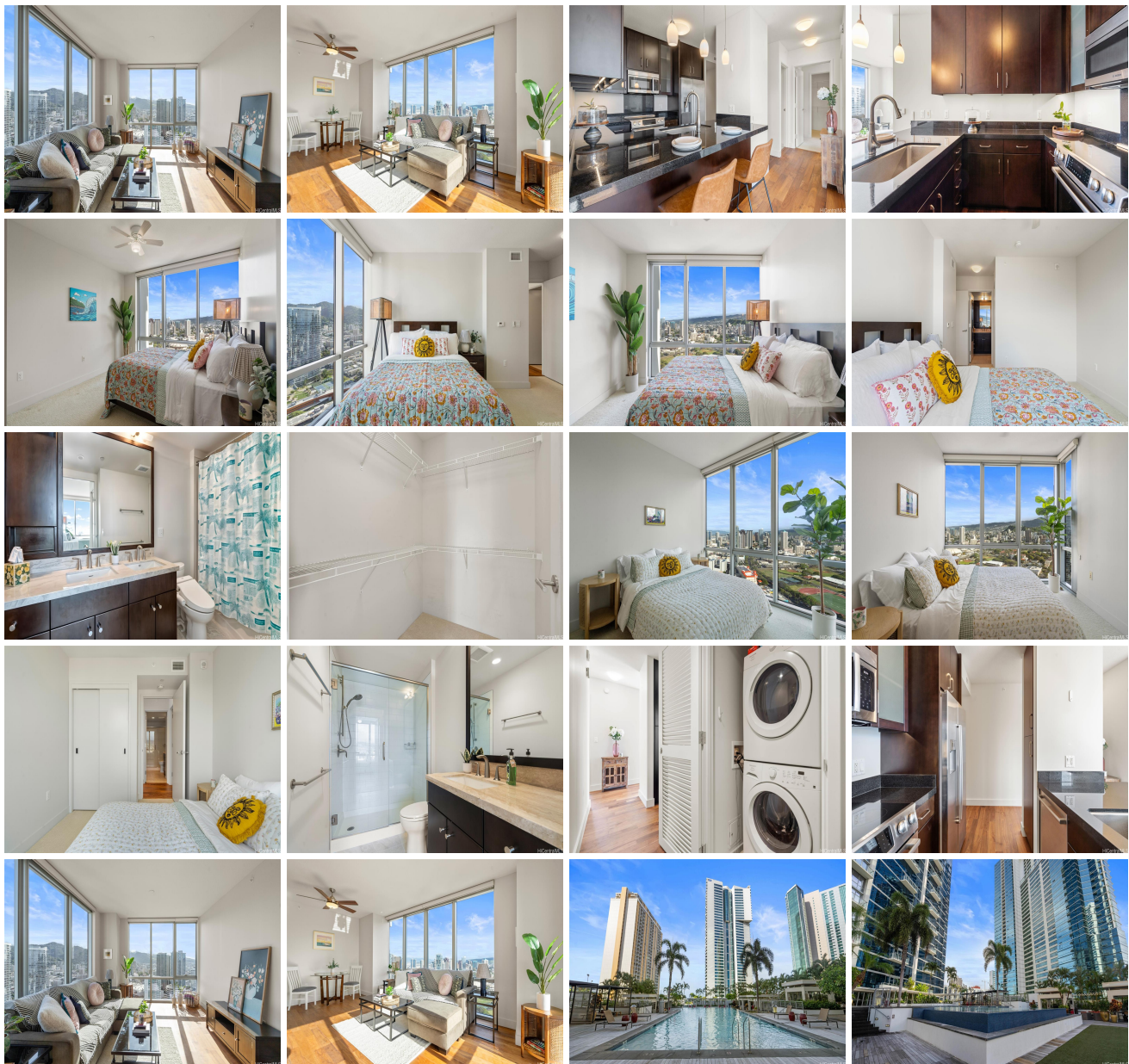


Waihonua 1189 Waimanu Street Unit 3706, Honolulu 96814 * Waihonua * \$1,199,000

Beds: 2	MLS#: 202409339, FS	Year Built: 2014
Bath: 2/0	Status: Active	Remodeled:
Living Sq. Ft.: 1,034	List Date & DOM: 05-01-2024 & 56	Total Parking: 2
Land Sq. Ft.: 0	Condition: Excellent	Assessed Value
Lanai Sq. Ft.: 0	Frontage: Other	Building: \$1,142,100
Sq. Ft. Other: 0	Tax/Year: \$345/2023	Land: \$41,100
Total Sq. Ft. 1,034	Neighborhood: Kakaako	Total: \$1,183,200
Maint./Assoc. \$1,223 / \$0	Flood Zone : Zone AE - Tool	Stories / CPR: 21+ / No
Parking: Assigned, Covered - 2, Secured Entry	Frontage: Other	
Zoning : Kak - Kakaako Community Development Project	View: City, Mountain, Sunrise	

Public Remarks: Aloha from arguably the best place on the planet for a tropical urban lifestyle. Nestled in proximity to Ala Moana Center, Ala Moana Beach Park, and Ward Village, this exquisite residence offers an unparalleled lifestyle. With its floor-to-ceiling windows, refined interior finishes, and premium Bosch appliances, every detail exudes sophistication. Situated as a corner end unit on the mountain side of the esteemed Waihonua luxury condominium, this home is impeccably maintained. Enjoy access to an array of exceptional building amenities, from an infinity-edge heated pool to a club room with a full kitchen, a movie theater, a fitness center, and two guest suites. Embrace a life of luxury and leisure in this remarkable setting. **Sale Conditions:** None **Schools:** , , * [Request Showing](#), [Photos](#), [History](#), [Maps](#), [Deed](#), [Watch List](#), [Tax Info](#)





Address	Price	Bd & Bth	Living / Avg.	Land Avg.	Lanai	Occ.	FL	DOM
1189 Waimanu Street 3706	\$1,199,000	2 & 2/0	1,034 \$1,160	0 \$inf	0	43%	37	56

Address	Tax Maint. Ass.	Assessed Land	Assessed Building	Assessed Total	Ratio	Year & Remodeled
1189 Waimanu Street 3706	\$345 \$1,223 \$0	\$41,100	\$1,142,100	\$1,183,200	101%	2014 & NA

[1189 Waimanu Street 3706](#) - MLS#: [202409339](#) - Aloha from arguably the best place on the planet for a tropical urban lifestyle. Nestled in proximity to Ala Moana Center, Ala Moana Beach Park, and Ward Village, this exquisite residence offers an unparalleled lifestyle. With its floor-to-ceiling windows, refined interior finishes, and premium Bosch appliances, every detail exudes sophistication. Situated as a corner end unit on the mountain side of the esteemed Waihonua luxury condominium, this home is impeccably maintained. Enjoy access to an array of exceptional building amenities, from an infinity-edge heated pool to a club room with a full kitchen, a movie theater, a fitness center, and two guest suites. Embrace a life of luxury and leisure in this remarkable setting. **Region:** Metro **Neighborhood:** Kakaako **Condition:** Excellent **Parking:** Assigned, Covered - 2, Secured Entry **Total Parking:** 2 **View:** City, Mountain, Sunrise **Frontage:** Other **Pool:** **Zoning:** Kak - Kakaako Community Development Project **Sale Conditions:** None **Schools:** , , * [Request Showing](#), [Photos](#), [History](#), [Maps](#), [Deed](#), [Watch List](#), [Tax Info](#)

DOM = Days on Market, Occ. = Occupancy, FL = Floor Number