

**Ala Wai Terrace 1684 Ala Moana Boulevard Unit 1151, Honolulu 96815 \* Ala Wai Terrace \***

**\$525,000**

Beds: **2**  
Bath: **2/0**  
Living Sq. Ft.: **743**  
Land Sq. Ft.: **0**  
Lanai Sq. Ft.: **129**  
Sq. Ft. Other: **0**  
Total Sq. Ft. **872**  
Maint./Assoc. **\$1,137 / \$0**

MLS#: **202409381**, FS  
Status: **Active**  
List Date & DOM: **05-13-2024 & 65**  
Condition: **Average**  
Frontage: **Other**  
Tax/Year: **\$170/2023**  
Neighborhood: **Waikiki**  
**Flood Zone: Zone AE - Tool**

Year Built: **1968**  
Remodeled:  
Total Parking: **1**  
**Assessed Value**  
Building: **\$473,900**  
Land: **\$110,500**  
Total: **\$584,400**  
Stories / CPR: **15-20 / No**

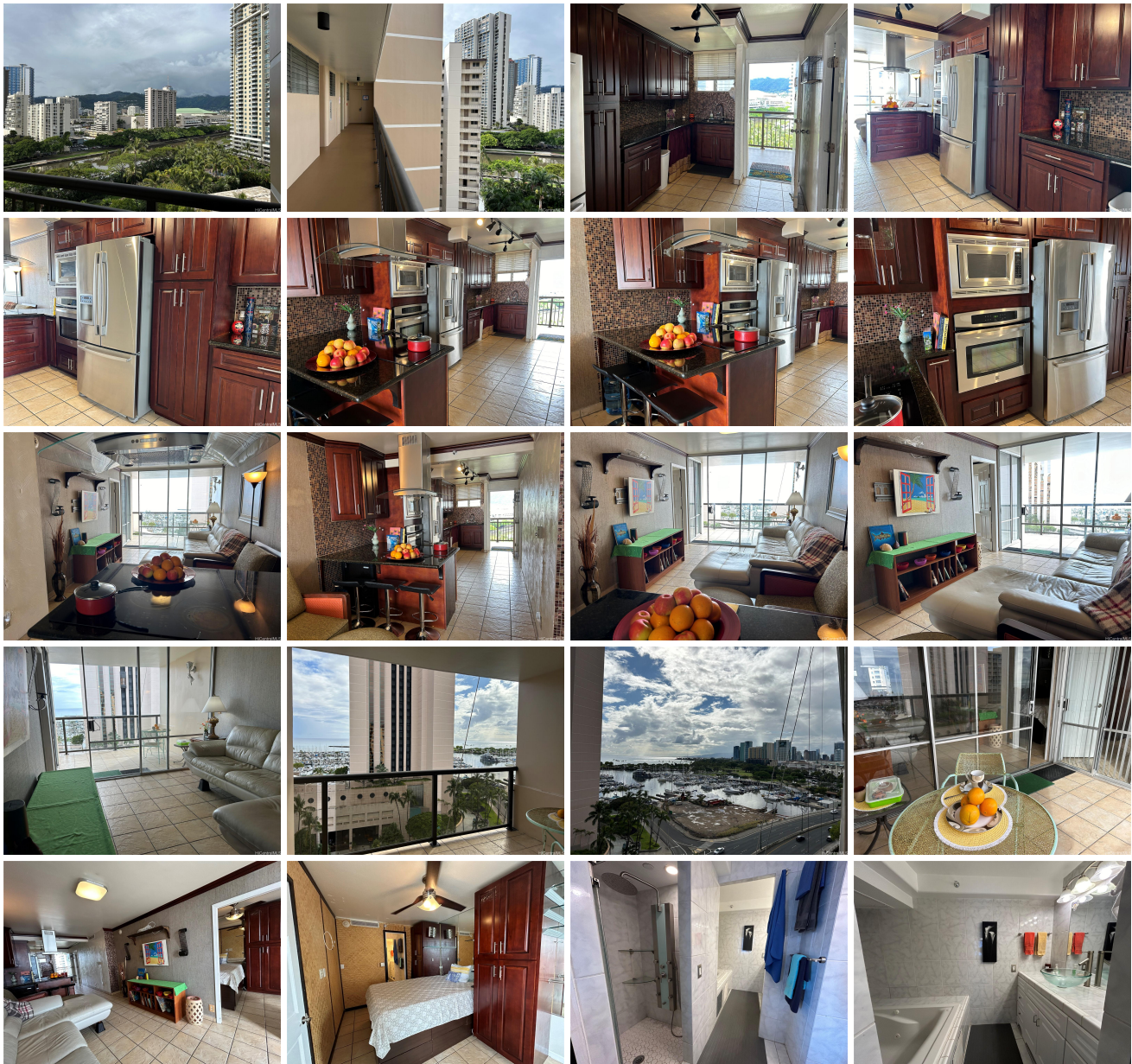
Parking: **Assigned, Open - 1, Secured Entry**

Frontage: **Other**

**Zoning: X2 - Apartment Precinct**

View: **City, Marina/Canal, Mountain, Ocean, Sunset**

**Public Remarks:** Escape to paradise in this charming Waikiki boutique condo with 2 bedrooms, 2 bathrooms (1 bathroom is non-permitted). Enjoy breathtaking views of Magic Island, Ala Moana Beach Park, and the sparkling ocean from your 743 sq. ft. interior retreat. Relax on your 129 sq. ft lanai and watch the sunset, Friday night fireworks, or take in the majestic mountain and marina views from your front door. Your new home features stainless steel appliances, ample counter space, and plenty of cabinet storage. Move-in ready, with 1 assigned parking space and maintenance fee that covers central AC, electricity, hot water, other common expenses, sewer and water. Optional cable TV/internet for \$53.12/mo. While this unit is in move-in ready, it does need some TLC and will be sold in "as-is" condition. I hope that you that you will make your Hawaiian dreams come true in this tranquil oasis. **Sale Conditions:** None **Schools:** [Jefferson](#), [Washington](#), [Kaimuki](#) \* [Request Showing](#), [Photos](#), [History](#), [Maps](#), [Deed](#), [Watch List](#), [Tax Info](#)





Address	Price	Bd & Bth	Living / Avg.	Land   Avg.	Lanai	Occ.	FL	DOM
<a href="#">1684 Ala Moana Boulevard 1151</a>	<b>\$525,000</b>	2 & 2/0	743   \$707	0   \$inf	129	41%	1	65

Address	Tax   Maint.   Ass.	Assessed Land	Assessed Building	Assessed Total	Ratio	Year & Remodeled
<a href="#">1684 Ala Moana Boulevard 1151</a>	\$170   \$1,137   \$0	\$110,500	\$473,900	\$584,400	90%	1968 & NA

[1684 Ala Moana Boulevard 1151](#) - MLS#: [202409381](#) - Escape to paradise in this charming Waikiki boutique condo with 2 bedrooms, 2 bathrooms (1 bathroom is non-permitted). Enjoy breathtaking views of Magic Island, Ala Moana Beach Park, and the sparkling ocean from your 743 sq. ft. interior retreat. Relax on your 129 sq. ft lanai and watch the sunset, Friday night fireworks, or take in the majestic mountain and marina views from your front door. Your new home features stainless steel appliances, ample counter space, and plenty of cabinet storage. Move-in ready, with 1 assigned parking space and maintenance fee that covers central AC, electricity, hot water, other common expenses, sewer and water. Optional cable TV/internet for \$53.12/mo. While this unit is in move-in ready, it does need some TLC and will be sold in "as-is" condition. I hope that you that you will make your Hawaiian dreams come true in this tranquil oasis. **Region:** Metro **Neighborhood:** Waikiki **Condition:** Average **Parking:** Assigned, Open - 1, Secured Entry **Total Parking:** 1 **View:** City, Marina/Canal, Mountain, Ocean, Sunset **Frontage:** Other **Pool:** **Zoning:** X2 - Apartment Precinct **Sale Conditions:** None **Schools:** [Jefferson](#), [Washington](#), [Kaimuki](#) \* [Request Showing](#), [Photos](#), [History](#), [Maps](#), [Deed](#), [Watch List](#), [Tax Info](#)

DOM = Days on Market, Occ. = Occupancy, FL = Floor Number