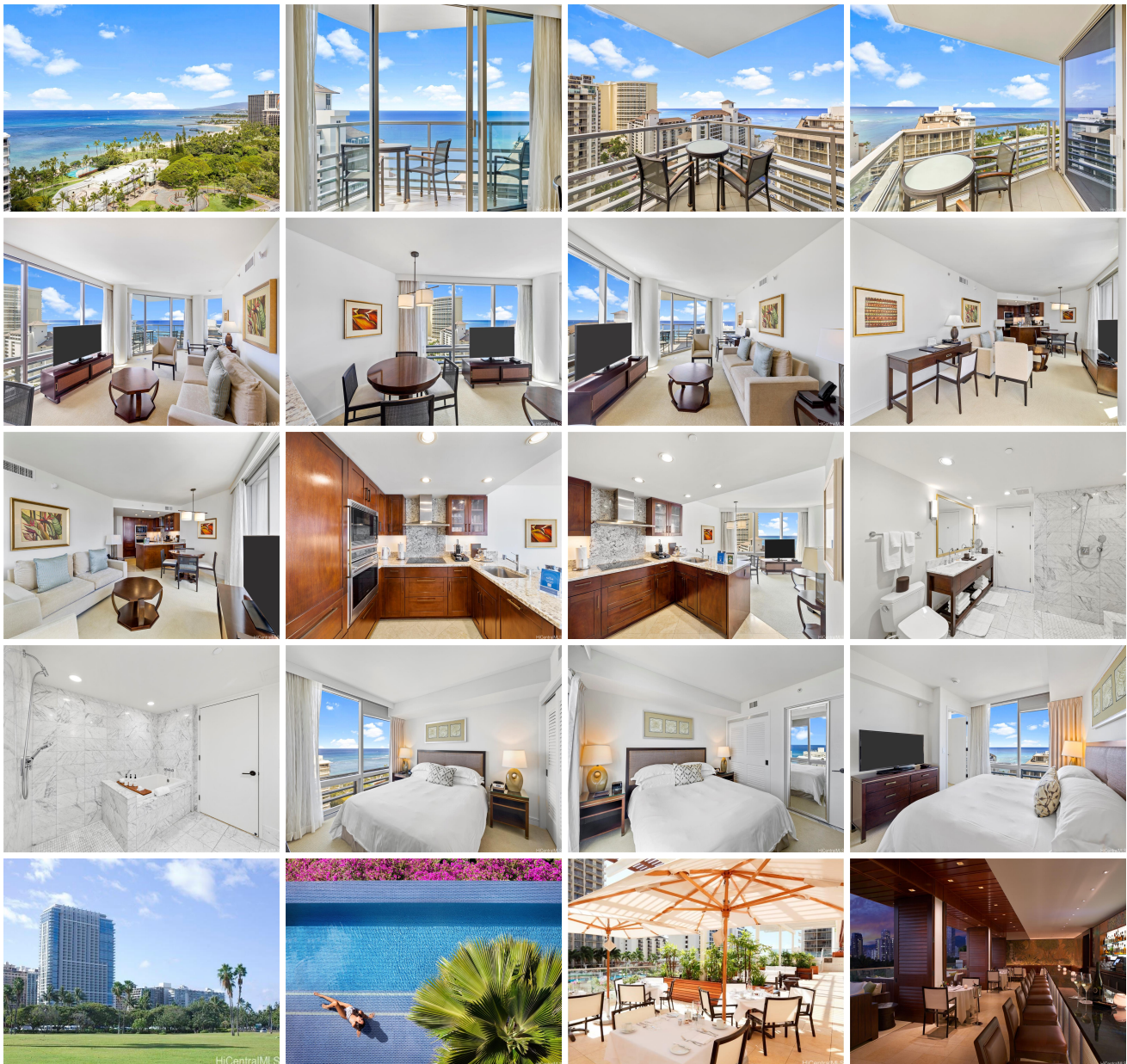


Trump Tower Waikiki 223 Saratoga Road Unit 1922, Honolulu 96815 * \$1,380,000

Beds: 1	MLS#: 202409429, FS	Year Built: 2009
Bath: 1/0	Status: Active	Remodeled:
Living Sq. Ft.: 744	List Date & DOM: 05-06-2024 & 72	Total Parking: 0
Land Sq. Ft.: 0	Condition: Excellent	Assessed Value
Lanai Sq. Ft.: 64	Frontage:	Building: \$556,600
Sq. Ft. Other: 0	Tax/Year: \$1,139/2023	Land: \$413,300
Total Sq. Ft. 808	Neighborhood: Waikiki	Total: \$969,900
Maint./Assoc. \$1,348 / \$0	Flood Zone : Zone AE - Tool	Stories / CPR: 15-20 / No
Parking: Other	Frontage:	
Zoning : X6 - Resort Mixed Use Precinct	View: City, Ocean, Sunset	

Public Remarks: Enjoy luxury living at Ka La'i Waikiki Beach, LXR Hotels & Resorts Hotel/Condo! (former Trump International Hotel Waikiki) This 1 bedroom unit comes fully furnished with all linens & Kitchenware and City and Ocean View! Top notch amenities include infinity pool, concierge, valet parking and a full service spa. Including in purchase are upscale appliances, granite counter tops and travertine tile flooring. Steps away from Waikiki's famous white sand beaches. **Sale Conditions:** None **Schools:** , , * [Request Showing](#), [Photos](#), [History](#), [Maps](#), [Deed](#), [Watch List](#), [Tax Info](#)





Address	Price	Bd & Bth	Living / Avg.	Land Avg.	DOM
223 Saratoga Road 1922	\$1,380,000	1 & 1/0	744 \$1,855	0 \$inf	72

Address	Tax Maint. Ass.	Assessed Land	Assessed Building	Assessed Total	Ratio	Year & Remodeled
223 Saratoga Road 1922	\$1,139 \$1,348 \$0	\$413,300	\$556,600	\$969,900	142%	2009 & NA

[223 Saratoga Road 1922](#) - MLS#: [202409429](#) - Enjoy luxury living at Ka La'i Waikiki Beach, LXR Hotels & Resorts Hotel/Condo! (former Trump International Hotel Waikiki) This 1 bedroom unit comes fully furnished with all linens & Kitchenware and City and Ocean View! Top notch amenities include infinity pool, concierge, valet parking and a full service spa. Including in purchase are upscale appliances, granite counter tops and travertine tile flooring. Steps away from Waikiki's famous white sand beaches. **Region:** Metro **Neighborhood:** Waikiki **Condition:** Excellent **Parking:** Other **Total Parking:** 0 **View:** City, Ocean, Sunset **Frontage:** **Pool:** **Zoning:** X6 - Resort Mixed Use Precinct **Sale Conditions:** None **Schools:** , ,
 * [Request Showing](#), [Photos](#), [History](#), [Maps](#), [Deed](#), [Watch List](#), [Tax Info](#)

DOM = Days on Market