

**Kalia 425 Ena Road Unit 607A, Honolulu 96815 \* \$120,000**

Beds: **1**

MLS#: **202410458, LH**

Year Built: **1960**

Bath: **1/0**

Status: **Active Under Contract**

Remodeled: **2016**

Living Sq. Ft.: **588**

List Date & DOM: **05-03-2024 & 45**

Total Parking: **0**

Land Sq. Ft.: **0**

Condition: **Excellent**

[Assessed Value](#)

Lanai Sq. Ft.: **0**

Frontage: **Other**

Building: **\$209,500**

Sq. Ft. Other: **0**

Tax/Year: **\$87/2023**

Land: **\$88,900**

Total Sq. Ft. **588**

Neighborhood: **Waikiki**

Total: **\$298,400**

Maint./Assoc. **\$760 / \$0**

[Flood Zone](#): **Zone AE - Tool**

Stories / CPR: **4-7 / No**

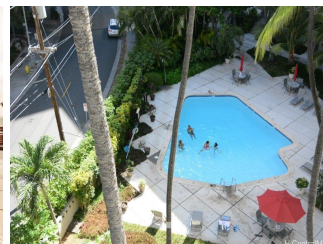
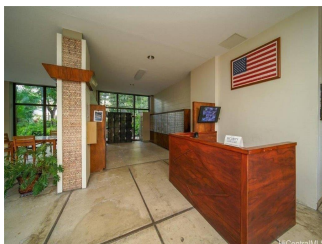
Parking: **None**

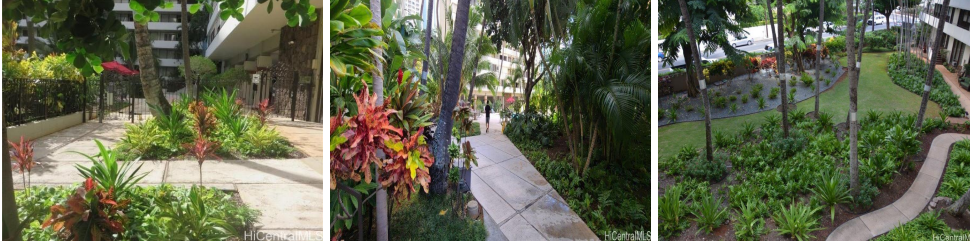
Frontage: **Other**

[Zoning](#): **X2 - Apartment Precinct**

View: **City, Garden**

**Public Remarks:** Large One Bedroom, One Bath unit at The Kalia. Unit was totally gutted and furnished with new kitchen cabinets and matching vanity cabinets in the bathroom. Matching Granite counter tops in the kitchen and bath. Stainless steel refrigerator, stove, sink and microwave. Easy to clean tile floors throughout the unit. Popcorn ceiling removed. Hunter ceiling fans in the Livingroom and bedroom. Lanai was enclosed with hurricane proof double windows and screens. Living room furnished with sofa and love seat. Both let out into beds. Hand made entertainment center with matching book cases. Wooden table with let down leaves and four chairs. Arching floor lamp and cocktail table complete the living room. The bedroom has solid wood queen size bed with matching dresser, mirror and end tables. Table lamps included. The Kalia is at the beginning of Waikiki in the Hobron area. Easy to come and go without the congestion of Waikiki. Enjoy the heated salt water pool, the BBQ area, meditate on the great lawn, relax on the sundeck or in the library. Close to restaurants, Magic island and Ala Moana shopping center and the convention center. **Sale Conditions:** None **Schools:** [Ala Wai](#), [Washington](#), [Kaimuki](#) \* [Request Showing](#), [Photos](#), [History](#), [Maps](#), [Deed](#), [Watch List](#), [Tax Info](#)





Address	Price	Bd & Bth	Living / Avg.	Land   Avg.	DOM
<a href="#">425 Ena Road 607A</a>	\$120,000 LH	1 & 1/0	588   \$204	0   \$inf	45

Address	Tax   Maint.   Ass.	Assessed Land	Assessed Building	Assessed Total	Ratio	Year & Remodeled
<a href="#">425 Ena Road 607A</a>	\$87   \$760   \$0	\$88,900	\$209,500	\$298,400	40%	1960 & 2016

[425 Ena Road 607A](#) - MLS#: [202410458](#) - Large One Bedroom, One Bath unit at The Kalia. Unit was totally gutted and furnished with new kitchen cabinets and matching vanity cabinets in the bathroom. Matching Granite counter tops in the kitchen and bath. Stainless steel refrigerator, stove, sink and microwave. Easy to clean tile floors throughout the unit. Popcorn ceiling removed. Hunter ceiling fans in the Livingroom and bedroom. Lanai was enclosed with hurricane proof double windows and screens. Living room furnished with sofa and love seat. Both let out into beds. Hand made entertainment center with matching book cases. Wooden table with let down leaves and four chairs. Arching floor lamp and cocktail table complete the living room. The bedroom has solid wood queen size bed with matching dresser, mirror and end tables. Table lamps included. The Kalia is at the beginning of Waikiki in the Hobron area. Easy to come and go without the congestion of Waikiki. Enjoy the heated salt water pool, the BBQ area, meditate on the great lawn, relax on the sundeck or in the library. Close to restaurants, Magic island and Ala Moana shopping center and the convention center. **Region:** Metro **Neighborhood:** Waikiki **Condition:** Excellent **Parking:** None **Total Parking:** 0 **View:** City, Garden **Frontage:** Other **Pool:** **Zoning:** X2 - Apartment Precinct **Sale Conditions:** None **Schools:** [Ala Wai](#), [Washington](#), [Kaimuki](#) \* [Request Showing](#), [Photos](#), [History](#), [Maps](#), [Deed](#), [Watch List](#), [Tax Info](#)

DOM = Days on Market