

Continental Plaza 1040 Lunalilo Street Unit 702, Honolulu 96822 * Continental Plaza *

\$750,000

Beds: **2**
 Bath: **2/0**
 Living Sq. Ft.: **1,502**
 Land Sq. Ft.: **0**
 Lanai Sq. Ft.: **0**
 Sq. Ft. Other: **0**
 Total Sq. Ft. **1,502**
 Maint./Assoc. **\$2,151 / \$0**

MLS#: **202410499, FS**
 Status: **Active**
 List Date & DOM: **05-03-2024 & 71**
 Condition: **Excellent, Above Average**
 Frontage:
 Tax/Year: **\$188/2023**
 Neighborhood: **Punchbowl Area**
Flood Zone: Zone X - Tool

Year Built: **1981**
 Remodeled: **2021**
 Total Parking: **2**
[Assessed Value](#)
 Building: **\$460,000**
 Land: **\$185,200**
 Total: **\$100,000**
 Stories / CPR: **8-14 / No**

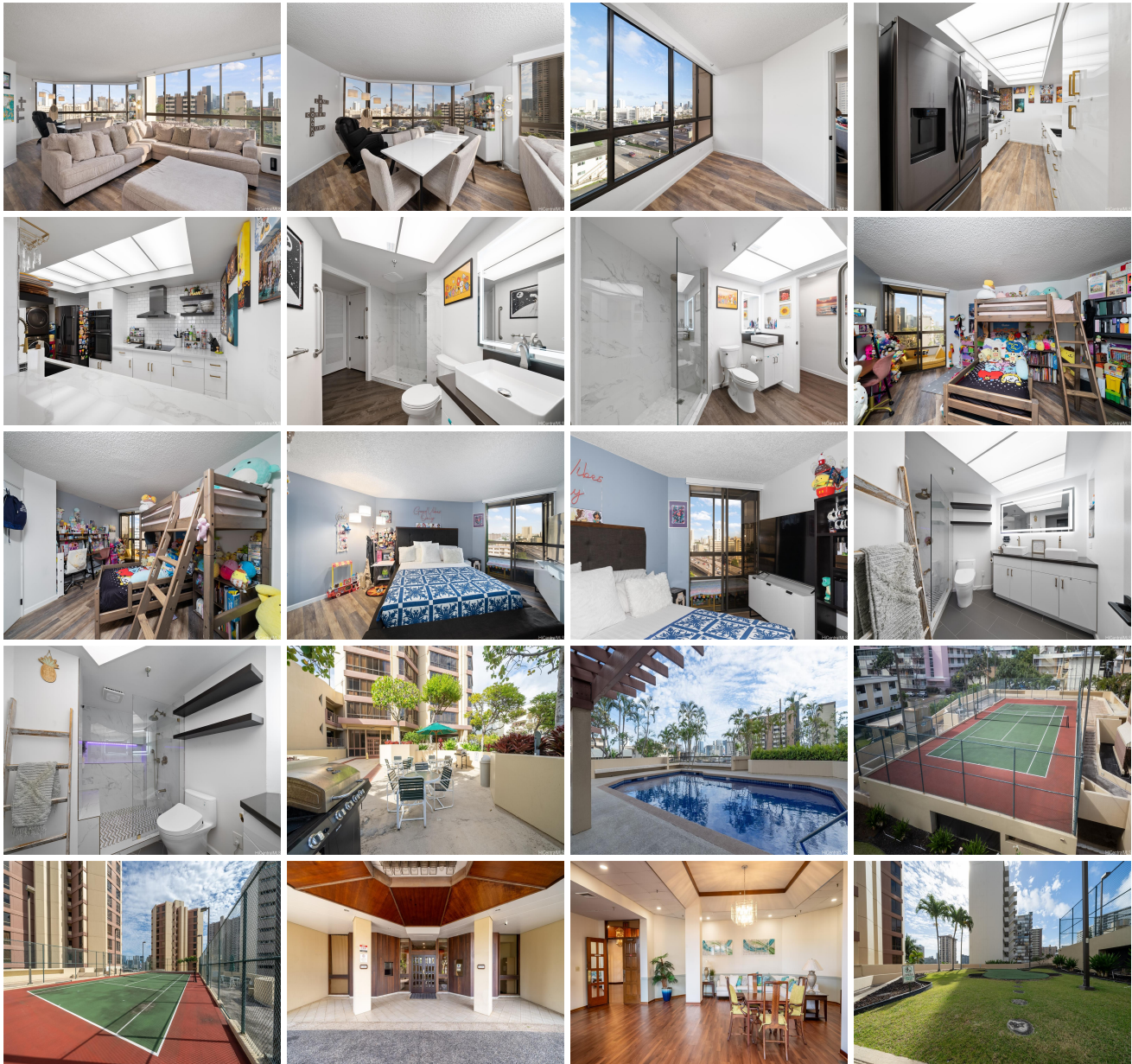
Parking: **Assigned, Covered - 2**

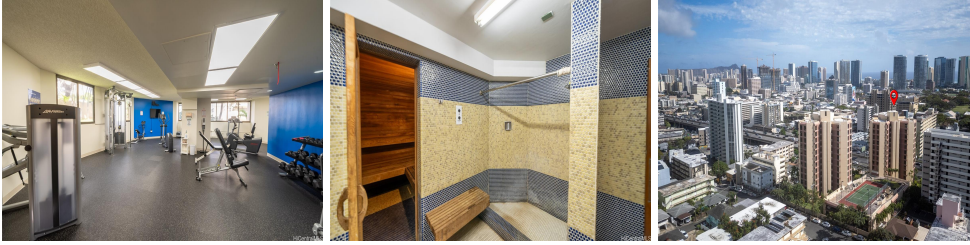
Zoning: 05 - R-5 Residential District

Frontage:

View: **Cemetery, Diamond Head, Ocean**

Public Remarks: Rarely available spacious 2 bedrooms 2 bathrooms 2 parking stalls secured building conveniently located. Fantastic ocean views from your living room and double pane windows to keep unit quiet from outside noise. Bathrooms and kitchen fully renovated with Samsung appliances. Building features man amenities including a beautiful pool, BBQ areas, tennis courts, gym, meeting rooms, and more! HOA includes Central AC, cable, internet, sewer, water. Spacious unit with large living room, bedrooms and a potential office room. Building has so much to offer and unit is immaculately maintained! Must see to appreciate! **Sale Conditions:** None **Schools:** [Lincoln](#), [Stevenson](#), [Roosevelt](#) * [Request Showing](#), [Photos](#), [History](#), [Maps](#), [Deed](#), [Watch List](#), [Tax Info](#)





Address	Price	Bd & Bth	Living / Avg.	Land Avg.	Lanai	Occ.	FL	DOM
1040 Lunalilo Street 702	\$750,000	2 & 2/0	1,502 \$499	0 \$inf	0	70%	7	71

Address	Tax Maint. Ass.	Assessed Land	Assessed Building	Assessed Total	Ratio	Year & Remodeled
1040 Lunalilo Street 702	\$188 \$2,151 \$0	\$185,200	\$460,000	\$100,000	750%	1981 & 2021

[1040 Lunalilo Street 702](#) - MLS#: [202410499](#) - Rarely available spacious 2 bedrooms 2 bathrooms 2 parking stalls secured building conveniently located. Fantastic ocean views from your living room and double pane windows to keep unit quiet from outside noise. Bathrooms and kitchen fully renovated with Samsung appliances. Building features man amenities including a beautiful pool, BBQ areas, tennis courts, gym, meeting rooms, and more! HOA includes Central AC, cable, internet, sewer, water. Spacious unit with large living room, bedrooms and a potential office room. Building has so much to offer and unit is immaculately maintained! Must see to appreciate! **Region:** Metro **Neighborhood:** Punchbowl Area **Condition:** Excellent, Above Average **Parking:** Assigned, Covered - 2 **Total Parking:** 2 **View:** Cemetery, Diamond Head, Ocean **Frontage:** **Pool:** **Zoning:** 05 - R-5 Residential District **Sale Conditions:** None **Schools:** [Lincoln](#), [Stevenson](#), [Roosevelt](#) * [Request Showing](#), [Photos](#), [History](#), [Maps](#), [Deed](#), [Watch List](#), [Tax Info](#)

DOM = Days on Market, Occ. = Occupancy, FL = Floor Number