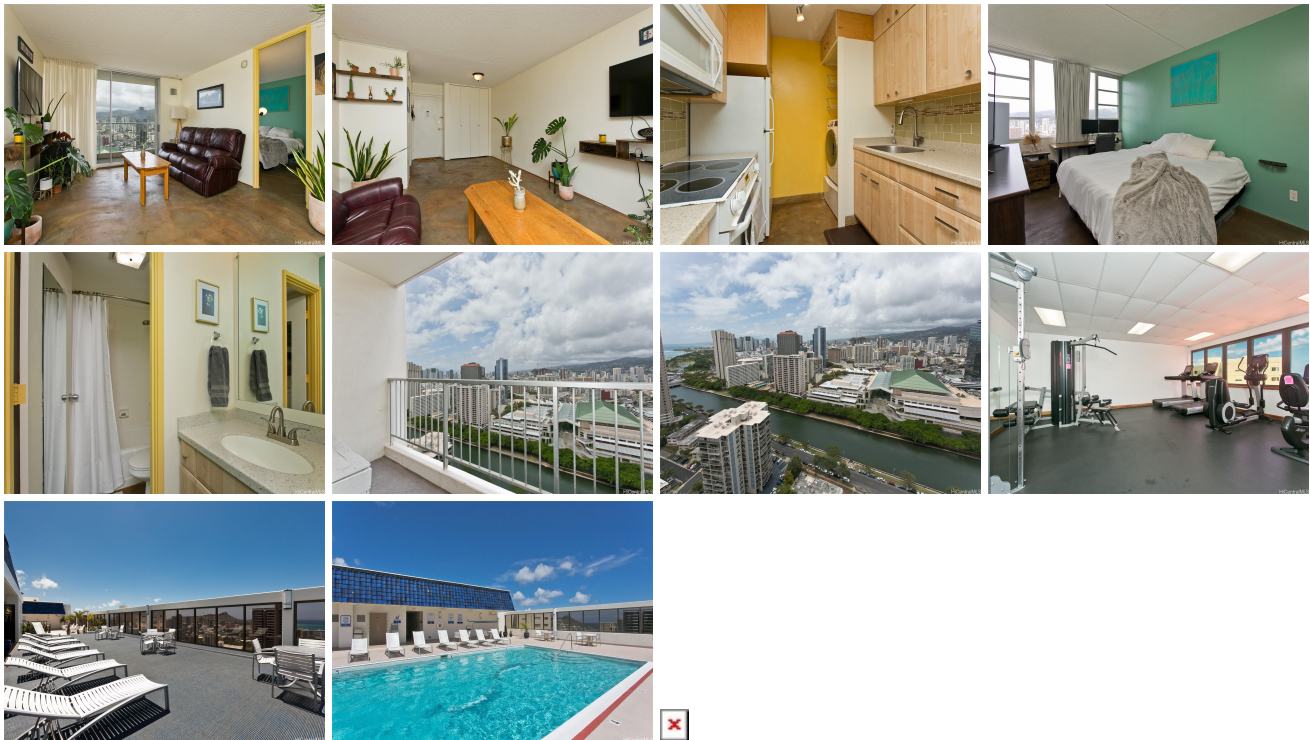


Villa On Eaton Square 400 Hobron Lane Unit 3212, Honolulu 96815 * Villa On Eaton Square

*** \$259,000 * Originally \$278,000**

Beds: 1	MLS#: 202410560, LH	Year Built: 1974
Bath: 1/0	Status: Active	Remodeled:
Living Sq. Ft.: 582	List Date & DOM: 05-13-2024 & 65	Total Parking: 1
Land Sq. Ft.: 0	Condition: Above Average	Assessed Value
Lanai Sq. Ft.: 48	Frontage: Stream/Canal	Building: \$414,000
Sq. Ft. Other: 0	Tax/Year: \$138/2023	Land: \$59,600
Total Sq. Ft. 630	Neighborhood: Waikiki	Total: \$473,600
Maint./Assoc. \$839 / \$0	Flood Zone : Zone AO - Tool	Stories / CPR: 21+ / No
Parking: Covered - 1, Open - 1	Frontage: Stream/Canal	
Zoning : X2 - Apartment Precinct	View: City, Coastline, Marina/Canal, Mountain, Ocean, Sunset	

Public Remarks: PRICE ADJUSTMENT, MOTIVATED SELLERS!! Step into urban living with this 1 bedroom/1 bathroom and enjoy views of the city from your lanai! Situated on the 32nd floor, you will have the chance to enjoy the superb sunsets from your living room. Complete with an efficient kitchen and spacious living area, you'll find everything you need in this unit! One of the many highlights of this exceptional condo is its amenities. This includes a BBQ deck, perfect for hosting gatherings or simply enjoying al fresco dining while soaking in breathtaking sunsets over the city skyline and numerous shops on the ground level. For those seeking relaxation and recreation, look no further than taking a dip in the sparkling salted swimming pool, unwind on the serene rooftop, or stay active in the fitness center. With a wealth of amenities at your fingertips, including secure parking, and an incredible 360° view of Honolulu, this condo offers the ultimate urban oasis. Don't miss your chance to experience city living at its finest. Schedule your showing today! Special assessment is short term, until December 2024. OPEN HOUSE 7/21/24, 2P-5P. **Sale Conditions:** None **Schools:** [Jefferson](#), [Washington](#), [Kaimuki](#) * [Request Showing](#), [Photos](#), [History](#), [Maps](#), [Deed](#), [Watch List](#), [Tax Info](#)



Address	Price	Bd & Bth	Living / Avg.	Land Avg.	Lanai	Occ.	FL	DOM
400 Hobron Lane 3212	\$259,000 LH	1 & 1/0	582 \$445	0 \$inf	48	49%	32	65

Address	Tax Maint. Ass.	Assessed Land	Assessed Building	Assessed Total	Ratio	Year & Remodeled
400 Hobron Lane 3212	\$138 \$839 \$0	\$59,600	\$414,000	\$473,600	55%	1974 & NA

[400 Hobron Lane 3212](#) - MLS#: [202410560](#) - Original price was \$278,000 - PRICE ADJUSTMENT, MOTIVATED SELLERS!! Step into urban living with this 1 bedroom/1 bathroom and enjoy views of the city from your lanai! Situated on the 32nd floor, you will have the chance to enjoy the superb sunsets from your living room. Complete with an efficient kitchen and spacious living area, you'll find everything you need in this unit! One of the many highlights of this exceptional condo is its amenities. This includes a BBQ deck, perfect for hosting gatherings or simply enjoying al fresco dining while soaking in breathtaking sunsets over the city skyline and numerous shops on the ground level. For those seeking relaxation and recreation, look no further than taking a dip in the sparkling salted swimming pool, unwind on the serene rooftop, or stay active in the fitness center. With a wealth of amenities at your fingertips, including secure parking, and an incredible 360° view of Honolulu, this condo offers the ultimate urban oasis. Don't miss your chance to experience city living at its finest. Schedule your showing today! Special assessment is short term, until December 2024. OPEN HOUSE 7/21/24, 2P-5P. **Region:** Metro **Neighborhood:** Waikiki **Condition:** Above Average **Parking:** Covered - 1, Open - 1 **Total Parking:** 1 **View:** City, Coastline, Marina/Canal, Mountain, Ocean, Sunset **Frontage:** Stream/Canal **Pool:** **Zoning:** X2 - Apartment Precinct **Sale Conditions:** None **Schools:** [Jefferson](#), [Washington](#), [Kaimuki](#) * [Request Showing](#), [Photos](#), [History](#), [Maps](#), [Deed](#), [Watch List](#), [Tax Info](#)

DOM = Days on Market, Occ. = Occupancy, FL = Floor Number