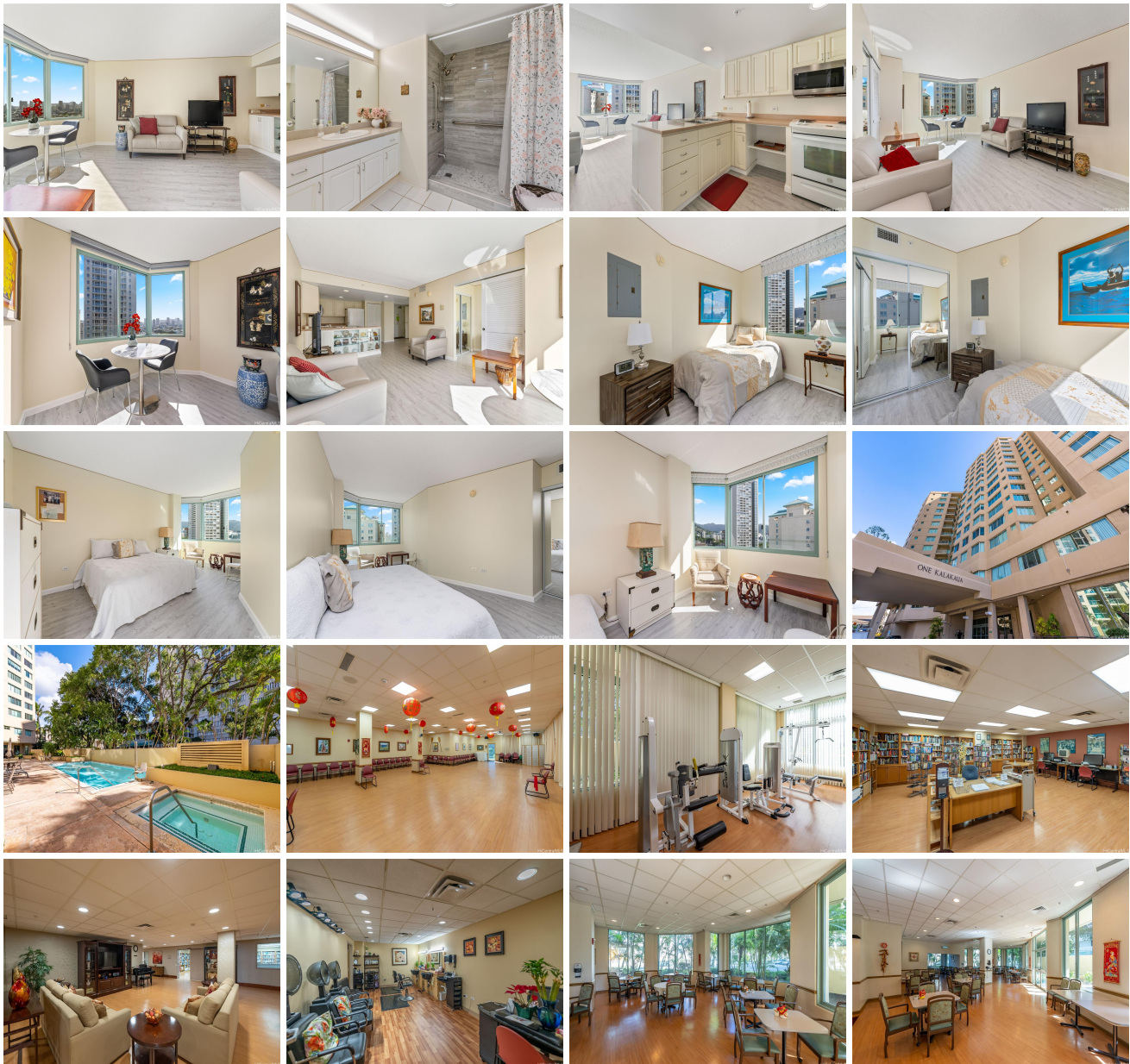


One Kalakaua Senior Living 1314 Kalakaua Avenue Unit 1407, Honolulu 96826 * One Kalakaua Senior Living * \$378,000

Beds: 2	MLS#: 202410567, FS	Year Built: 1996
Bath: 1/0	Status: Active	Remodeled:
Living Sq. Ft.: 772	List Date & DOM: 05-03-2024 & 75	Total Parking: 1
Land Sq. Ft.: 0	Condition: Excellent	Assessed Value
Lanai Sq. Ft.: 0	Frontage:	Building: \$514,300
Sq. Ft. Other: 0	Tax/Year: \$92/2024	Land: \$64,300
Total Sq. Ft. 772	Neighborhood: Makiki Area	Total: \$578,600
Maint./Assoc. \$2,434 / \$0	Flood Zone : Zone X - Tool	Stories / CPR: 15-20 / No
Parking: Assigned, Covered - 1, Guest	Frontage:	
Zoning : 33 - BMX-3 Community Business M	View: Diamond Head, Mountain	

Public Remarks: Own an upgraded unit in the highly desirable full service retirement community in the heart of Honolulu. Senior living at its best with extensive care and support. Newly renovated bathroom with ADA features and Luxury Vinyl Planks throughout. Situated close to the elevator for residents to enjoy the many amenities and services; meals, weekly housekeeping, heated pool, jacuzzi, fitness center, library/ computer room, dining room, organized activities in the recreation areas, beauty salon, Hale Ola Kino (separate Arcadia Family operated Skilled Nursing Care on the 2nd floor). This unit comes with one parking stall in a secured garage. **Sale Conditions:** None **Schools:** , , * [Request Showing](#), [Photos](#), [History](#), [Maps](#), [Deed](#), [Watch List](#), [Tax Info](#)





Address	Price	Bd & Bth	Living / Avg.	Land Avg.	Lanai	Occ.	FL	DOM
1314 Kalakaua Avenue 1407	\$378,000	2 & 1/0	772 \$490	0 \$inf	0	42%	14	75

Address	Tax Maint. Ass.	Assessed Land	Assessed Building	Assessed Total	Ratio	Year & Remodeled
1314 Kalakaua Avenue 1407	\$92 \$2,434 \$0	\$64,300	\$514,300	\$578,600	65%	1996 & NA

[1314 Kalakaua Avenue 1407](#) - MLS#: [202410567](#) - Own an upgraded unit in the highly desirable full service retirement community in the heart of Honolulu. Senior living at its best with extensive care and support. Newly renovated bathroom with ADA features and Luxury Vinyl Planks throughout. Situated close to the elevator for residents to enjoy the many amenities and services; meals, weekly housekeeping, heated pool, jacuzzi, fitness center, library/ computer room, dining room, organized activities in the recreation areas, beauty salon, Hale Ola Kino (separate Arcadia Family operated Skilled Nursing Care on the 2nd floor). This unit comes with one parking stall in a secured garage. **Region:** Metro **Neighborhood:** Makiki Area **Condition:** Excellent **Parking:** Assigned, Covered - 1, Guest **Total Parking:** 1 **View:** Diamond Head, Mountain **Frontage:** **Pool:** **Zoning:** 33 - BMX-3 Community Business M **Sale Conditions:** None **Schools:** , , * [Request Showing](#), [Photos](#), [History](#), [Maps](#), [Deed](#), [Watch List](#), [Tax Info](#)

DOM = Days on Market, Occ. = Occupancy, FL = Floor Number