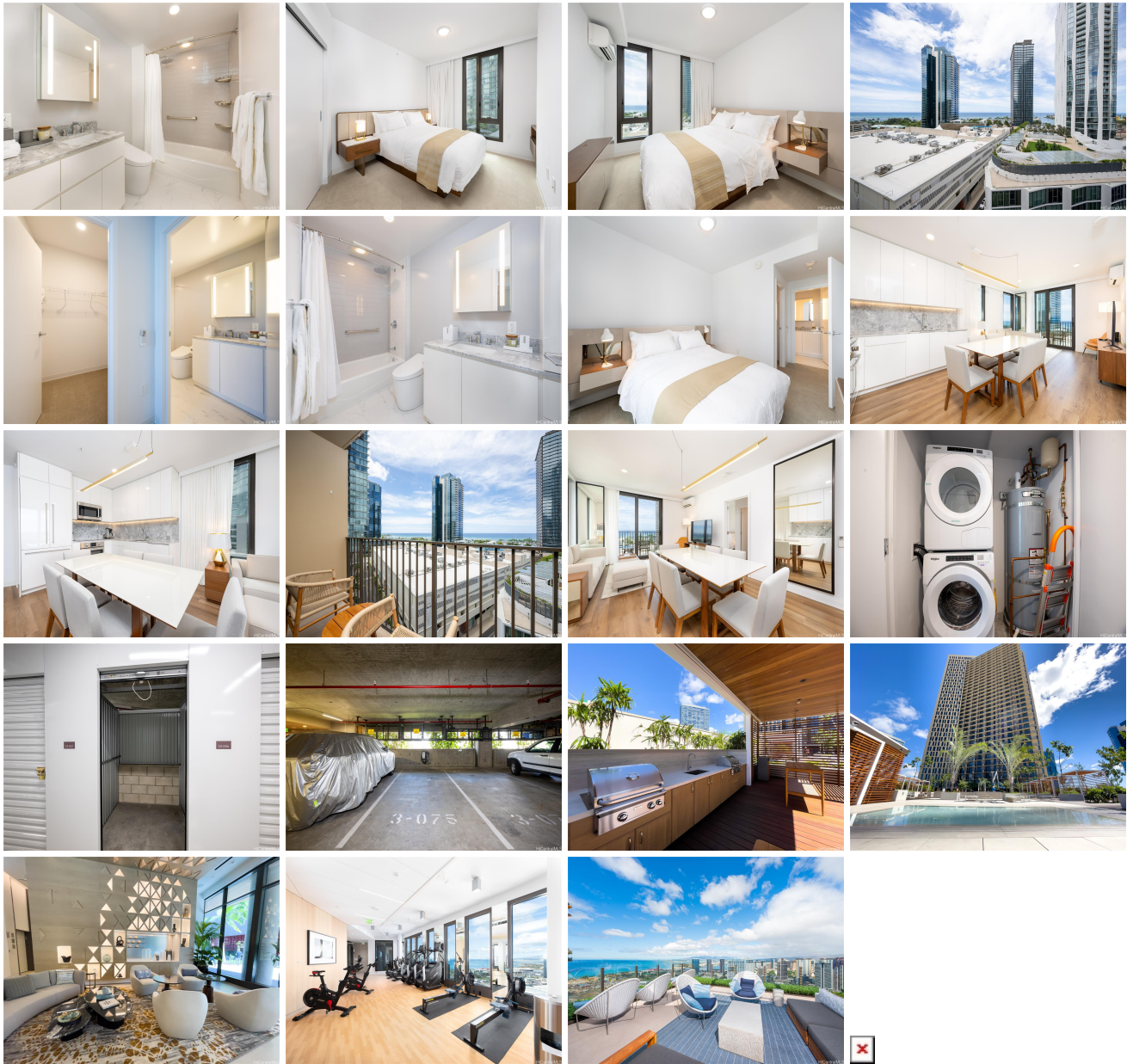


**Aalii 987 Queen Street Unit 1202, Honolulu 96814 \* Aalii \* \$1,450,000**

Beds: <b>2</b>	MLS#: <b>202410622, FS</b>	Year Built: <b>2019</b>
Bath: <b>2/0</b>	Status: <b>Active</b>	Remodeled:
Living Sq. Ft.: <b>826</b>	List Date & DOM: <b>05-12-2024 &amp; 49</b>	Total Parking: <b>1</b>
Land Sq. Ft.: <b>0</b>	Condition: <b>Excellent</b>	<a href="#">Assessed Value</a>
Lanai Sq. Ft.: <b>41</b>	Frontage:	Building: <b>\$1,124,200</b>
Sq. Ft. Other: <b>0</b>	Tax/Year: <b>\$487/2023</b>	Land: <b>\$37,500</b>
Total Sq. Ft. <b>867</b>	Neighborhood: <b>Kakaako</b>	Total: <b>\$1,161,700</b>
Maint./Assoc. <b>\$1,126 / \$28</b>	<a href="#">Flood Zone</a> : <b>Zone AE - Tool</b>	Stories / CPR: <b>8-14 / No</b>
Parking: <b>Assigned, Covered - 1</b>	Frontage:	
<a href="#">Zoning</a> : <b>Kak - Kakaako Community Development Project</b>	View: <b>City, Ocean</b>	

**Public Remarks:** 2bed/2bath/1 full size pkg with Level 2 -EV Charging Station. Also STORAGE ROOM . Unit come with the original turnkey package designed by Rottet Studio, fully furnished with window shades. Ready to move in. Close distance to Ala Moana Beach Park, theaters, dining, and world-class shopping at Ala Moana Shopping Center. **Sale Conditions:** None  
**Schools:** [Kaahumanu](#), [Stevenson](#), [Mckinley](#) \* [Request Showing](#), [Photos](#), [History](#), [Maps](#), [Deed](#), [Watch List](#), [Tax Info](#)



Address	Price	Bd & Bth	Living / Avg.	Land   Avg.	Lanai	Occ.	FL	DOM
<a href="#">987 Queen Street 1202</a>	<a href="#">\$1,450,000</a>	2 & 2/0	826   \$1,755	0   \$inf	41	54%	12	49

Address	Tax   Maint.   Ass.	Assessed Land	Assessed Building	Assessed Total	Ratio	Year & Remodeled
<a href="#">987 Queen Street 1202</a>	\$487   \$1,126   \$28	\$37,500	\$1,124,200	\$1,161,700	125%	2019 & NA

[987 Queen Street 1202](#) - MLS#: [202410622](#) - 2bed/2bath/1 full size pkg with Level 2 -EV Charging Station. Also STORAGE ROOM . Unit come with the original turnkey package designed by Rottet Studio, fully furnished with window shades. Ready to move in. Close distance to Ala Moana Beach Park, theaters, dining, and world-class shopping at Ala Moana Shopping Center. **Region:** Metro **Neighborhood:** Kakaako **Condition:** Excellent **Parking:** Assigned, Covered - 1 **Total Parking:** 1 **View:** City, Ocean **Frontage:** Pool: **Zoning:** Kak - Kakaako Community Development Project **Sale Conditions:** None **Schools:** [Kaahumanu](#), [Stevenson](#), [Mckinley](#) \* [Request Showing](#), [Photos](#), [History](#), [Maps](#), [Deed](#), [Watch List](#), [Tax Info](#)

DOM = Days on Market, Occ. = Occupancy, FL = Floor Number