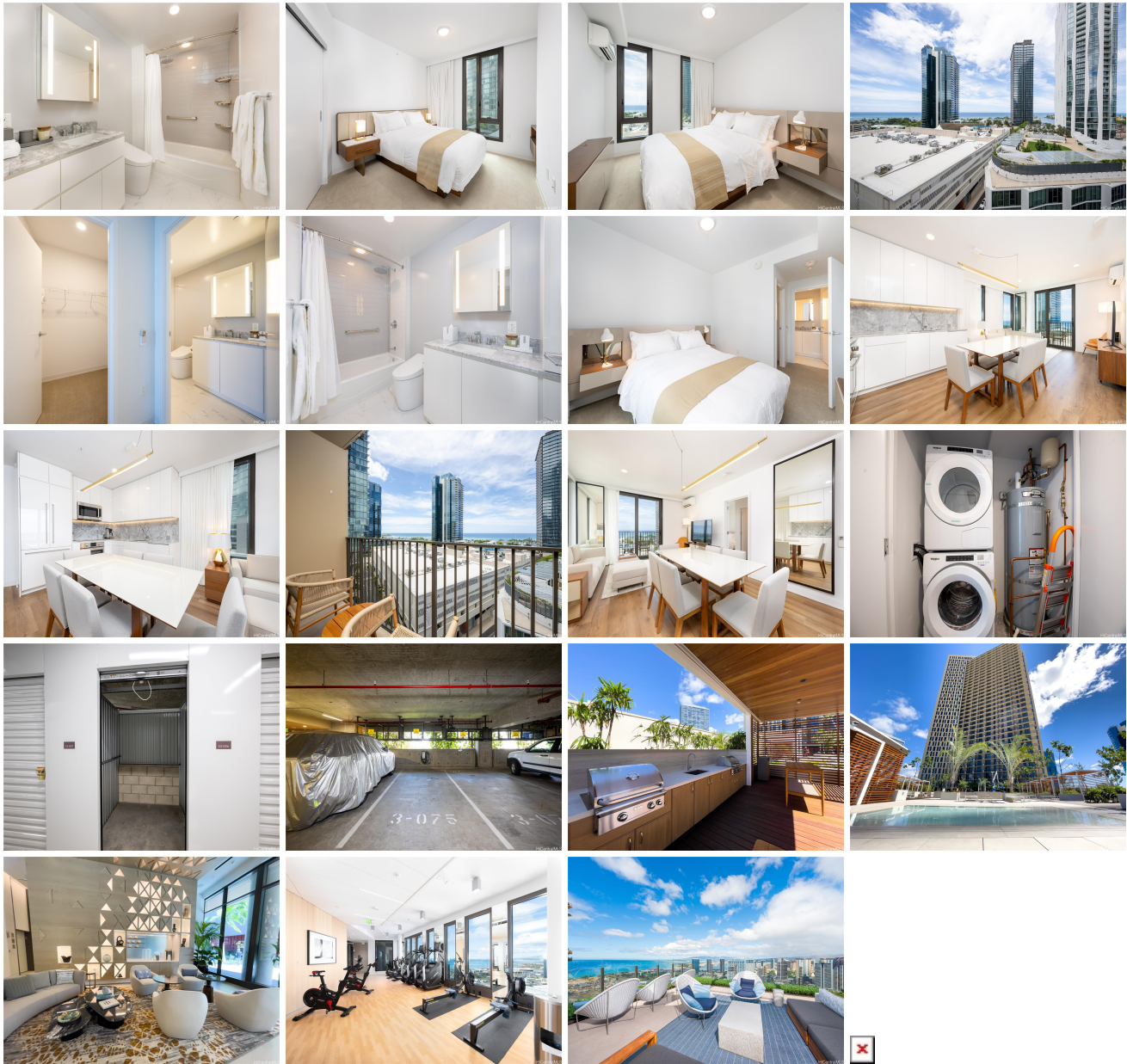


Aalii 987 Queen Street Unit 1202, Honolulu 96814 * \$1,450,000

Beds: 2	MLS#: <u>202410622, FS</u>	Year Built: 2019
Bath: 2/0	Status: Active	Remodeled:
Living Sq. Ft.: 826	List Date & DOM: 05-12-2024 & 46	Total Parking: 1
Land Sq. Ft.: 0	Condition: Excellent	Assessed Value
Lanai Sq. Ft.: 41	Frontage:	Building: \$1,124,200
Sq. Ft. Other: 0	Tax/Year: \$487/2023	Land: \$37,500
Total Sq. Ft. 867	Neighborhood: Kakaako	Total: \$1,161,700
Maint./Assoc. \$1,126 / \$28	Flood Zone : Zone AE - Tool	Stories / CPR: 8-14 / No
Parking: Assigned, Covered - 1	Frontage:	
Zoning : Kak - Kakaako Community Development Project	View: City, Ocean	

Public Remarks: 2bed/2bath/1 full size pkg with Level 2 -EV Charging Station. Also STORAGE ROOM . Unit come with the original turnkey package designed by Rottet Studio, fully furnished with window shades. Ready to move in. Close distance to Ala Moana Beach Park, theaters, dining, and world-class shopping at Ala Moana Shopping Center. **Sale Conditions:** None
Schools: [Kaahumanu](#), [Stevenson](#), [Mckinley](#) * [Request Showing](#), [Photos](#), [History](#), [Maps](#), [Deed](#), [Watch List](#), [Tax Info](#)



Address	Price	Bd & Bth	Living / Avg.	Land Avg.	DOM
987 Queen Street 1202	\$1,450,000	2 & 2/0	826 \$1,755	0 \$inf	46

Address	Tax Maint. Ass.	Assessed Land	Assessed Building	Assessed Total	Ratio	Year & Remodeled
987 Queen Street 1202	\$487 \$1,126 \$28	\$37,500	\$1,124,200	\$1,161,700	125%	2019 & NA

[987 Queen Street 1202](#) - MLS#: [202410622](#) - 2bed/2bath/1 full size pkg with Level 2 -EV Charging Station. Also STORAGE ROOM . Unit come with the original turnkey package designed by Rottet Studio, fully furnished with window shades. Ready to move in. Close distance to Ala Moana Beach Park, theaters, dining, and world-class shopping at Ala Moana Shopping Center. **Region:** Metro **Neighborhood:** Kakaako **Condition:** Excellent **Parking:** Assigned, Covered - 1 **Total Parking:** 1 **View:** City, Ocean **Frontage:** Pool: **Zoning:** Kak - Kakaako Community Development Project **Sale Conditions:** None **Schools:** [Kaahumanu](#), [Stevenson](#), [Mckinley](#) * [Request Showing](#), [Photos](#), [History](#), [Maps](#), [Deed](#), [Watch List](#), [Tax Info](#)

DOM = Days on Market