

**The Ritz-Carlton Residences - 383 Kalaim 2139 Kuhio Avenue Unit 3307, Honolulu 96815 \***

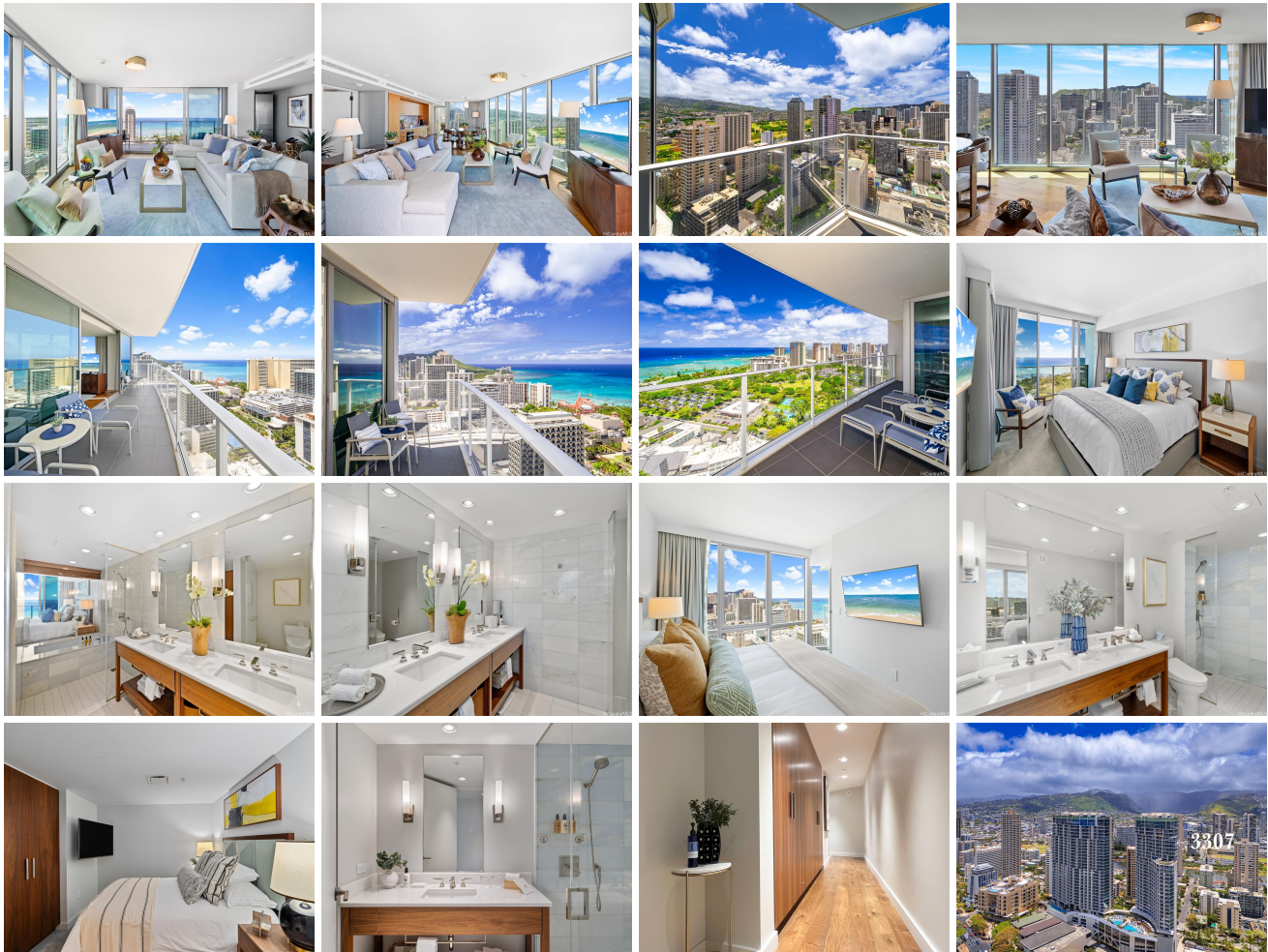
**The Ritz-Carlton Residences - 383 Kalaim \* \$3,600,000**

Beds: <b>3</b>	MLS#: <b>202410625, FS</b>	Year Built: <b>2018</b>
Bath: <b>3/0</b>	Status: <b>Active</b>	Remodeled:
Living Sq. Ft.: <b>1,601</b>	List Date & DOM: <b>06-24-2024 &amp; 6</b>	Total Parking: <b>0</b>
Land Sq. Ft.: <b>0</b>	Condition: <b>Excellent, Above Average</b>	<a href="#">Assessed Value</a>
Lanai Sq. Ft.: <b>250</b>	Frontage:	Building: <b>\$3,207,000</b>
Sq. Ft. Other: <b>0</b>	Tax/Year: <b>\$4,209/2023</b>	Land: <b>\$316,700</b>
Total Sq. Ft. <b>1,851</b>	Neighborhood: <b>Waikiki</b>	Total: <b>\$3,523,700</b>
Maint./Assoc. <b>\$3,408 / \$0</b>	<a href="#">Flood Zone</a> : <b>Zone AO - Tool</b>	Stories / CPR: <b>21+ / No</b>
Parking: <b>None</b>	Frontage:	

**Zoning: X6 - Resort Mixed Use Precinct**

View: **City, Coastline, Diamond Head, Ocean, Sunrise, Sunset**

**Public Remarks:** Step inside this fully furnished 3-bedroom oasis to elevate your everyday experience. This exceptional high-floor corner unit in Diamond Head Tower (Tower 2) provides nearly 270° panoramic views, allowing you to enjoy both ocean and mountain vistas. The spacious layout invites ultimate relaxation, leading to an expansive lanai facing the ocean and another lanai that faces the majestic mountains, and a soaking tub. The Ritz-Carlton Residences is pet friendly. An array of lifestyle options, including room service, on-site and nearby restaurants, cleaning and custodian services, and concierge assistance are available. A residential team is at your service. Comprehensive hospitality creates a comfortable way of life. Conveniently situated in the heart of Waikiki, you're just moments away from world-class shopping, delectable dining, and the beach. Live the island dream in this unparalleled paradise! **Sale Conditions:** None **Schools:** , , \* [Request Showing, Photos, History, Maps, Deed, Watch List, Tax Info](#)



Address	Price	Bd & Bth	Living / Avg.	Land   Avg.	Lanai	Occ.	FL	DOM
<a href="#">2139 Kuhio Avenue 3307</a>	<a href="#">\$3,600,000</a>	3 & 3/0	1,601   \$2,249	0   \$inf	250	48%	32	6

Address	Tax   Maint.   Ass.	Assessed Land	Assessed Building	Assessed Total	Ratio	Year & Remodeled
<a href="#">2139 Kuhio Avenue 3307</a>	\$4,209   \$3,408   \$0	\$316,700	\$3,207,000	\$3,523,700	102%	2018 & NA

[2139 Kuhio Avenue 3307](#) - MLS#: [202410625](#) - Step inside this fully furnished 3-bedroom oasis to elevate your everyday experience. This exceptional high-floor corner unit in Diamond Head Tower (Tower 2) provides nearly 270° panoramic views, allowing you to enjoy both ocean and mountain vistas. The spacious layout invites ultimate relaxation, leading to an expansive lanai facing the ocean and another lanai that faces the majestic mountains, and a soaking tub. The Ritz-Carlton Residences is pet friendly. An array of lifestyle options, including room service, on-site and nearby restaurants, cleaning and custodian services, and concierge assistance are available. A residential team is at your service. Comprehensive hospitality creates a comfortable way of life. Conveniently situated in the heart of Waikiki, you're just moments away from world-class shopping, delectable dining, and the beach. Live the island dream in this unparalleled paradise! **Region:** Metro **Neighborhood:** Waikiki **Condition:** Excellent, Above Average **Parking:** None **Total Parking:** 0 **View:** City, Coastline, Diamond Head, Ocean, Sunrise, Sunset **Frontage:** Pool: **Zoning:** X6 - Resort Mixed Use Precinct **Sale Conditions:** None **Schools:** , , \* [Request Showing](#), [Photos](#), [History](#), [Maps](#), [Deed](#), [Watch List](#), [Tax Info](#)

DOM = Days on Market, Occ. = Occupancy, FL = Floor Number