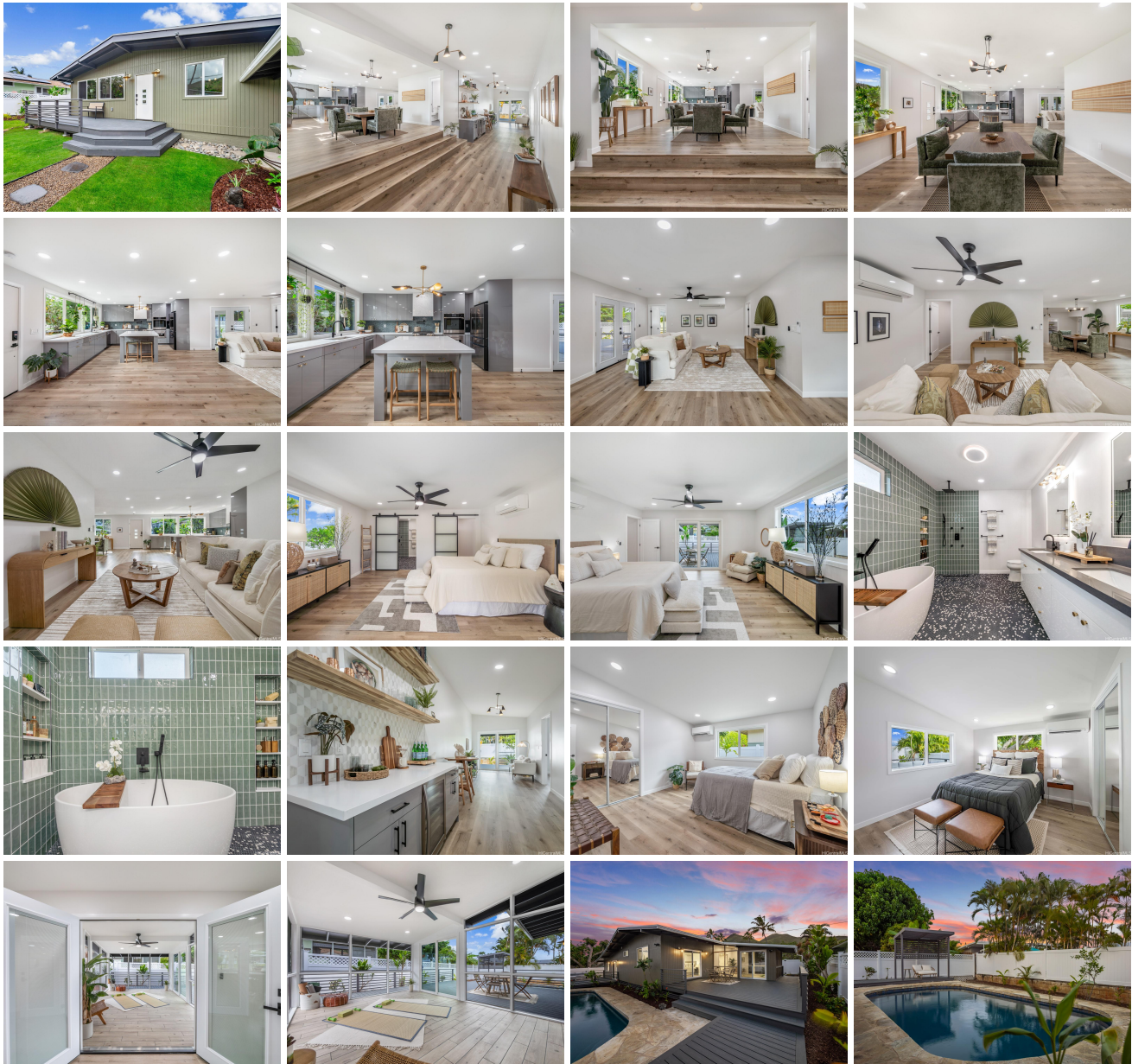


340 Ilimano Street, Kailua 96734 * \$2,190,000

Beds: 4	MLS#: 202410661, FS	Year Built: 1958
Bath: 2/0	Status: Active Under Contract	Remodeled: 1975
Living Sq. Ft.: 2,020	List Date & DOM: 05-06-2024 & 22	Total Parking: 4
Land Sq. Ft.: 10,000	Condition: Excellent	Assessed Value
Lanai Sq. Ft.: 902	Frontage: Other	Building: \$393,200
Sq. Ft. Other: 0	Tax/Year: \$416/2023	Land: \$1,274,000
Total Sq. Ft. 2,922	Neighborhood: Kalaheo Hillside	Total: \$1,667,200
Maint./Assoc. \$0 / \$0	Flood Zone : Zone X - Tool	Stories / CPR: Split Level / No
Parking: 3 Car+, Carport, Driveway	Frontage: Other	
Zoning : 03 - R10 - Residential District	View: Mountain, Sunrise	

Public Remarks: Your Kailua oasis awaits with this newly renovated home located on a prime street in Kalaheo Hillside. This transformative remodel evokes a mid-century modern and Japanese zen garden aesthetic, utilizing the finest materials with mindful attention to detail. Dramatic open living spaces present high ceilings and oversized windows, a sun-drenched habitat connected to a tranquil lanai, and a shimmering custom pool. The generous interior flows through the kitchen, where you'll cook and converse around the huge prep + dining island complimented by a new appliance suite. Ample square footage expands across 4 bedrooms, 2 luxurious baths, and a thoughtful corridor, seamlessly merging the spaces together. Host dinner parties on the lanais, play in the grassy yard, and entertain in one of the inviting nooks throughout the outdoor space. Use the ground-level suite as your yoga room or versatile flex space for an office, gym, or creative studio, complete with indoor/outdoor access. Other modern luxuries include newly installed split system air conditioning, owned solar power, a gas range, and updated essential systems. Kailua's iconic beaches, hikes, shopping & amenities are just minutes away. **Sale Conditions:** None **Schools:** , , * [Request Showing](#), [Photos](#), [History](#), [Maps](#), [Deed](#), [Watch List](#), [Tax Info](#)





Address	Price	Bd & Bth	Living / Avg.	Land Avg.	DOM
340 Ilimano Street	\$2,190,000	4 & 2/0	2,020 \$1,084	10,000 \$219	22

Address	Tax Maint. Ass.	Assessed Land	Assessed Building	Assessed Total	Ratio	Year & Remodeled
340 Ilimano Street	\$416 \$0 \$0	\$1,274,000	\$393,200	\$1,667,200	131%	1958 & 1975

[340 Ilimano Street](#) - MLS#: [202410661](#) - Your Kailua oasis awaits with this newly renovated home located on a prime street in Kalaheo Hillside. This transformative remodel evokes a mid-century modern and Japanese zen garden aesthetic, utilizing the finest materials with mindful attention to detail. Dramatic open living spaces present high ceilings and oversized windows, a sun-drenched habitat connected to a tranquil lanai, and a shimmering custom pool. The generous interior flows through the kitchen, where you'll cook and converse around the huge prep + dining island complimented by a new appliance suite. Ample square footage expands across 4 bedrooms, 2 luxurious baths, and a thoughtful corridor, seamlessly merging the spaces together. Host dinner parties on the lanais, play in the grassy yard, and entertain in one of the inviting nooks throughout the outdoor space. Use the ground-level suite as your yoga room or versatile flex space for an office, gym, or creative studio, complete with indoor/outdoor access. Other modern luxuries include newly installed split system air conditioning, owned solar power, a gas range, and updated essential systems. Kailua's iconic beaches, hikes, shopping & amenities are just minutes away. **Region:** Kailua **Neighborhood:** Kalaheo Hillside **Condition:** Excellent **Parking:** 3 Car+, Carport, Driveway **Total Parking:** 4 **View:** Mountain, Sunrise **Frontage:** Other **Pool:** In Ground **Zoning:** 03 - R10 - Residential District **Sale Conditions:** None **Schools:** , , * [Request Showing](#), [Photos](#), [History](#), [Maps](#), [Deed](#), [Watch List](#), [Tax Info](#)

DOM = Days on Market