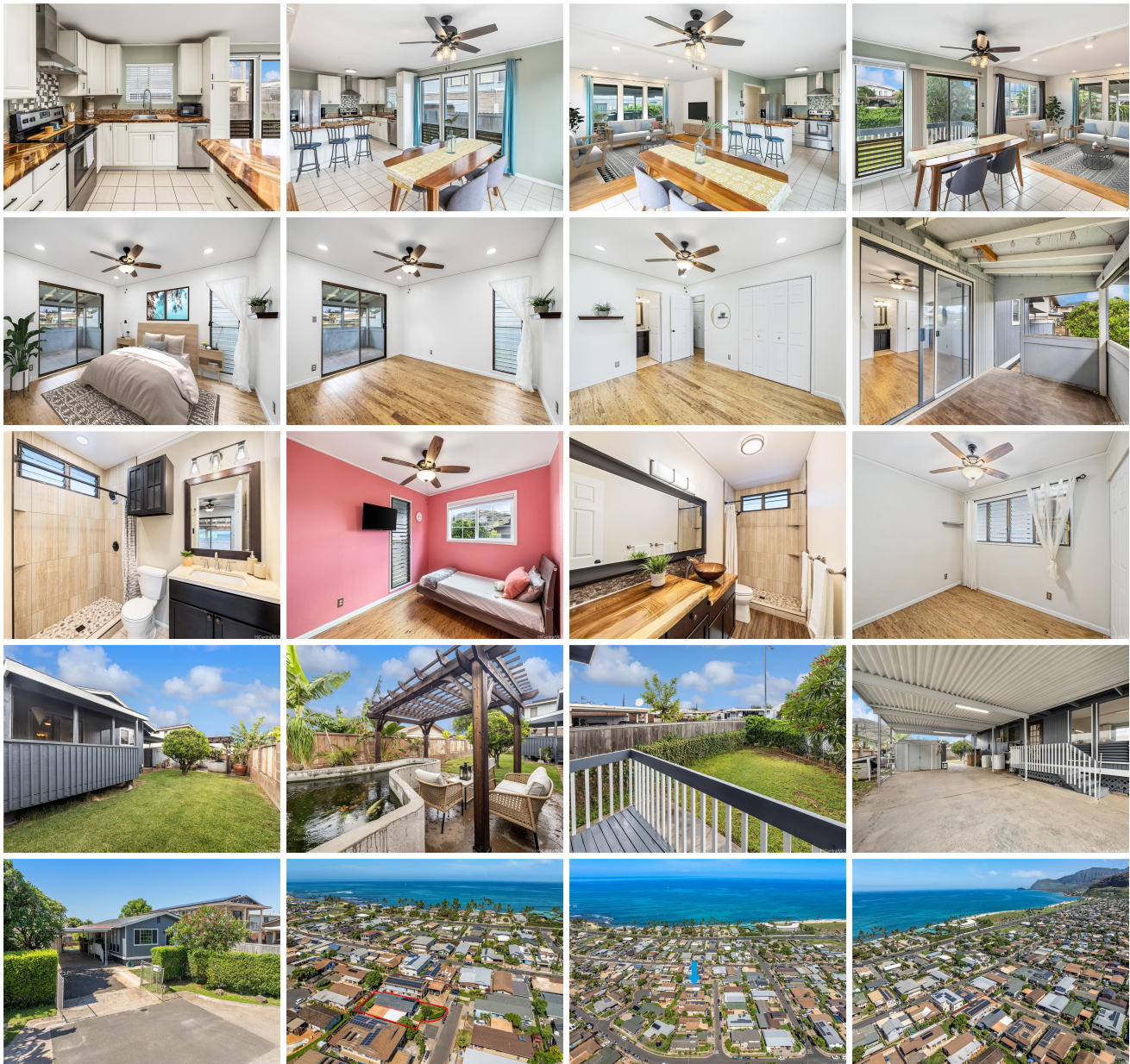


87-165 Manuliilii Place, Waianae 96792 * \$699,000 * Originally \$729,000

| | | |
|---|---|--------------------------------|
| Beds: 3 | MLS#: 202410665, FS | Year Built: 1973 |
| Bath: 2/0 | Status: Active Under Contract | Remodeled: 2024 |
| Living Sq. Ft.: 1,200 | List Date & DOM: 05-16-2024 & 49 | Total Parking: 4 |
| Land Sq. Ft.: 5,293 | Condition: Above Average | Assessed Value |
| Lanai Sq. Ft.: 0 | Frontage: | Building: \$137,400 |
| Sq. Ft. Other: 0 | Tax/Year: \$144/2024 | Land: \$484,800 |
| Total Sq. Ft. 1,200 | Neighborhood: Mali | Total: \$622,200 |
| Maint./Assoc. \$0 / \$0 | Flood Zone : Zone X - Tool | Stories / CPR: One / No |
| Parking: 3 Car+, Carport | Frontage: | |
| Zoning : 05 - R-5 Residential District | View: Mountain | |

Public Remarks: Welcome to your coastal retreat two blocks away from the ocean that's nestled in a cul-de-sac on a side street. This single-level home provides an open-concept layout with renovated kitchen and baths featuring modern finishes. Enjoy the warmth of eucalyptus hardwood floors in the living room as natural light enters the space. Embrace the vision of outdoor spaces in the front & back yard with capability to expand a deck or covered patio. Relax by the soothing koi pond or create a self-sustaining garden equipped for aquaponics. New roof replaced in 2019 and fresh painted exterior. Park with ease in the oversized carport, providing ample space for vehicles, storage or outdoor gym. Located between picturesque beaches and the bustling city of Kapolei, this home offers the ultimate blend of coastal living and convenience. **Sale Conditions:** None **Schools:** , , * [Request Showing](#), [Photos](#), [History](#), [Maps](#), [Deed](#), [Watch List](#), [Tax Info](#)



| Address | Price | Bd & Bth | Living / Avg. | Land Avg. | DOM |
|---------|-------|----------|---------------|-------------|-----|
|---------|-------|----------|---------------|-------------|-----|

| | | | | | |
|---|------------------|---------|---------------|---------------|----|
| 87-165 Manuliilii Place | \$699,000 | 3 & 2/0 | 1,200 \$583 | 5,293 \$132 | 49 |
|---|------------------|---------|---------------|---------------|----|

| Address | Tax Maint. Ass. | Assessed Land | Assessed Building | Assessed Total | Ratio | Year & Remodeled |
|---|---------------------|---------------|-------------------|----------------|-------|------------------|
| 87-165 Manuliilii Place | \$144 \$0 \$0 | \$484,800 | \$137,400 | \$622,200 | 112% | 1973 & 2024 |

[87-165 Manuliilii Place](#) - MLS#: [202410665](#) - Original price was \$729,000 - Welcome to your coastal retreat two blocks away from the ocean that's nestled in a cul-de-sac on a side street. This single-level home provides an open-concept layout with renovated kitchen and baths featuring modern finishes. Enjoy the warmth of eucalyptus hardwood floors in the living room as natural light enters the space. Embrace the vision of outdoor spaces in the front & back yard with capability to expand a deck or covered patio. Relax by the soothing koi pond or create a self-sustaining garden equipped for aquaponics. New roof replaced in 2019 and fresh painted exterior. Park with ease in the oversized carport, providing ample space for vehicles, storage or outdoor gym. Located between picturesque beaches and the bustling city of Kapolei, this home offers the ultimate blend of coastal living and convenience. **Region:** Leeward **Neighborhood:** Maili **Condition:** Above Average **Parking:** 3 Car+, Carport **Total Parking:** 4 **View:** Mountain **Frontage:** **Pool:** None **Zoning:** 05 - R-5 Residential District **Sale Conditions:** None **Schools:** , , * [Request Showing](#), [Photos](#), [History](#), [Maps](#), [Deed](#), [Watch List](#), [Tax Info](#)

DOM = Days on Market