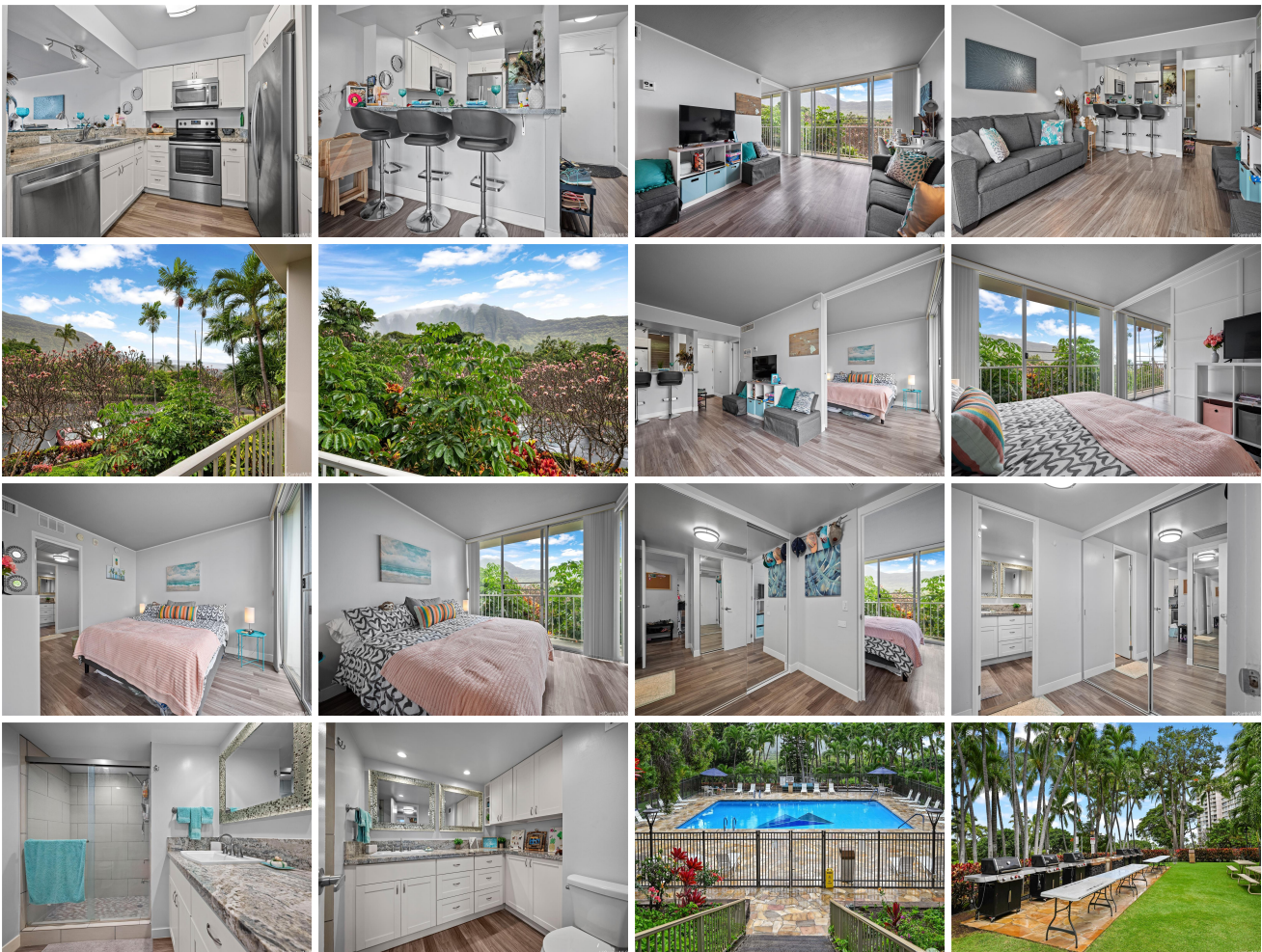


Makaha Valley Towers 84-680 Kili Drive Unit 306, Waianae 96792 * Makaha Valley Towers

*** \$230,000 * Originally \$235,000**

Beds: 1	MLS#: 202410686, FS	Year Built: 1970
Bath: 1/0	Status: Active	Remodeled: 2017
Living Sq. Ft.: 680	List Date & DOM: 05-10-2024 & 47	Total Parking: 1
Land Sq. Ft.: 612,759	Condition: Excellent, Above Average	Assessed Value
Lanai Sq. Ft.: 60	Frontage:	Building: \$198,300
Sq. Ft. Other: 0	Tax/Year: \$66/2023	Land: \$31,600
Total Sq. Ft. 740	Neighborhood: Makaha	Total: \$229,900
Maint./Assoc. \$1,065 / \$0	Flood Zone : Zone D - Tool	Stories / CPR: 15-20 / No
Parking: Open - 1	Frontage:	
Zoning : 12 - A-2 Medium Density Apartme	View: Coastline, Garden, Mountain, Ocean, Sunset	

Public Remarks: Welcome to your serene oasis at Makaha Valley Towers! Nestled amidst the lush greenery of Makaha Valley, this renovated 1-bdrm END unit offers a retreat from the hustle and bustle of city life. This unit is on the 3rd floor, at the end with neighbor only on one side which is great for privacy, and no need to use the elevators. Yet you are still high enough to have an ocean view! Stepping into the unit, you're greeted by an abundance of natural light through large windows, illuminating the open-concept living area. The cozy yet spacious layout connects the living, dining, and kitchen areas, creating an inviting atmosphere perfect for both relaxation and entertaining. The kitchen is equipped with modern appliances and ample cabinet space, making meal preparation a breeze. The bedroom serves as your personal sanctuary, boasting vinyl plank flooring, generous closet space, and large windows offering picturesque views of the surrounding landscape. Residents of Makaha Valley Towers enjoy access to a wealth of amenities, including a sparkling swimming pool, BBQ area, and meticulously maintained grounds. Plus, with world-class beaches, hiking trails, and golf courses just minutes away. **Sale Conditions:** None **Schools:** [Makaha](#), [Waianae](#), [Waianae](#) * [Request Showing](#), [Photos](#), [History](#), [Maps](#), [Deed](#), [Watch List](#), [Tax Info](#)





Address	Price	Bd & Bth	Living / Avg.	Land Avg.	Lanai	Occ.	FL	DOM
84-680 Kili Drive 306	\$230,000	1 & 1/0	680 \$338	612,759 \$0	60	42%	3	47

Address	Tax Maint. Ass.	Assessed Land	Assessed Building	Assessed Total	Ratio	Year & Remodeled
84-680 Kili Drive 306	\$66 \$1,065 \$0	\$31,600	\$198,300	\$229,900	100%	1970 & 2017

[84-680 Kili Drive 306](#) - MLS#: [202410686](#) - Original price was \$235,000 - Welcome to your serene oasis at Makaha Valley Towers! Nestled amidst the lush greenery of Makaha Valley, this renovated 1-bdrm END unit offers a retreat from the hustle and bustle of city life. This unit is on the 3rd floor, at the end with neighbor only on one side which is great for privacy, and no need to use the elevators. Yet you are still high enough to have an ocean view! Stepping into the unit, you're greeted by an abundance of natural light through large windows, illuminating the open-concept living area. The cozy yet spacious layout connects the living, dining, and kitchen areas, creating an inviting atmosphere perfect for both relaxation and entertaining. The kitchen is equipped with modern appliances and ample cabinet space, making meal preparation a breeze. The bedroom serves as your personal sanctuary, boasting vinyl plank flooring, generous closet space, and large windows offering picturesque views of the surrounding landscape. Residents of Makaha Valley Towers enjoy access to a wealth of amenities, including a sparkling swimming pool, BBQ area, and meticulously maintained grounds. Plus, with world-class beaches, hiking trails, and golf courses just minutes away. **Region:** Leeward **Neighborhood:** Makaha **Condition:** Excellent, Above Average **Parking:** Open - 1 **Total Parking:** 1 **View:** Coastline, Garden, Mountain, Ocean, Sunset **Frontage:** **Pool:** **Zoning:** 12 - A-2 Medium Density Apartme **Sale Conditions:** None **Schools:** [Makaha](#), [Waianae](#), [Waianae](#) * [Request Showing](#), [Photos](#), [History](#), [Maps](#), [Deed](#), [Watch List](#), [Tax Info](#)

DOM = Days on Market, Occ. = Occupancy, FL = Floor Number