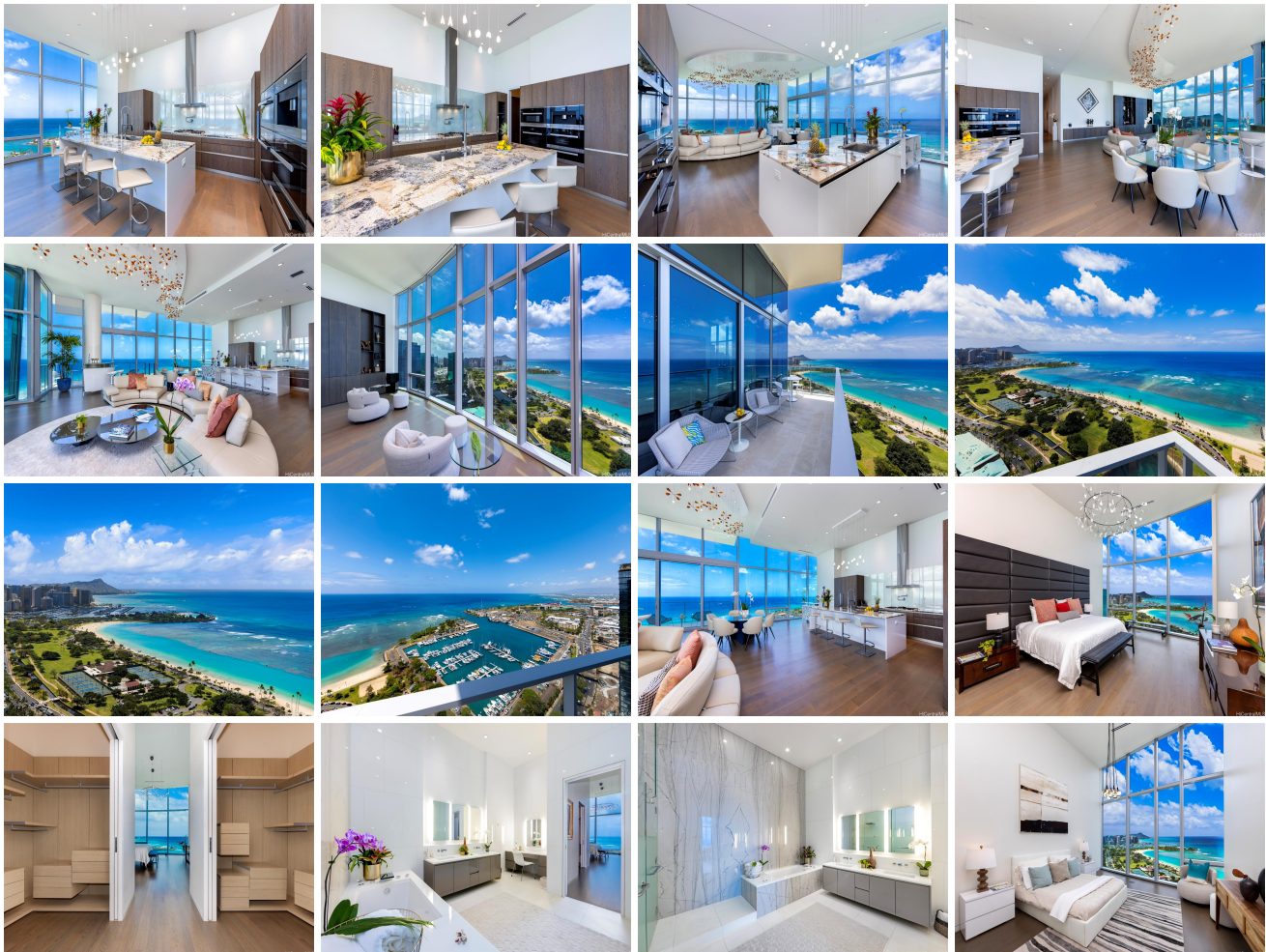


Waiea - 1118 Ala Moana 1118 Ala Moana Boulevard Unit 3400, Honolulu 96814 * Waiea - 1118 Ala Moana * \$19,000,000

Beds: 4	MLS#: 202410694, FS	Year Built: 2016
Bath: 4/1	Status: Active	Remodeled:
Living Sq. Ft.: 4,192	List Date & DOM: 05-07-2024 & 54	Total Parking: 3
Land Sq. Ft.: 0	Condition: Excellent	Assessed Value
Lanai Sq. Ft.: 154	Frontage: Other	Building: \$8,905,700
Sq. Ft. Other: 0	Tax/Year: \$1,404/2024	Land: \$230,000
Total Sq. Ft. 4,346	Neighborhood: Kakaako	Total: \$9,135,700
Maint./Assoc. \$5,583 / \$0	Flood Zone : Zone AE - Tool	Stories / CPR: 21+ / No
Parking: Assigned, Covered - 3+, Garage, Guest, Secured Entry	Frontage: Other	
Zoning : Kak - Kakaako Community Development Project	View: City, Coastline, Diamond Head, Ocean, Sunset	

Public Remarks: Beyond extraordinary: A once-in-a-lifetime opportunity to acquire a Penthouse of unparalleled distinction. Available for the first time, Waiea Penthouse #3400 delivers an exceptional lifestyle of luxury in the heart of Honolulu. Upon entering through a private foyer, soaring 13.5-foot ceilings greet you, setting the stage for a sprawling 4,192-square-foot, 4-bedroom + den, 4.5-bathroom floor plan. Panoramic views of Diamond Head, Magic Island, Ocean, coastlines, verdant parks, marinas & captivating sunrises unfold throughout the primary living spaces, the 154 sq.ft. lanai, & from each bedroom. High-end finishes elevate each room, from the Chef's kitchen clad in Snaidero cabinetry, Miele appliances, & marble countertops, to bespoke-art lighting & built-ins, to the primary suite's ultra-luxe appointments including a double walk-in closet, double vanity, deep soaking tub, & walk-in shower. Waiea stands as the Flagship luxury residence in award-winning Ward Village. Enjoy on-site resort amenities, explore nearby boutique shops, cafes, & restaurants, or enjoy stretching sandy beaches & water activities directly across the street. A legacy property awaits its next chapter at Waiea #3400. **Sale Conditions:** None
Schools: [Kaahumanu](#), [Keelikolani](#), [Mckinley](#) * [Request Showing](#), [Photos](#), [History](#), [Maps](#), [Deed](#), [Watch List](#), [Tax Info](#)





Address	Price	Bd & Bth	Living / Avg.	Land Avg.	Lanai	Occ.	FL	DOM
1118 Ala Moana Boulevard 3400	\$19,000,000	4 & 4/1	4,192 \$4,532	0 \$inf	154	35%	34	54

Address	Tax Maint. Ass.	Assessed Land	Assessed Building	Assessed Total	Ratio	Year & Remodeled
1118 Ala Moana Boulevard 3400	\$1,404 \$5,583 \$0	\$230,000	\$8,905,700	\$9,135,700	208%	2016 & NA

[1118 Ala Moana Boulevard 3400](#) - MLS#: [202410694](#) - Beyond extraordinary: A once-in-a-lifetime opportunity to acquire a Penthouse of unparalleled distinction. Available for the first time, Waiea Penthouse #3400 delivers an exceptional lifestyle of luxury in the heart of Honolulu. Upon entering through a private foyer, soaring 13.5-foot ceilings greet you, setting the stage for a sprawling 4,192-square-foot, 4-bedroom + den, 4.5-bathroom floor plan. Panoramic views of Diamond Head, Magic Island, Ocean, coastlines, verdant parks, marinas & captivating sunrises unfold throughout the primary living spaces, the 154 sq.ft. lanai, & from each bedroom. High-end finishes elevate each room, from the Chef's kitchen clad in Snaidero cabinetry, Miele appliances, & marble countertops, to bespoke-art lighting & built-ins, to the primary suite's ultra-luxe appointments including a double walk-in closet, double vanity, deep soaking tub, & walk-in shower. Waiea stands as the Flagship luxury residence in award-winning Ward Village. Enjoy on-site resort amenities, explore nearby boutique shops, cafes, & restaurants, or enjoy stretching sandy beaches & water activities directly across the street. A legacy property awaits its next chapter at Waiea #3400. **Region:** Metro **Neighborhood:** Kakaako **Condition:** Excellent **Parking:** Assigned, Covered - 3+, Garage, Guest, Secured Entry **Total Parking:** 3 **View:** City, Coastline, Diamond Head, Ocean, Sunset **Frontage:** Other **Pool:** Zoning: Kak - Kakaako Community Development Project **Sale Conditions:** None **Schools:** [Kaahumanu](#), [Keelikolani](#), [Mckinley](#) * [Request Showing](#), [Photos](#), [History](#), [Maps](#), [Deed](#), [Watch List](#), [Tax Info](#)

DOM = Days on Market, Occ. = Occupancy, FL = Floor Number