

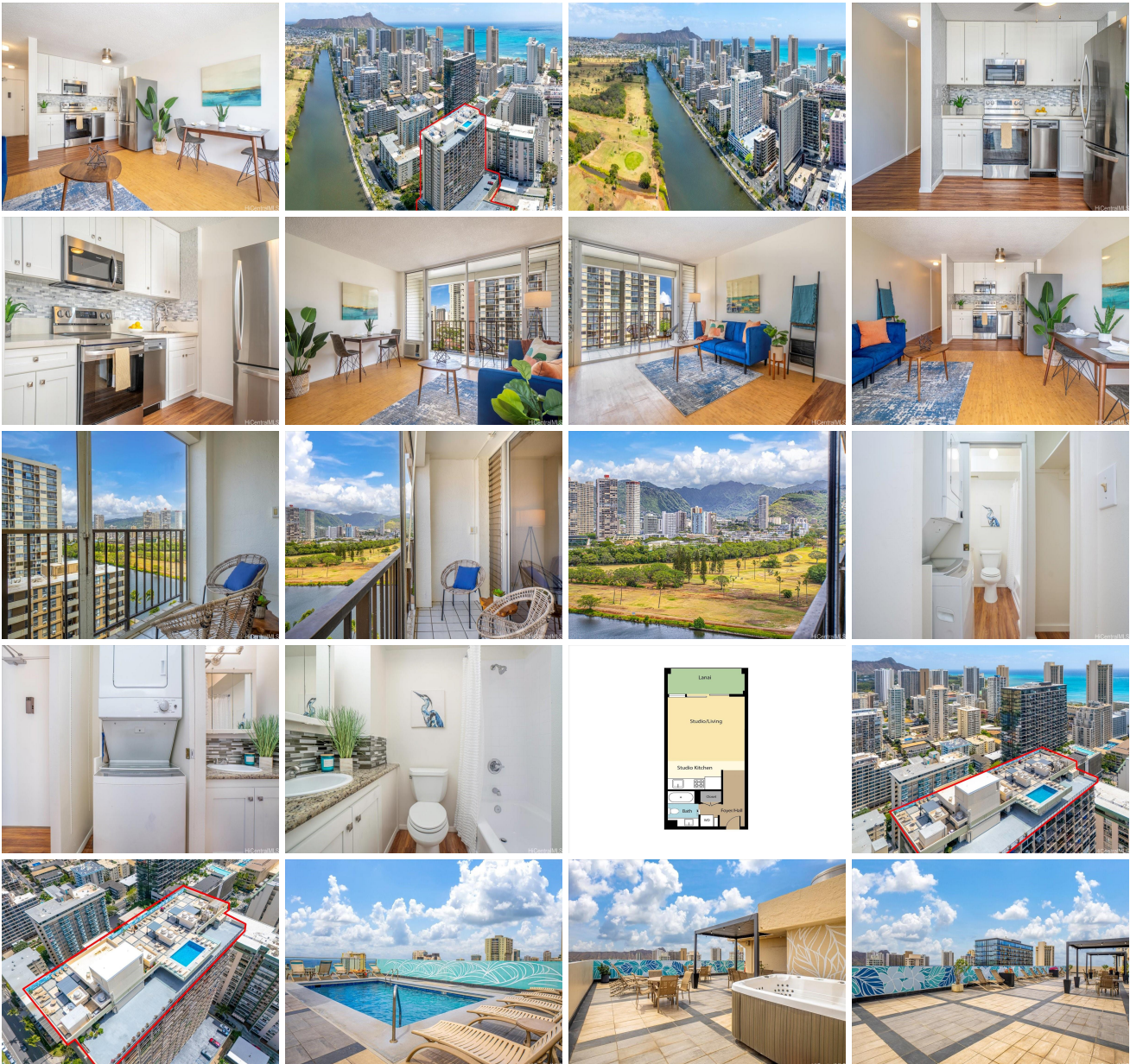
Fairway Villa 2345 Ala Wai Boulevard Unit 1610, Honolulu 96815 * \$328,000 * Originally \$348,000

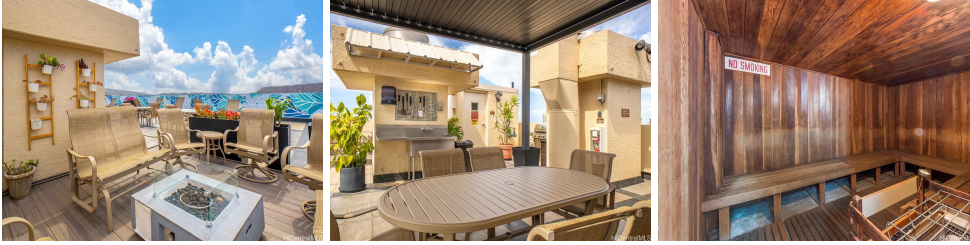
Beds: 0 Bath: 1/0 Living Sq. Ft.: 364 Land Sq. Ft.: 0 Lanai Sq. Ft.: 77 Sq. Ft. Other: 0 Total Sq. Ft. 441 Maint./Assoc. \$581 / \$0 Parking: Assigned, Covered - 1, Guest, Secured Entry	MLS#: 202411009, FS Status: Active List Date & DOM: 05-13-2024 & 64 Condition: Above Average Frontage: Tax/Year: \$85/2024 Neighborhood: Waikiki Flood Zone: Zone AE - Tool	Year Built: 1974 Remodeled: Total Parking: 1 Assessed Value Building: \$317,200 Land: \$28,700 Total: \$345,900 Stories / CPR: 21+ / No
--	---	--

Zoning: X2 - Apartment Precinct

View: City, Golf Course, Marina/Canal, Mountain

Public Remarks: NEW PRICE! This upgraded studio condo features a full kitchen, washer/dryer and a parking stall in the heart of Waikiki. Comfortable space for urban living and an efficient floor plan with an open lanai to relax and enjoy the golf course, canal, mountain and the brilliant colors of city light views. Great improvements include fresh paint, upgraded appliances, kitchen counter and cabinets, reglazed tub & shower wall. Fairway Villa is a secured residential high-rise paired with its reputation as one of the best low key condo bldg with short distances to the essential of the world's famous resort Waikiki location. Fun in sun to the recently improved roof top pool deck, BBQ cabanas, soak in the hot tub and/or sweat it out in the sauna; don't forget to enjoy the scenic surrounding views of ocean, city, Ala Wai canal, golf course, mountain range and valley. Maintenance fee includes cable TV, (hot) water, & sewer utilities. VA approved bldg. **Sale Conditions: None Schools: Jefferson, Washington, Kaimuki** * [Request Showing](#), [Photos](#), [History](#), [Maps](#), [Deed](#), [Watch List](#), [Tax Info](#)





Address	Price	Bd & Bth	Living / Avg.	Land Avg.	DOM
2345 Ala Wai Boulevard 1610	\$328,000	0 & 1/0	364 \$901	0 \$inf	64

Address	Tax Maint. Ass.	Assessed Land	Assessed Building	Assessed Total	Ratio	Year & Remodeled
2345 Ala Wai Boulevard 1610	\$85 \$581 \$0	\$28,700	\$317,200	\$345,900	95%	1974 & NA

[2345 Ala Wai Boulevard 1610](#) - MLS#: [202411009](#) - Original price was \$348,000 - NEW PRICE! This upgraded studio condo features a full kitchen, washer/dryer and a parking stall in the heart of Waikiki. Comfortable space for urban living and an efficient floor plan with an open lanai to relax and enjoy the golf course, canal, mountain and the brilliant colors of city light views. Great improvements include fresh paint, upgraded appliances, kitchen counter and cabinets, reglazed tub & shower wall. Fairway Villa is a secured residential high-rise paired with its reputation as one of the best low key condo bldg with short distances to the essential of the world's famous resort Waikiki location. Fun in sun to the recently improved roof top pool deck, BBQ cabanas, soak in the hot tub and/or sweat it out in the sauna; don't forget to enjoy the scenic surrounding views of ocean, city, Ala Wai canal, golf course, mountain range and valley. Maintenance fee includes cable TV, (hot) water, & sewer utilities. VA approved bldg. **Region:** Metro **Neighborhood:** Waikiki **Condition:** Above Average **Parking:** Assigned, Covered - 1, Guest, Secured Entry **Total Parking:** 1 **View:** City, Golf Course, Marina/Canal, Mountain **Frontage:** **Pool:** **Zoning:** X2 - Apartment Precinct **Sale Conditions:** None **Schools:** [Jefferson](#), [Washington](#), [Kaimuki](#) * [Request Showing](#), [Photos](#), [History](#), [Maps](#), [Deed](#), [Watch List](#), [Tax Info](#)

DOM = Days on Market