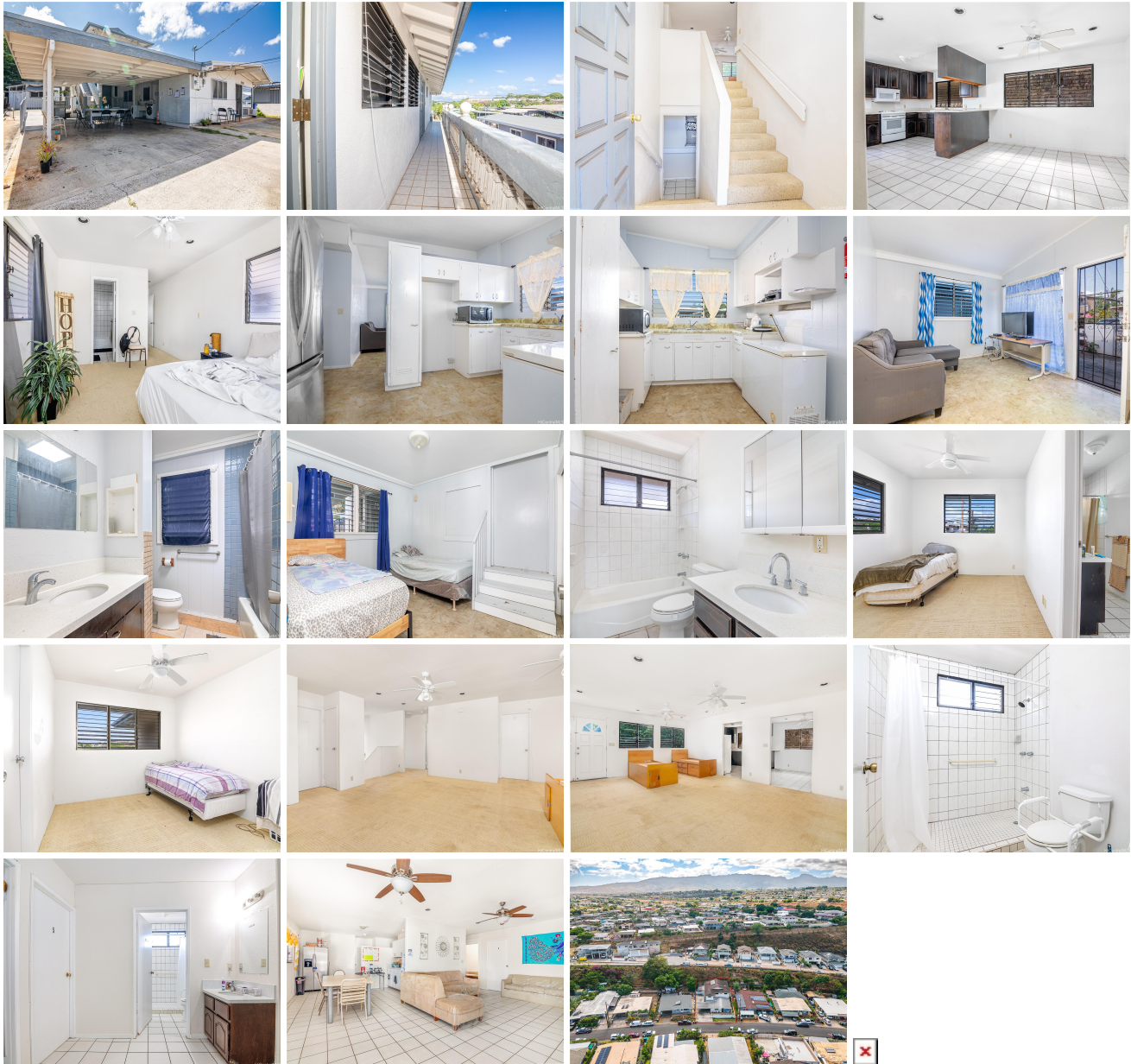


**94-488 Pilimai Street, Waipahu 96797 \* \$2,500,000**

|   |   |                                |
|---|---|--------------------------------|
| Beds: <b>11</b>   | MLS#: <b>202411015, FS</b>                        | Year Built: <b>1963</b>        |
| Bath: <b>7/0</b>  | Status: <b>Active</b>                             | Remodeled: <b>1985</b>         |
| Living Sq. Ft.: <b>4,458</b>                                  | List Date & DOM: <b>05-10-2024 &amp; 68</b>       | Total Parking: <b>5</b>        |
| Land Sq. Ft.: <b>7,468</b>                                    | Condition: <b>Average</b>                         | <a href="#">Assessed Value</a> |
| Lanai Sq. Ft.: <b>0</b>                                       | Frontage:   | Building: <b>\$589,700</b>     |
| Sq. Ft. Other: <b>0</b>                                       | Tax/Year: <b>\$112,917/2023</b>                   | Land: <b>\$756,300</b>         |
| Total Sq. Ft. <b>4,458</b>                                    | Neighborhood: <b>Waipahu Gardens</b>              | Total: <b>\$1,355,000</b>      |
| Maint./Assoc. <b>\$0 / \$0</b>                                | <a href="#">Flood Zone</a> : <b>Zone D - Tool</b> | Stories / CPR: <b>Two / No</b> |
| Parking: <b>3 Car+, Carport, Street</b>                       | Frontage:   |                                |
| <a href="#">Zoning</a> : <b>05 - R-5 Residential District</b> | View: <b>None</b>                                 |                                |

**Public Remarks:** Well maintained property featuring 11 Bedrooms & 7 Bathrooms with ample parking—a turnkey solution for your assisted care home, group home, half way house, or rehabilitation investment. Previously operated as a care facility for elderly or disabled veterans, this property is purpose-built to meet Assisted Living Facility regulations, ensuring seamless operations and compliance. Ideal for seasoned care home providers seeking expansion or investors entering the assisted living sector, this property offers a fantastic investment opportunity. Its layout and amenities are designed to facilitate multi-generational living arrangements, further expanding its appeal and potential revenue streams. To schedule a viewing or discuss investment details, please contact Tory at (808)223-9408 or Sarah at (808)226-5028. Kindly refrain from visiting the property without a scheduled appointment. **Sale Conditions:** Bankruptcy **Schools:** , , \* [Request Showing](#), [Photos](#), [History](#), [Maps](#), [Deed](#), [Watch List](#), [Tax Info](#)



| Address | Price | Bd & Bth | Living / Avg. | Land   Avg. | DOM |
|---------|-------|----------|---------------|-------------|-----|
|---------|-------|----------|---------------|-------------|-----|

|                                       |                             |          |               |               |    |
|---------------------------------------|-----------------------------|----------|---------------|---------------|----|
| <a href="#">94-488 Pilimai Street</a> | <a href="#">\$2,500,000</a> | 11 & 7/0 | 4,458   \$561 | 7,468   \$335 | 68 |
|---------------------------------------|-----------------------------|----------|---------------|---------------|----|

| Address                               | Tax   Maint.   Ass.   | Assessed Land | Assessed Building | Assessed Total | Ratio | Year & Remodeled |
|---------------------------------------|-----------------------|---------------|-------------------|----------------|-------|------------------|
| <a href="#">94-488 Pilimai Street</a> | \$112,917   \$0   \$0 | \$756,300     | \$589,700         | \$1,355,000    | 185%  | 1963 & 1985      |

[94-488 Pilimai Street](#) - MLS#: [202411015](#) - Well maintained property featuring 11 Bedrooms & 7 Bathrooms with ample parking—a turnkey solution for your assisted care home, group home, half way house, or rehabilitation investment. Previously operated as a care facility for elderly or disabled veterans, this property is purpose-built to meet Assisted Living Facility regulations, ensuring seamless operations and compliance. Ideal for seasoned care home providers seeking expansion or investors entering the assisted living sector, this property offers a fantastic investment opportunity. Its layout and amenities are designed to facilitate multi-generational living arrangements, further expanding its appeal and potential revenue streams. To schedule a viewing or discuss investment details, please contact Tory at (808)223-9408 or Sarah at (808)226-5028. Kindly refrain from visiting the property without a scheduled appointment. **Region:** Waipahu **Neighborhood:** Waipahu Gardens **Condition:** Average **Parking:** 3 Car+, Carport, Street **Total Parking:** 5 **View:** None **Frontage:** **Pool:** None **Zoning:** 05 - R-5 Residential District **Sale Conditions:** Bankruptcy **Schools:** , , \* [Request Showing](#), [Photos](#), [History](#), [Maps](#), [Deed](#), [Watch List](#), [Tax Info](#)

DOM = Days on Market