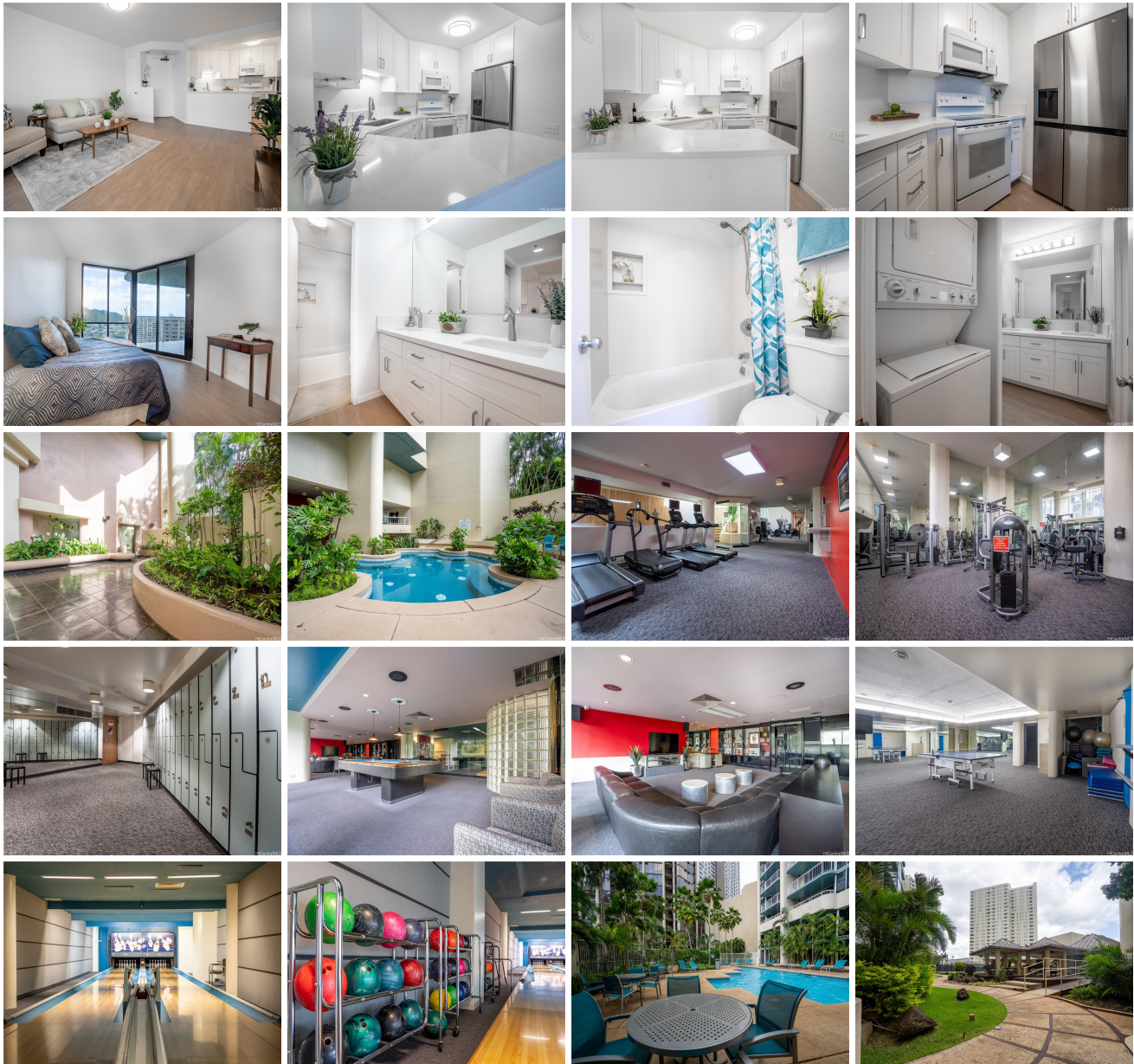


Honolulu Park Place 1212 Nuuanu Avenue Unit 3410, Honolulu 96817 * \$519,000

Beds: 1	MLS#: <u>202411062</u>, FS	Year Built: 1989
Bath: 1/0	Status: Active	Remodeled: 2024
Living Sq. Ft.: 612	List Date & DOM: 05-16-2024 & 37	Total Parking: 1
Land Sq. Ft.: 72,702	Condition: Excellent	Assessed Value
Lanai Sq. Ft.: 154	Frontage: Other	Building: \$513,700
Sq. Ft. Other: 0	Tax/Year: \$161/2024	Land: \$35,700
Total Sq. Ft. 766	Neighborhood: Chinatown	Total: \$549,400
Maint./Assoc. \$798 / \$0	Flood Zone : Zone X - Tool	Stories / CPR: 21+ / No
Parking: Covered - 1, Guest	Frontage: Other	
Zoning : 34 - BMX-4 Central Business Mix	View: City, Mountain	

Public Remarks: Urban Oasis to live, work and play. Conveniently located in Metro Honolulu, this beautifully remodeled 1 bed, 1 bath, 1 parking unit enjoys cooling breezes with lovely city, mountain and iconic Punchbowl views from the large lanai. Relax in the comfort of your remodeled home with all new kitchen cabinets, quartz counters, refrigerator, range oven, microwave hood, new bathroom double sink vanity with quartz counter, luxury vinyl flooring, newer washer and dryer in unit, new painting, and lighting. Enjoy the fabulous amenities on property including: tropical gardens meandering through koi ponds, pagodas with BBQ, heated pool, whirlpool, health club, gym, locker rooms, racquet ball, tennis, basketball courts, golf cage, bowling alley, car wash area or dine at the on-property café. Enjoy proximity to downtown, HPU, international dining and cultural experiences offering endless entertainment possibilities. Did we mention that this home has central air, interior sprinkler system, 24 hour security, an on-site manager, guest parking and is pet-friendly! **Sale Conditions:** None **Schools:** , * [Request Showing](#), [Photos](#), [History](#), [Maps](#), [Deed](#), [Watch List](#), [Tax Info](#)





Address	Price	Bd & Bth	Living / Avg.	Land Avg.	DOM
1212 Nuuanu Avenue 3410	\$519,000	1 & 1/0	612 \$848	72,702 \$7	37

Address	Tax Maint. Ass.	Assessed Land	Assessed Building	Assessed Total	Ratio	Year & Remodeled
1212 Nuuanu Avenue 3410	\$161 \$798 \$0	\$35,700	\$513,700	\$549,400	94%	1989 & 2024

[1212 Nuuanu Avenue 3410](#) - MLS#: [202411062](#) - Urban Oasis to live, work and play. Conveniently located in Metro Honolulu, this beautifully remodeled 1 bed, 1 bath, 1 parking unit enjoys cooling breezes with lovely city, mountain and iconic Punchbowl views from the large lanai. Relax in the comfort of your remodeled home with all new kitchen cabinets, quartz counters, refrigerator, range oven, microwave hood, new bathroom double sink vanity with quartz counter, luxury vinyl flooring, newer washer and dryer in unit, new painting, and lighting. Enjoy the fabulous amenities on property including: tropical gardens meandering through koi ponds, pagodas with BBQ, heated pool, whirlpool, health club, gym, locker rooms, racquet ball, tennis, basketball courts, golf cage, bowling alley, car wash area or dine at the on-property café. Enjoy proximity to downtown, HPU, international dining and cultural experiences offering endless entertainment possibilities. Did we mention that this home has central air, interior sprinkler system, 24 hour security, an on-site manager, guest parking and is pet-friendly! **Region:** Metro **Neighborhood:** Chinatown **Condition:** Excellent **Parking:** Covered - 1, Guest **Total Parking:** 1 **View:** City, Mountain **Frontage:** Other **Pool:** **Zoning:** 34 - BMX-4 Central Business Mix **Sale Conditions:** None **Schools:** , , * [Request Showing](#), [Photos](#), [History](#), [Maps](#), [Deed](#), [Watch List](#), [Tax Info](#)

DOM = Days on Market