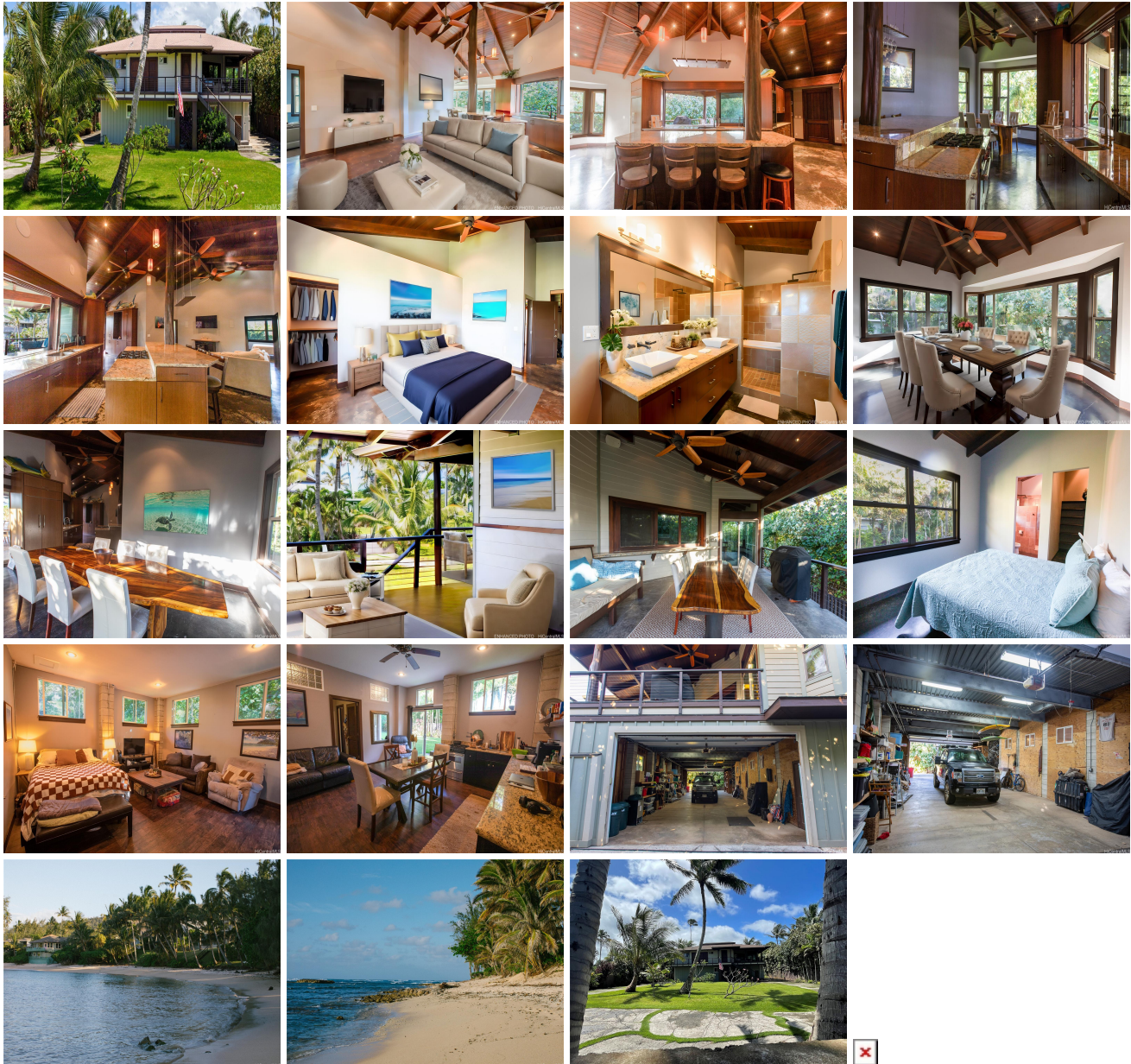


57-022 Pahipahialua Place, Kahuku 96731 * \$3,490,000 * Originally \$3,750,000

Beds: 4	MLS#: 202411071, FS	Year Built: 2012
Bath: 3/2	Status: Active	Remodeled:
Living Sq. Ft.: 2,110	List Date & DOM: 05-10-2024 & 67	Total Parking: 8
Land Sq. Ft.: 17,293	Condition: Excellent	Assessed Value
Lanai Sq. Ft.: 0	Frontage:	Building: \$900,100
Sq. Ft. Other: 0	Tax/Year: \$676/2024	Land: \$1,537,000
Total Sq. Ft. 2,110	Neighborhood: Kawela Bay	Total: \$2,317,100
Maint./Assoc. \$0 / \$200	Flood Zone : Zone V - Tool	Stories / CPR: Two / No
Parking: 3 Car+, Boat, Driveway, Garage	Frontage:	
Zoning : 05 - R-5 Residential District	View: Garden, Ocean	

Public Remarks: Situated on just under half an acre inside a gated and private community on Oahu's iconic North Shore, where landowners are have deeded access to Kawela Bay, this home offers a marvelous slice of Hawaii's most exclusive neighborhood and coastline. Please follow the link below to our Virtual tour... after watching our video, you will see that Kawela Bay is a magical place. Originally built in 2012 and meticulously maintained with a soft and contemporary yet rugged feel, this property is a turn-key delight for today's discerning buyer. Soaring ceilings, sliding pass-through windows and large wrap around lanais create a sensational open feeling and true blend of indoor and outdoor living. The main home is beautifully finished with black oak cabinets, stained concrete flooring, 3 full/1 half bathrooms and an enormous drive through garage. Downstairs you will find a 1/1 guest suite, your own climbing wall and a short walk brings you to a private surf break and horseback riding trails that lead to the Turtle Bay Stables. Kawela Bay offers a rare combination of neighborhood serenity and accessibility to Turtle Bay Resort, Haleiwa Harbor, shopping, fruit stands, Kahuku Hospital and more. **Sale Conditions:** None **Schools:** , , * [Request Showing](#), [Photos](#), [History](#), [Maps](#), [Deed](#), [Watch List](#), [Tax Info](#)



Address	Price	Bd & Bth	Living / Avg.	Land Avg.	DOM
57-022 Pahipahialua Place	\$3,490,000	4 & 3/2	2,110 \$1,654	17,293 \$202	67

Address	Tax Maint. Ass.	Assessed Land	Assessed Building	Assessed Total	Ratio	Year & Remodeled
57-022 Pahipahialua Place	\$676 \$0 \$200	\$1,537,000	\$900,100	\$2,317,100	151%	2012 & NA

[57-022 Pahipahialua Place](#) - MLS#: [202411071](#) - Original price was \$3,750,000 - Situated on just under half an acre inside a gated and private community on Oahu's iconic North Shore, where landowners are have deeded access to Kawela Bay, this home offers a marvelous slice of Hawaii's most exclusive neighborhood and coastline. Please follow the link below to our Virtual tour... after watching our video, you will see that Kawela Bay is a magical place. Originally built in 2012 and meticulously maintained with a soft and contemporary yet rugged feel, this property is a turn-key delight for today's discerning buyer. Soaring ceilings, sliding pass-through windows and large wrap around lanais create a sensational open feeling and true blend of indoor and outdoor living. The main home is beautifully finished with black oak cabinets, stained concrete flooring, 3 full/1 half bathrooms and an enormous drive through garage. Downstairs you will find a 1/1 guest suite, your own climbing wall and a short walk brings you to a private surf break and horseback riding trails that lead to the Turtle Bay Stables. Kawela Bay offers a rare combination of neighborhood serenity and accessibility to Turtle Bay Resort, Haleiwa Harbor, shopping, fruit stands, Kahuku Hospital and more. **Region:** North Shore **Neighborhood:** Kawela Bay **Condition:** Excellent **Parking:** 3 Car+, Boat, Driveway, Garage **Total Parking:** 8 **View:** Garden, Ocean **Frontage:** **Pool:** None **Zoning:** 05 - R-5 Residential District **Sale Conditions:** None **Schools:** , , * [Request Showing](#), [Photos](#), [History](#), [Maps](#), [Deed](#), [Watch List](#), [Tax Info](#)

DOM = Days on Market