

# **Executive Centre 1088 Bishop Street Unit 3706, Honolulu 96813 \* Executive Centre \***

**\$628,000**

Beds: **1**  
Bath: **1/0**  
Living Sq. Ft.: **798**  
Land Sq. Ft.: **0**  
Lanai Sq. Ft.: **0**  
Sq. Ft. Other: **0**  
Total Sq. Ft. **798**  
Maint./Assoc. **\$1,357 / \$0**

MLS#: **202411074, FS**  
Status: **Active**  
List Date & DOM: **05-13-2024 & 65**  
Condition: **Above Average**  
Frontage:  
Tax/Year: **\$450/2024**  
Neighborhood: **Downtown**  
**Flood Zone: Zone X - Tool**

Year Built: **1984**  
Remodeled: **2016**  
Total Parking: **1**  
[Assessed Value](#)  
Building: **\$375,900**  
Land: **\$48,800**  
Total: **\$424,700**  
Stories / CPR: **21+ / No**

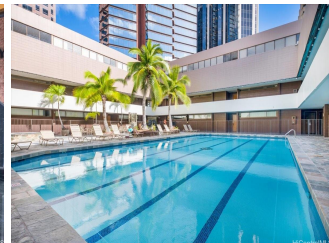
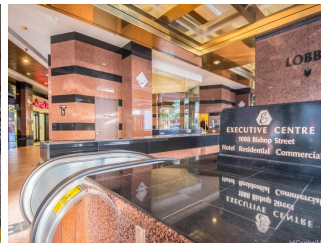
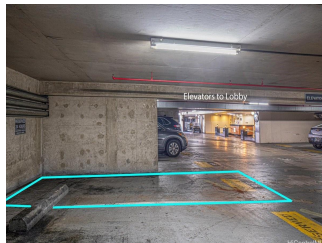
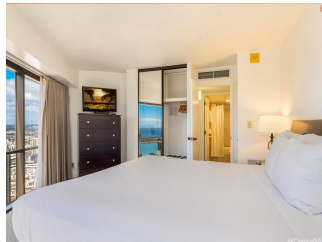
Parking: **Assigned, Covered - 1, Secured Entry**

Frontage:

**Zoning: 34 - BMX-4 Central Business Mix**

View: **City, Coastline, Ocean**

**Public Remarks:** THE ONLY LEGAL SHORT-TERM DAILY RENTAL CONDO-HOTEL in the heart of the downtown Honolulu district. This tower suite largest 1-bedroom/1-bath floorplan offers a separate foyer entrance, floor-to-ceiling glass windows, upgraded full kitchen and bath, washer/dryer, central AC, and comes fully furnished including 1 assigned covered parking stall. Enjoy the high floor views of the Honolulu harbor, coastline, ocean and the brilliant colors of city lights. Great flexible mix use as rental and/or enjoy as a vacation or primary home and/or simply as a office living suite. Executive Centre is a reputable mixed use condo-hotel/office building conveniently located in short distances to offices, Hawaii Pacific University, eateries, art galleries, night market festivals, historic Chinatown, medical facilities, shopping centers, bus-lines, freeway access & many more essentials of the Honolulu's Downtown district. Maintenance fee includes cable TV, internet, (hot) water, sewer, common area expenses and capital reserves. **Sale Conditions:** None **Schools:** [Royal](#), [Keelikolani](#), [Mckinley](#) \* [Request Showing, Photos, History, Maps, Deed, Watch List, Tax Info](#)





Address	Price	Bd & Bth	Living / Avg.	Land   Avg.	Lanai	Occ.	FL	DOM
<a href="#">1088 Bishop Street 3706</a>	<a href="#">\$628,000</a>	1 & 1/0	798   \$787	0   \$inf	0	30%	37	65

Address	Tax   Maint.   Ass.	Assessed Land	Assessed Building	Assessed Total	Ratio	Year & Remodeled
<a href="#">1088 Bishop Street 3706</a>	\$450   \$1,357   \$0	\$48,800	\$375,900	\$424,700	148%	1984 & 2016

[1088 Bishop Street 3706](#) - MLS#: [202411074](#) - THE ONLY LEGAL SHORT-TERM DAILY RENTAL CONDO-HOTEL in the heart of the downtown Honolulu district. This tower suite largest 1-bedroom/1-bath floorplan offers a separate foyer entrance, floor-to-ceiling glass windows, upgraded full kitchen and bath, washer/dryer, central AC, and comes fully furnished including 1 assigned covered parking stall. Enjoy the high floor views of the Honolulu harbor, coastline, ocean and the brilliant colors of city lights. Great flexible mix use as rental and/or enjoy as a vacation or primary home and/or simply as a office living suite. Executive Centre is a reputable mixed use condo-hotel/office building conveniently located in short distances to offices, Hawaii Pacific University, eateries, art galleries, night market festivals, historic Chinatown, medical facilities, shopping centers, bus-lines, freeway access & many more essentials of the Honolulu's Downtown district. Maintenance fee includes cable TV, internet, (hot) water, sewer, common area expenses and capital reserves. **Region:** Metro **Neighborhood:** Downtown **Condition:** Above Average **Parking:** Assigned, Covered - 1, Secured Entry **Total Parking:** 1 **View:** City, Coastline, Ocean **Frontage:** **Pool:** **Zoning:** 34 - BMX-4 Central Business Mix **Sale Conditions:** None **Schools:** [Royal, Keelikolani, Mckinley](#) \* [Request Showing](#), [Photos](#), [History](#), [Maps](#), [Deed](#), [Watch List](#), [Tax Info](#)

DOM = Days on Market, Occ. = Occupancy, FL = Floor Number